

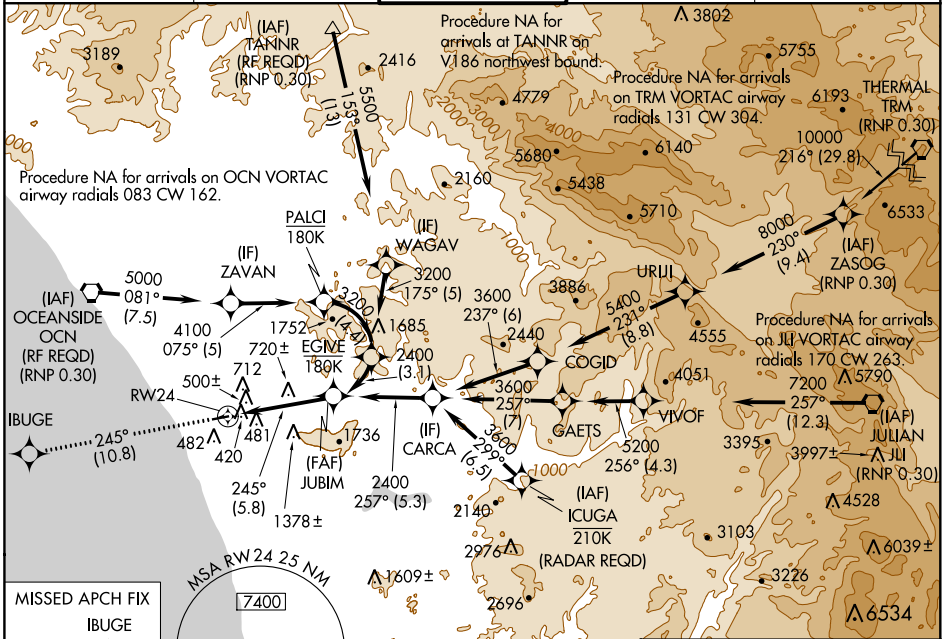
APP CRS 245°	Rwy Idg TDZE Apt Elev	4897 326 331
------------------------	-----------------------------	---

RNAV (RNP) Z RWY 24

MC CLELLAN-PALOMAR (CRQ)

<p>For uncompensated Baro-VNAV systems, procedure NA below 1°C (34°F) or above 54°C (130°F). For inoperative MALS/R, increase RNP 0.10 visibility to RVR 6000 all Cats, RNP 0.30 visibility to 1% all Cats. GPS required.</p>	<p>MALS/R</p>	<p>MISSED APPROACH: Climb to 2000 on track 245° to IBUGE and hold.</p>
---	---------------	--

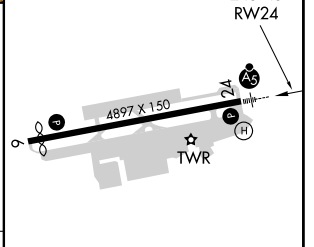
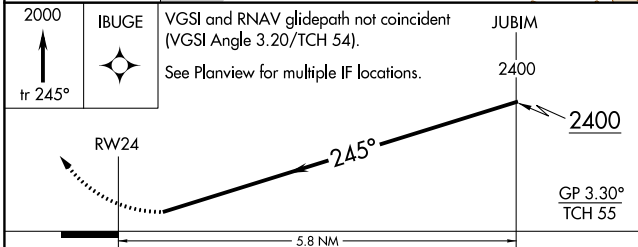
ATIS 120.15	SOCAL APP CON 127.3 323.0	PALOMAR TOWER* 118.6 (CTAF) 0 276.4	GND CON 121.8	CLNC DEL 134.85
-----------------------	-------------------------------------	---	-------------------------	---------------------------



SW-3, 25 FEB 2021 to 25 MAR 2021

SW-3, 25 FEB 2021 to 25 MAR 2021

ELEV 331	TDZE 326
----------	----------



CATEGORY	A	B	C	D
RNP 0.10 DA	810/50	484 (500-1)		NA
RNP 0.30 DA	931-1 $\frac{3}{8}$	605 (600-1 $\frac{3}{8}$)		NA

AUTHORIZATION REQUIRED

REIL Rwy 24	HIRL Rwy 6-24
-------------	---------------