

WAAS CH <b>61116</b> <b>W08A</b>	APP CRS <b>087°</b>	Rwy ldg <b>4400</b>
		TDZE <b>894</b>
		Apt Elev <b>894</b>

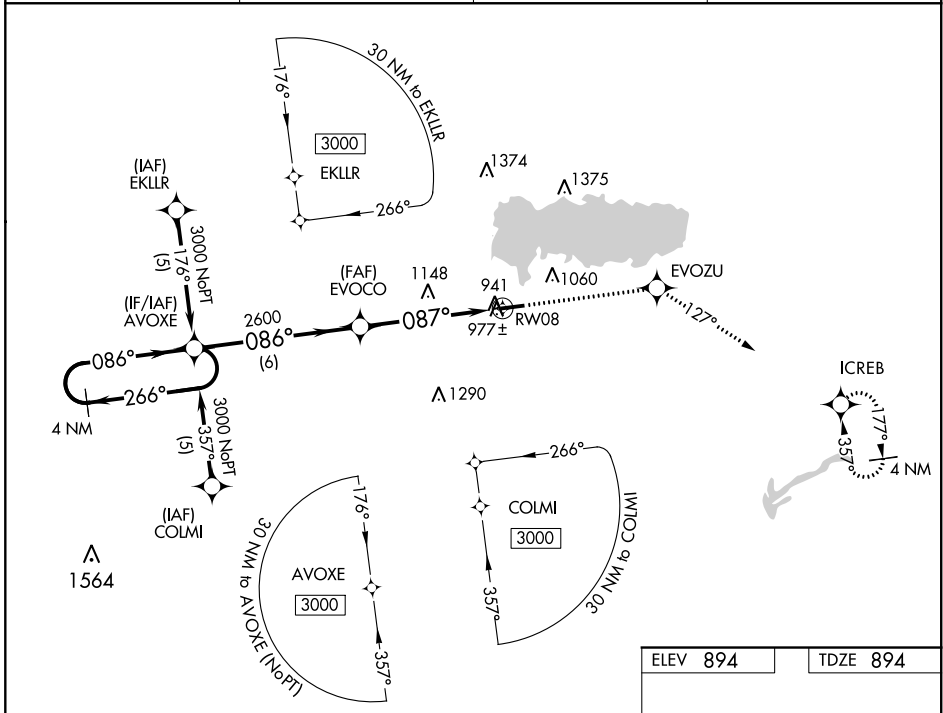
# RNAV (GPS) RWY 8

LAKEFIELD (CQA)

**⚠** DME/DME RNP-0.3 NA. Visibility reduction by helicopters NA. Baro-VNAV NA. Use Wapakoneta altimeter setting. When not received use James M. Cox Dayton Intl altimeter setting and increase all DA 73 feet and all MDA 80 feet; increase LPV Cats A/B/C visibility ¼ mile, LNAV/VNAV Cats A/B/C visibility ½ mile and LNAV and Circling Cat C visibility ¼ mile.

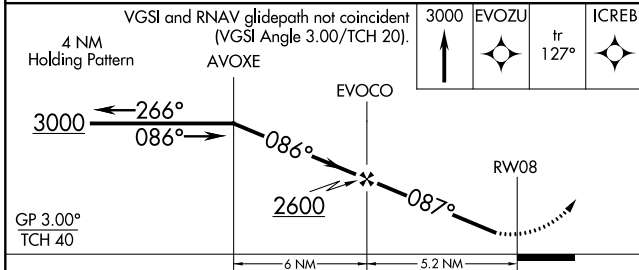
**⚠** NA MISSED APPROACH: Climb to 3000 direct EVOZU and via track 127° to ICREB and hold.

AXV AWOS-3-PT <b>128.325</b>	COLUMBUS APP CON <b>118.425 352.05</b>	UNICOM <b>122.8 (CTAF)</b>	<b>123.3</b> <b>Ⓜ</b>
---------------------------------	---	-------------------------------	-----------------------



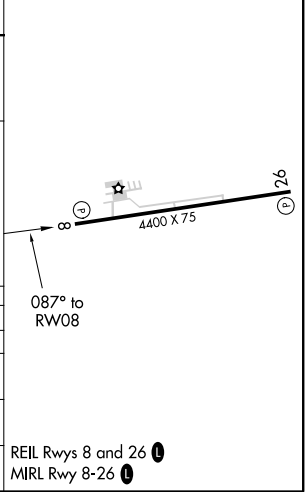
EC-2, 25 FEB 2021 to 25 MAR 2021

EC-2, 25 FEB 2021 to 25 MAR 2021



ELEV 894	TDZE 894
----------	----------

CATEGORY	A	B	C	D
LPV DA	1221-1¼	327 (400-1¼)		NA
LNAV/VNAV DA	1278-1¼	384 (400-1¼)		NA
LNAV MDA	1440-1	546 (600-1)	1440-1½ 546 (600-1½)	NA
CIRCLING	1440-1	546 (600-1)	1440-1½ 546 (600-1½)	NA



REIL Rwy 8 and 26 **Ⓜ**  
MIRL Rwy 8-26 **Ⓜ**