

OZARK SEVEN DEPARTURE

AL-5316 (FAA)

ST LOUIS DOWNTOWN (CPS)
CAHOKIA/ST. LOUIS, ILLINOIS

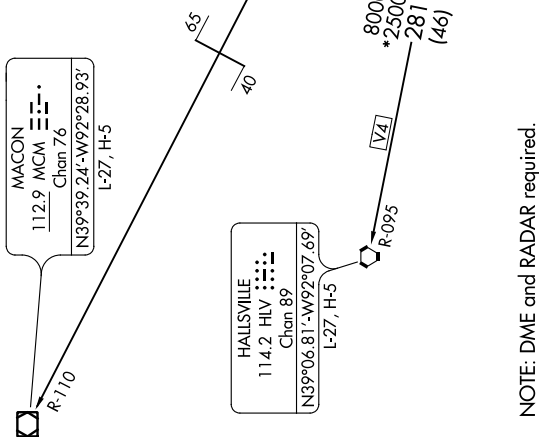
ATIS 121.45
 CLNC DEL 118.275
 121.8 (when tower closed)
 GND CON 121.8
 DOWNTOWN TOWER* 119.925 379.3
 ST LOUIS DEP CON 123.7 371.875

TOP ALTITUDE:
2500

MACON
 112.9 MCM
 Chan 76
 N39°39.24'-W92°28.93'
 L-27, H-5

HALLSVILLE
 114.2 HLV
 Chan 89
 N39°06.81'-W92°07.69'
 L-27, H-5

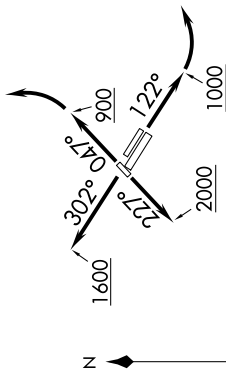
ST. LOUIS
 117.4 STL
 Chan 121
 N38°51.64'-W90°28.94'



NOTE: DME and RADAR required.

TAKEOFF MINIMUMS

- Rwys 12L/R, 23, 30R: Standard.
- Rwy 5: 200-1/4 or standard with minimum climb of 343' per NM to 700.
- Rwy 30L: 400-2 1/2 or standard with minimum climb of 220' per NM to 900, or alternatively, with standard takeoff minimums and a normal 200' per NM climb gradient, takeoff must occur no later than 2100' prior to DER.



NOTE: Chart not to scale.

(NARRATIVE ON FOLLOWING PAGE)

OZARK SEVEN DEPARTURE

CAHOKIA/ST. LOUIS, ILLINOIS
ST LOUIS DOWNTOWN (CPS)