

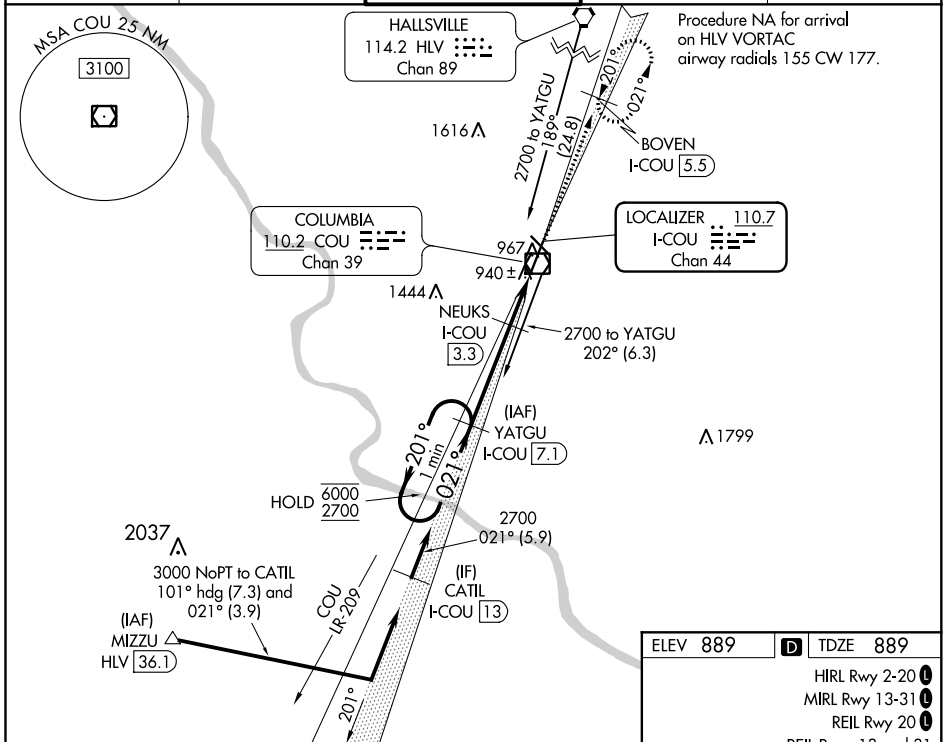
LOC/DME I-COU 110.7 Chan 44	APP CRS 021°	Rwy Idg 6501 TDZE 889 Apt Elev 889
---	------------------------	---

ILS or LOC RWY 2

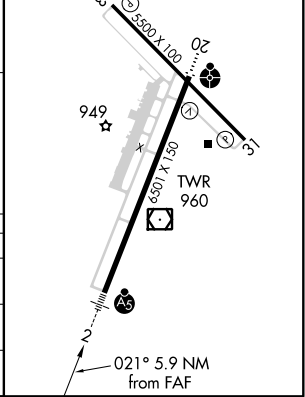
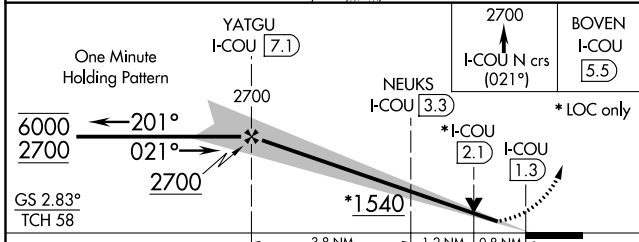
COLUMBIA RGNL (COU)

DME required.	MALSR 	MISSED APPROACH: Climb to 2700 on I-COU localizer north course (021°) to BOVEN/I-COU 5.5 DME and hold.
 Circling NA for Cat D west of Rwy 2 and 13. Circling Rwy 20 NA at night. For inop ALS, increase S-LOC 2 Cat C/D visibility to RVR 4500. #RVR 1800 authorized with use of FD or AP or HUD to DA.		

ATIS 128.45	MIZZU APP CON 124.375 353.7	COLUMBIA TOWER * 119.3 (CTAF) 363.25	GND CON 121.9	UNICOM 122.95
-----------------------	---------------------------------------	--	-------------------------	-------------------------



ELEV 889	TDZE 889
HIRL Rwy 2-20	
MIRL Rwy 13-31	
REIL Rwy 20	
REIL Rwy 13 and 31	



CATEGORY	A	B	C	D
S-ILS 2#		1089/24	200 (200-½)	
S-LOC 2		1200/24	311 (400-½)	
CIRCLING	1300-1 411 (500-1)	1340-1 451 (500-1)	1360-1½ 471 (500-1½)	1440-2 551 (600-2)

NC-3, 25 FEB 2021 to 25 MAR 2021

NC-3, 25 FEB 2021 to 25 MAR 2021