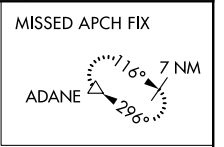
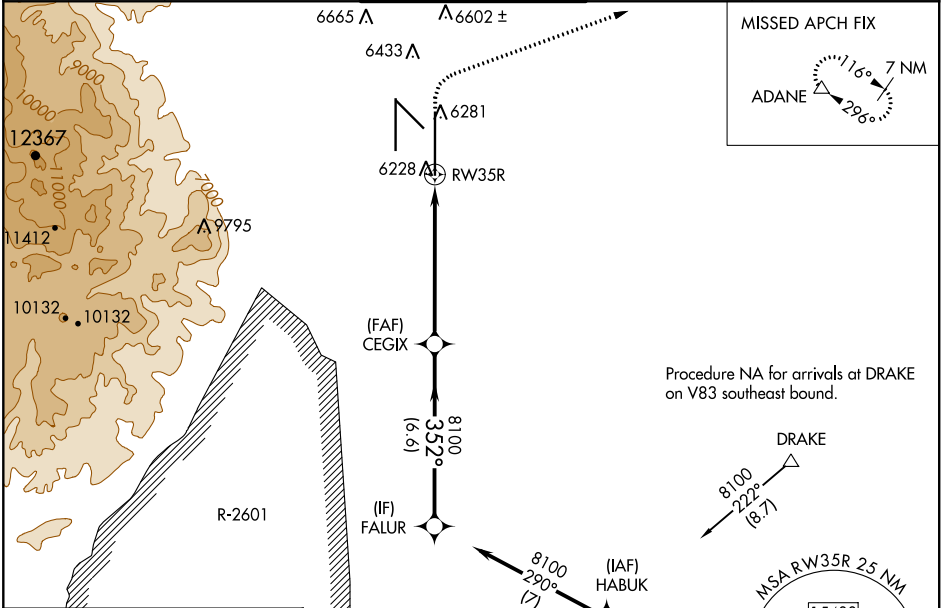


WAAS CH 53602 W35B	APP CRS 352°	Rwy Idg TDZE Apt Elev	13501 6118 6187
--	------------------------	-----------------------------	--

RNAV (GPS) Y RWY 35R

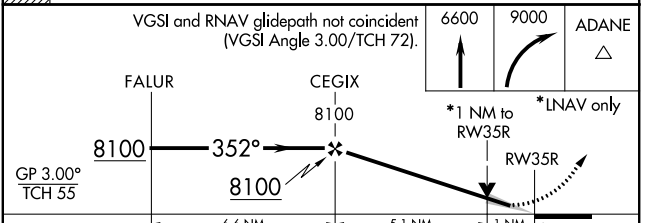
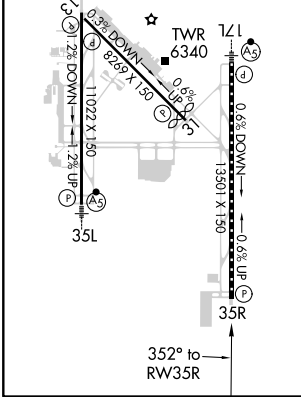
CITY OF COLORADO SPRINGS MUNI (COS)

<p>For uncompensated Baro-VNAV systems, LNAV/VNAV NA below -21°C (-5°F) or above 39°C (103°F). DME/DME RNP-0.3 NA. RADAR monitoring required when R-2601 in use.</p>	<p>MISSED APPROACH: Climb to 6600 then climbing right turn to 9000 direct ADANE and hold.</p>			
	<p>ATIS 125.0 254.3</p>	<p>SPRINGS APP CON 124.0 257.875</p>	<p>SPRINGS TOWER 119.9 360.6</p>	<p>GND CON 121.7 348.6</p>



Procedure NA for arrivals at DRAKE on V83 southeast bound.

ELEV 6187	D	TDZE 6118
MIRL Rwy 13-31		
HIRL Rwy 17R-35L and 17L-35R		
REIL Rwy 13, 17R, 31, and 35R		
TDZ/CL Rwy 17L and 35R		



CATEGORY	A	B	C	D
LPV DA		6318/40	200 (200-¾)	
LNAV/VNAV DA		6399/45	281 (300-¾)	
LNAV MDA	6500/55	382 (400-1)	6500/60	382 (400-1½)
CIRCLING	6740-1	6800-1	7040-2½	7260-3
	553 (600-1)	613 (700-1)	853 (900-2½)	1073 (1100-3)

SW-1, 25 FEB 2021 to 25 MAR 2021

SW-1, 25 FEB 2021 to 25 MAR 2021