

COLEMAN, TEXAS

AL-881 (FAA)

19283

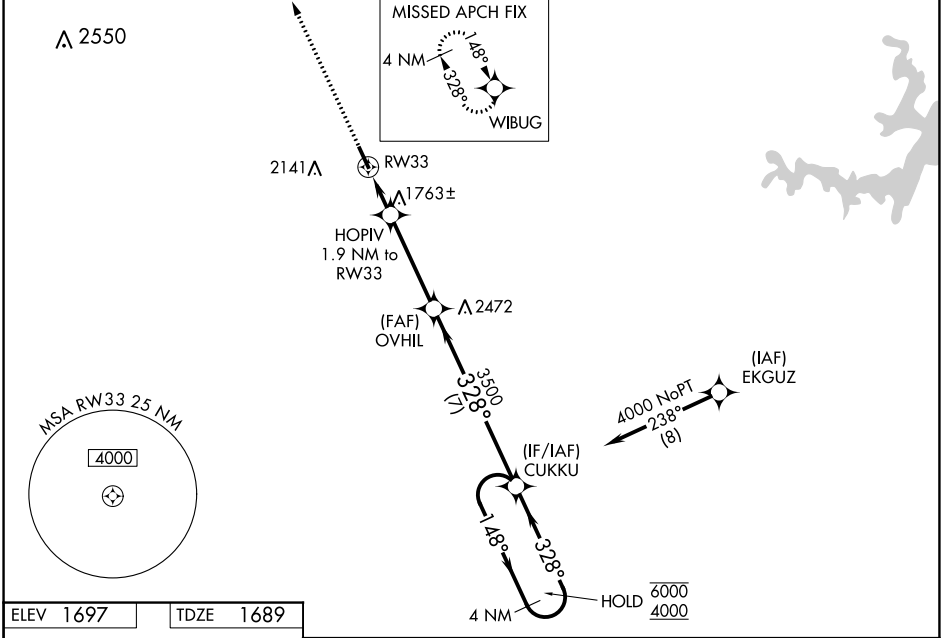
WAAS CH 82034 W33A	APP CRS 328°	Rwy Idg TDZE Apt Elev	4506 1689 1697
--	------------------------	-----------------------------	---

RNAV (GPS) RWY 33

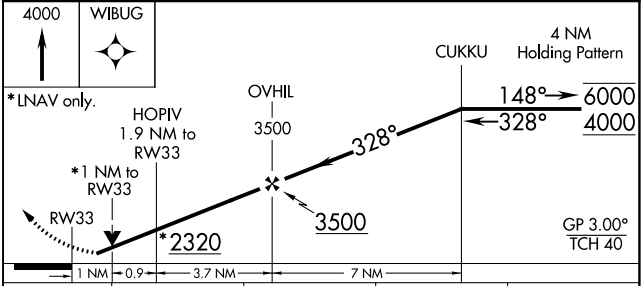
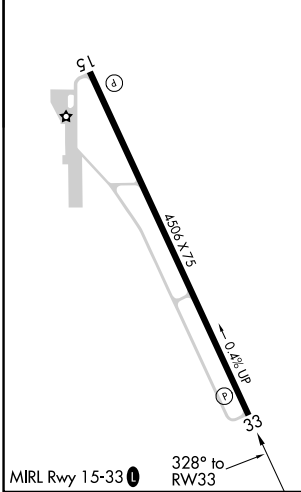
COLEMAN MUNI (COM)

RNP APCH.	<p>▼ Rwy 33 helicopter visibility reduction below 3/4 SM NA. ▲ For uncompensated Baro-VNAV systems, LNAV/VNAV NA below -18°C or above 54°C.</p>	MISSED APPROACH: Climb to 4000 direct WIBUG and hold.
-----------	--	---

AWOS-3PT 119.1	FORT WORTH CENTER 127.45 290.3	UNICOM 122.8 (CTAF) 0
--------------------------	--	---------------------------------



ELEV 1697	TDZE 1689
-----------	-----------



CATEGORY	A	B	C	D
LPV DA	1939-3/4	250 (300-3/4)		NA
LNAV/VNAV DA	1939-3/4	250 (300-3/4)		NA
LNAV MDA	2040-1	351 (400-1)		NA
<input checked="" type="checkbox"/> CIRCLING	2300-1 603 (600-1)	2460-1 763 (800-1)	2460-2 1/4 763 (800-2 1/4)	NA

COLEMAN, TEXAS
Amdt 1 10OCT19

31°50'N-99°24'W

COLEMAN MUNI (COM) RNAV (GPS) RWY 33

SC-3, 25 FEB 2021 to 25 MAR 2021

SC-3, 25 FEB 2021 to 25 MAR 2021