

WAAS CH 86529 W15A	APP CRS 148°	Rwy Idg 4506 TDZE 1697 Apt Elev 1697
--	------------------------	---

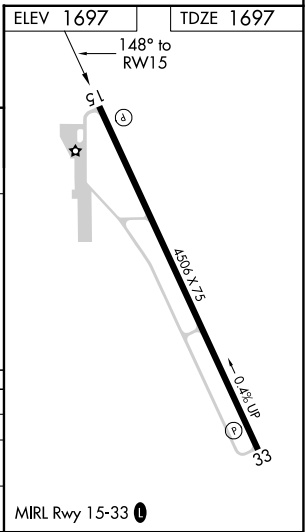
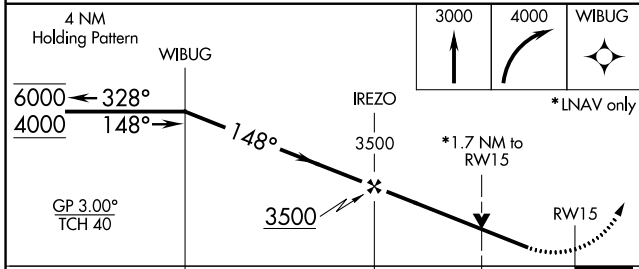
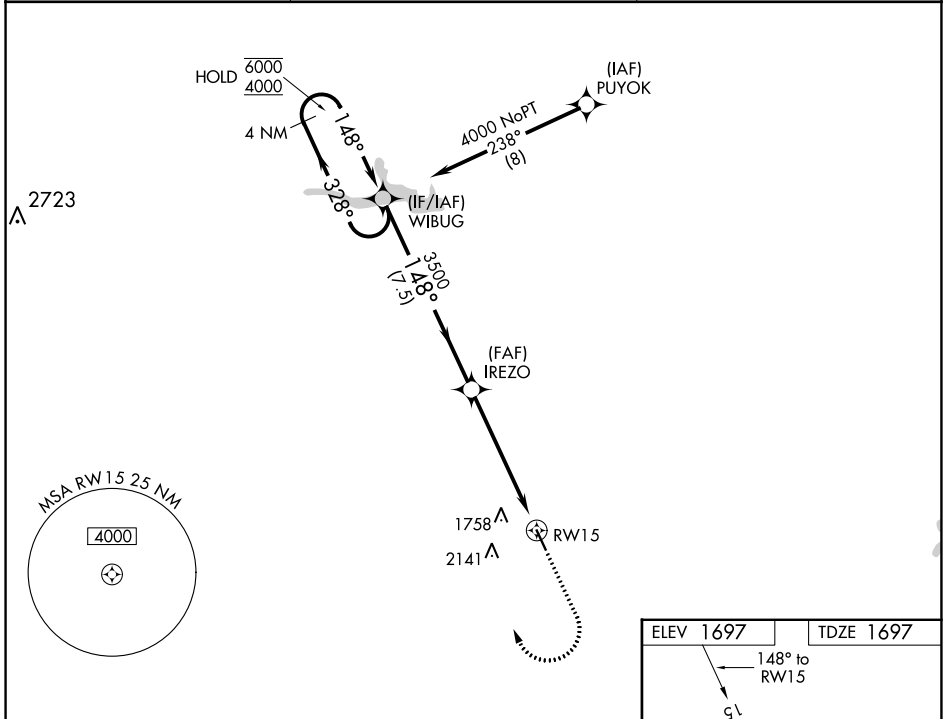
RNAV (GPS) RWY 15

COLEMAN MUNI (COM)

RNP APCH.
 ▼ Rwy 15 helicopter visibility reduction below 3/4 SM NA.
 ▲ For uncompensated Baro-VNAV systems, LNAV/VNAV NA below -18°C or above 54°C.

MISSED APPROACH: Climb to 3000 then climbing right turn to 4000 direct WIBUG and hold.

AWOS-3PT 119.1	FORT WORTH CENTER 127.45 290.3	UNICOM 122.8 (CTAF) 0
--------------------------	--	---------------------------------



CATEGORY	A	B	C	D
LPV DA	1947-3/4	250 (300-3/4)		NA
LNAV/VNAV DA	2150-1 3/8	453 (500-1 3/8)		NA
LNAV MDA	2280-1	583 (600-1)	2280-1 3/4 583 (600-1 3/4)	NA

SC-3, 25 FEB 2021 to 25 MAR 2021

SC-3, 25 FEB 2021 to 25 MAR 2021