

COCO BEACH, FLORIDA

VOR/DME RWY 3

VOR/DME 110.0 Chan 37	MLB 015°	APCH CRS 015°	Rwy Idg THRE Arpt Elev 9003 5 8
---	--------------------	-------------------------	---

AL-38 [USAF]

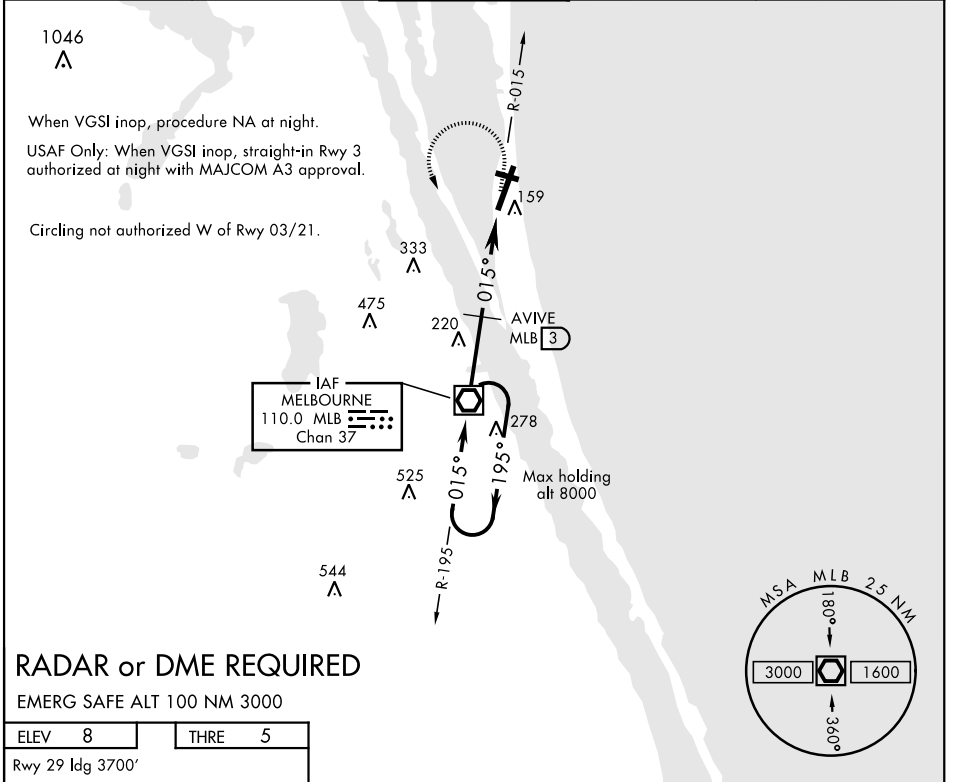
PATRICK AFB (KCOF)

▼ * When ALS inop, increase CAT AB RVR to 55 and vis to 1 mile, CAT CD vis to 1½ miles.
 ** CAUTION: When Rwy 29 VGSI inop, circling to Rwy 29 not authorized at night.

ALSF-1 

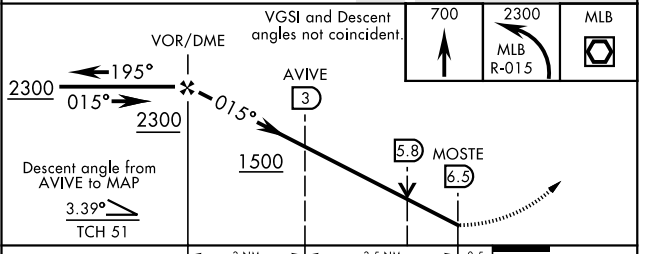
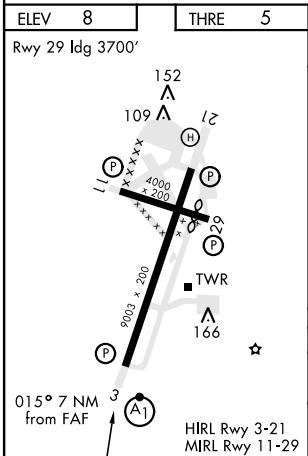
MISSED APPROACH: Climb to 700, then turn left to intercept MLB VOR/DME R-015 then direct MLB. Maintain 2300 and hold. Climb in hold required.

ATIS ★ 119.175 273.5	ORLANDO APP CON 132.65 281.425	PATRICK TOWER ★ 133.75 269.375	GND CON 124.35 335.8	CLNC DEL 118.4 289.4
--------------------------------	--	--	--------------------------------	--------------------------------



RADAR or DME REQUIRED

EMERG SAFE ALT 100 NM 3000



CATEGORY	A	B	C	D
S-3 *	460/40 455 (500-¾)		460/45 455 (500-¾)	
CIRCLING **	480-1 472 (500-1)	500-1 492 (500-1)	520-1½ 512 (600-1½)	560-2 552 (600-2)

COCO BEACH, FLORIDA
Orig 03JAN19

28°14'N-80°37'W

PATRICK AFB (KCOF)

VOR/DME RWY 3

SE-3, 25 FEB 2021 to 25 MAR 2021

SE-3, 25 FEB 2021 to 25 MAR 2021