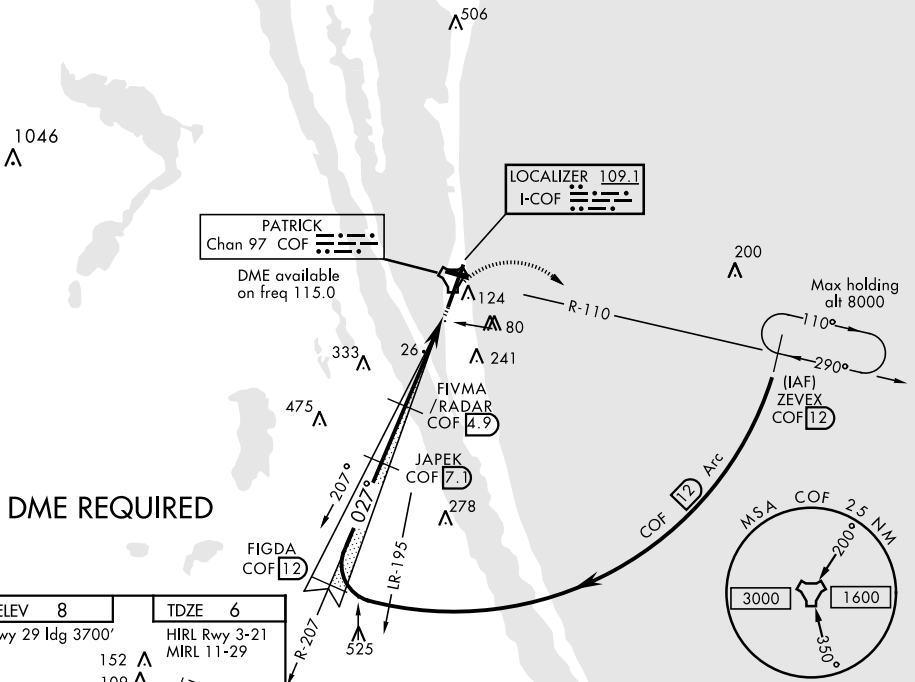


ILS or LOC/DME RWY 3

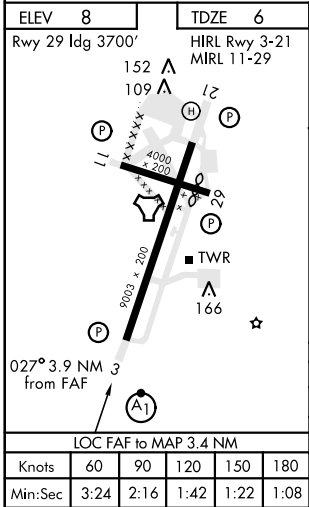
LOC I-COF 109.1	APCH CRS 027°	Rwy ldg TDZE Arprt Elev 9003 6 8	AL-38 [USAF]	PATRICK AFB (KCOF)
▼ * When ALS inop increase RVR to 40 and vis to ¼ mile. ** When ALS inop, increase CAT AB RVR to 55 and vis to 1 mile, CAT CD vis to 1¼ miles.			ALSIF-1 (A1)	MISSED APPROACH: Climb to 600, then turn right to intercept the COF R-110 direct ZEVEX, maintain 3000 and hold.

ATIS ★ 119.175 273.5	ORLANDO APP CON 132.65 281.425	PATRICK TOWER ★ 133.75 269.375	GND CON 124.35 335.8	CLNC DEL 118.4 289.4
--------------------------------	--	--	--------------------------------	--------------------------------

*** Circling not authorized W of Rwy 3-21. When Rwy 29 VGSi inop, circling to Rwy 29 NA at night. USAF only: When Rwy 29 VGSi inop, circling to Rwy 29 at night authorized with MAJCOM A3 approval.



DME REQUIRED



EMERG SAFE ALT 100 NM 3000		ZEVEX R-110 12	FIGDA Intep Lczz 12	JAPEK 7.1	FIVMA/RADAR 4.9	600	3000
VGSi and descent angles not coincident.						↑	↻
3000		3000		2000	1300	2.2	COF R-110
Arc 12		GS 3.00° TCH 52		1300	3.4	0.5	TACAN
CATEGORY	A	B	C	D			
S-ILS 3 *	205/24		200	(200-½)			
S-LOC 3 **	440/24	435 (500-½)	440/40		435 (500-¾)		
CIRCLING ***	480-1 472 (500-1)	500-1 492 (500-1)	500-1½ 492 (500-1½)		560-2 552 (600-2)		

ILS or LOC/DME RWY 3

SE-3, 25 FEB 2021 to 25 MAR 2021

SE-3, 25 FEB 2021 to 25 MAR 2021