

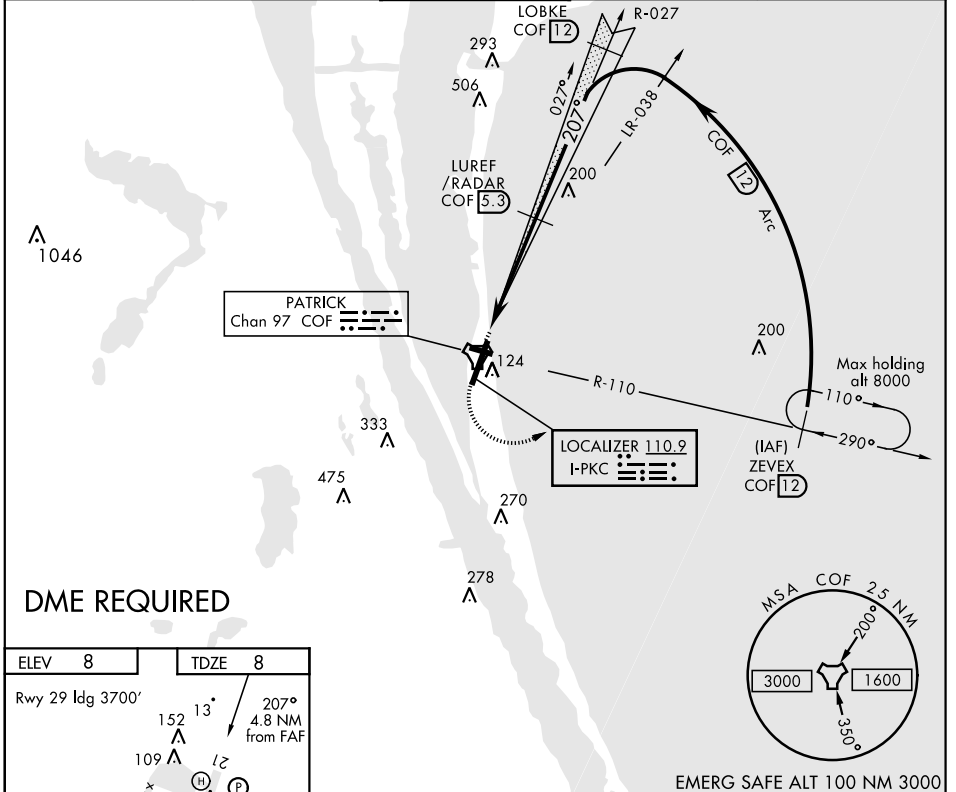
ILS or LOC/DME RWY 21

LOC I-PCK 110.9	APCH CRS 207°	Rwy ldg TDZE Arprt Elev 9003 8 8	AL-38 [USAF]	PATRICK AFB (KCOF)
---------------------------	-------------------------	--	--------------	--------------------

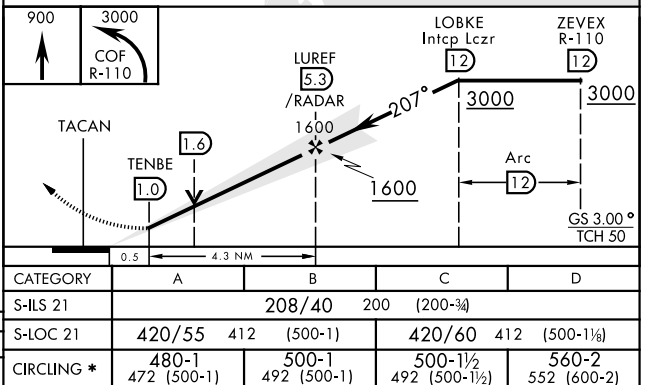
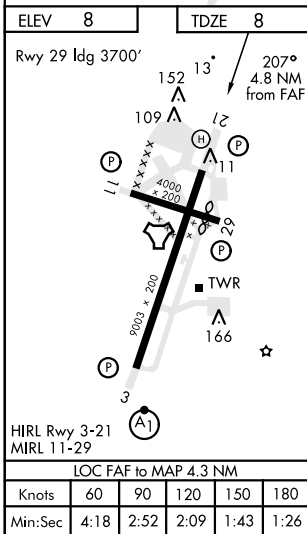
▼ * When Rwy 29 VGSI inop, circling to Rwy 29 at night requires approval from MAJCOM Director of Operations or equivalent. Circling not authorized W of Rwy 3-21.

MISSED APPROACH: Climb to 900, then turn left, intercept the COF R-110 outbound direct ZEVEX, maintain 3000 and hold.

ATIS ★ 119.175 273.5	ORLANDO APP CON 132.65 281.425	PATRICK TOWER ★ 133.75 269.375	GND CON 124.35 335.8	CLNC DEL 118.4 289.4
--------------------------------	--	--	--------------------------------	--------------------------------



DME REQUIRED



ILS or LOC/DME RWY 21

SE-3, 25 FEB 2021 to 25 MAR 2021

SE-3, 25 FEB 2021 to 25 MAR 2021