

APP CRS	Rwy Idg	<b>6013</b>
<b>252°</b>	TDZE	<b>77</b>
	Apt Elev	<b>77</b>

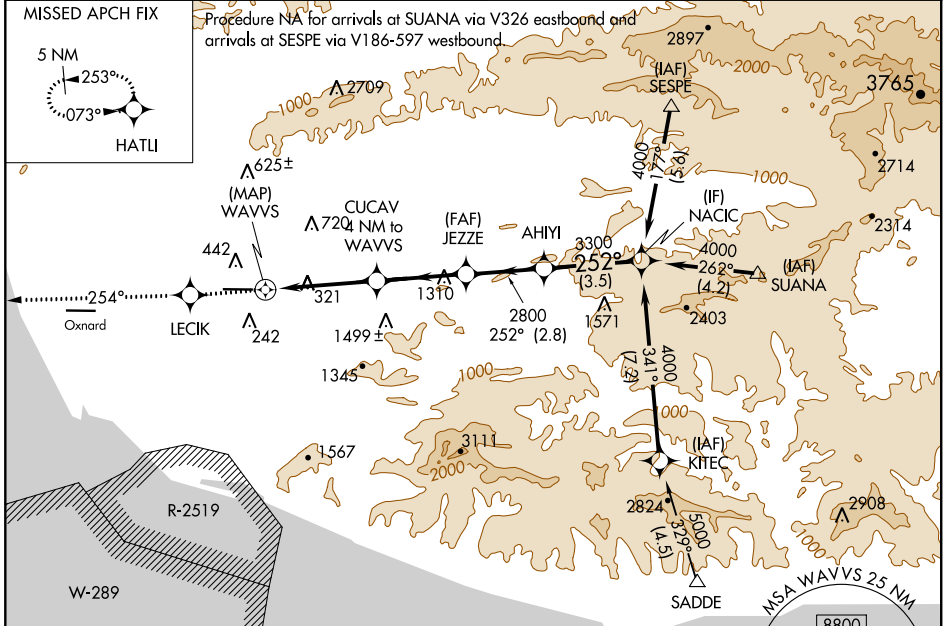
# RNAV (GPS) Y RWY 26

CAMARILLO (CMA)

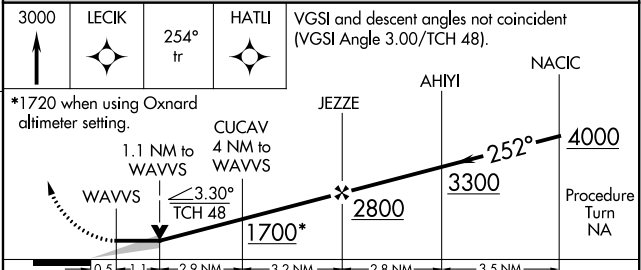
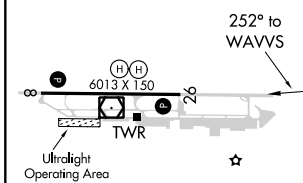
**▽** Circling NA north of Rwy 8-26. DME/DME RNP-0.3 NA.  
**▲** If local altimeter setting not received, use Oxnard altimeter setting and increase all MDAs 20 feet. VDP NA when using Oxnard altimeter setting.

MISSED APPROACH: Climb to 3000 direct LECIK and via 254° track to HATLI and hold.

ATIS	POINT MUGU APP CON *	CAMARILLO TOWER *	GND CON	CLNC DEL	POINT MUGU CLNC DEL	UNICOM
<b>126.025</b>	<b>124.7 335.5</b>	<b>128.2 (CTAF) 0 269.4</b>	<b>121.8</b>	<b>121.8</b>	<b>120.75 279.55</b>	<b>122.95</b>



ELEV 77	TDZE 77
---------	---------



CATEGORY	A	B	C	D
LNAV MDA	620-1 543 (600-1)		620-1½ 543 (600-1½)	620-1¾ 543 (600-1¾)
CIRCLING	620-1 543 (600-1)		620-1½ 543 (600-1½)	640-2 563 (600-2)

SW-3, 25 FEB 2021 to 25 MAR 2021

SW-3, 25 FEB 2021 to 25 MAR 2021