

APP CRS	Rwy Idg	7502
236°	TDZE	747
	Apt Elev	748

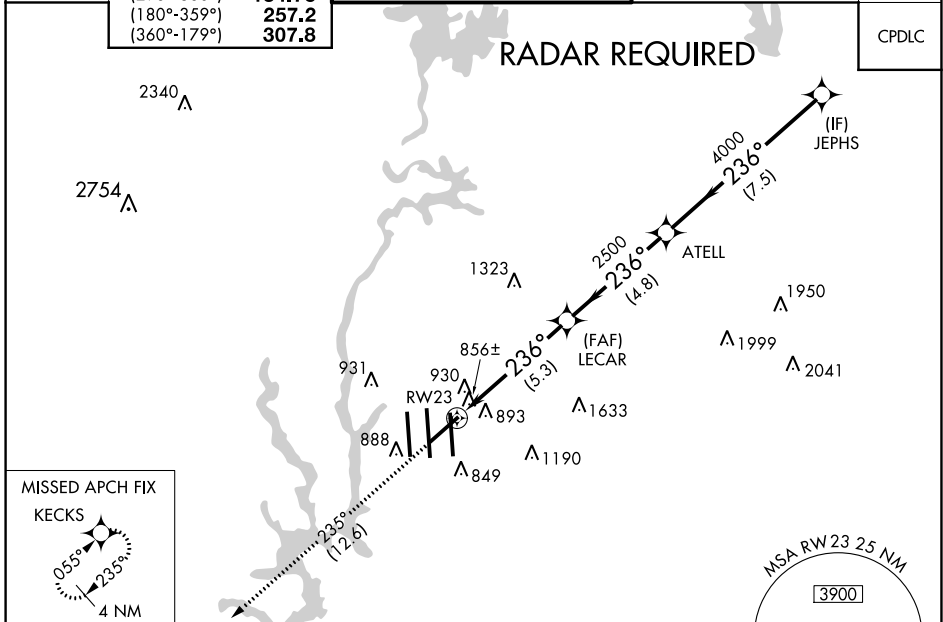
RNAV (RNP) Z RWY 23

CHARLOTTE/DOUGLAS INTL (CLT)

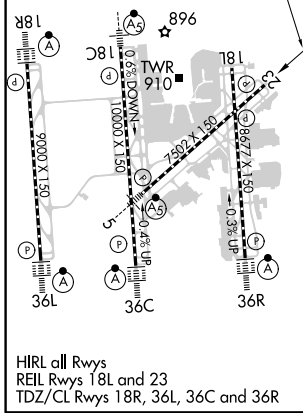
GPS required. For uncompensated Baro-VNAV systems, procedure NA below -10°C (14°F) or above 47°C (117°F).
 Visibility reduction by helicopters NA.

MISSED APPROACH: Climb to 4000 via track 235° to KECKS and hold, continue climb-in-hold to 4000.

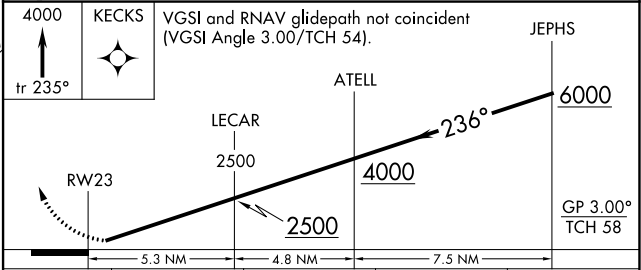
D-ATIS	CHARLOTTE APP CON	CHARLOTTE TOWER	GND CON	CLNC DEL
ARR 121.15	(001°-119°) 128.32	(Rwys 18L-36R, 5-23) 118.1	121.8 348.6 (WEST)	127.15
DEP 132.1	(120°-295°) 120.05	(Rwy 18C-36C) 126.4	121.9 348.6 (EAST)	348.6
	(296°-360°) 134.75	(Rwy 18R-36L) 133.35		
	(180°-359°) 257.2			
	(360°-179°) 307.8			



ELEV	748	D	TDZE	747
------	------------	----------	------	------------



HIRL all Rwys
 REIL Rwys 18L and 23
 TDZ/CL Rwys 18R, 36L, 36C and 36R



CATEGORY	A	B	C	D
RNP 0.11 DA		1091/60	344 (400-1¼)	
RNP 0.30 DA		1219-1½	472 (500-1½)	

AUTHORIZATION REQUIRED

SE-2, 25 FEB 2021 to 25 MAR 2021

SE-2, 25 FEB 2021 to 25 MAR 2021