

LOC/DME I-VKQ 110.35 Chan 40(Y)	APP CRS 183°	Rwy Idg 8676
		TDZE 748
		Apt Elev 748

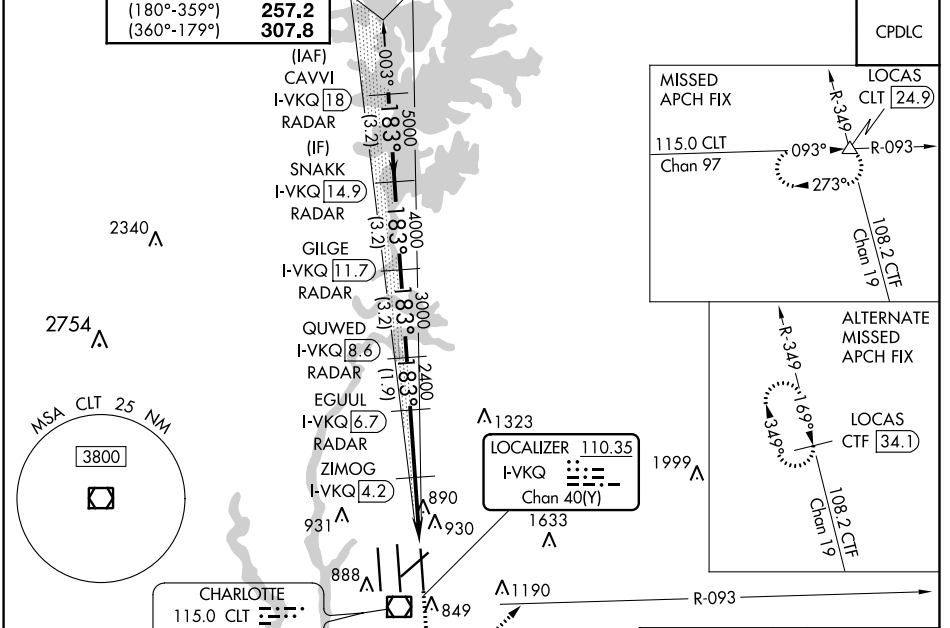
ILS or LOC RWY 18L

CHARLOTTE/DOUGLAS INTL (CLT)

RADAR required for procedure entry. DME or RADAR required. MISSED APPROACH: Climb to 1300 then climbing left turn to 4000 on CLT VOR/DME R-093 to LOCAS INT/CLT 24.9 DME and hold.

Simultaneous approach authorized.
Rwy 18L helicopter visibility reduction below RVR 4000 NA.

D-ATIS ARR 121.15 DEP 132.1	CHARLOTTE APP CON 128.32 (001°-119°) 120.05 (120°-295°) 134.75 (296°-360°) 257.2 (180°-359°) 307.8 (360°-179°)	CHARLOTTE TOWER (Rwys 18L-36R, 5-23) 118.1 257.8 (Rwy 18C-36C) 126.4 257.8 (Rwy 18R-36L) 133.35 257.8	GND CON 121.8 348.6 (WEST) 121.9 348.6 (EAST)	CLNC DEL 127.15 348.6
---	---	---	---	---



VGS1 and ILS glidepath not coincident (VGS1 Angle 3.00/TCH 76).		1300	4000	CLT R-093	LOCAS CLT 24.9
CAVVI I-VKQ 18 RADAR	SNAKK I-VKQ 14.9 RADAR	GILGE I-VKQ 11.7 RADAR	QUWED I-VKQ 8.6 RADAR	EGUUL I-VKQ 6.7 RADAR	ZIMOG I-VKQ 4.2 RADAR
6000		783°		5000	
4000		3000		2400	
GS 3.00° TCH 56		2400		*1260	
-3.2 NM		-3.2 NM		-1.9 NM	
-3.2 NM		-2.4 NM		-1.6 NM	
-1.6 NM		1 NM		*LOC only	
CATEGORY	A	B	C	D	
S-ILS 18L	1002/40 254 (300-¾)				
S-LOC 18L	1260/55	512 (600-1)	1260-1⅓	512 (600-1⅓)	
ZIMOG FIX MINIMUMS (DME REQUIRED)					
S-LOC 18L	1140/55	392 (400-1)	1140/60	392 (400-1¼)	

