

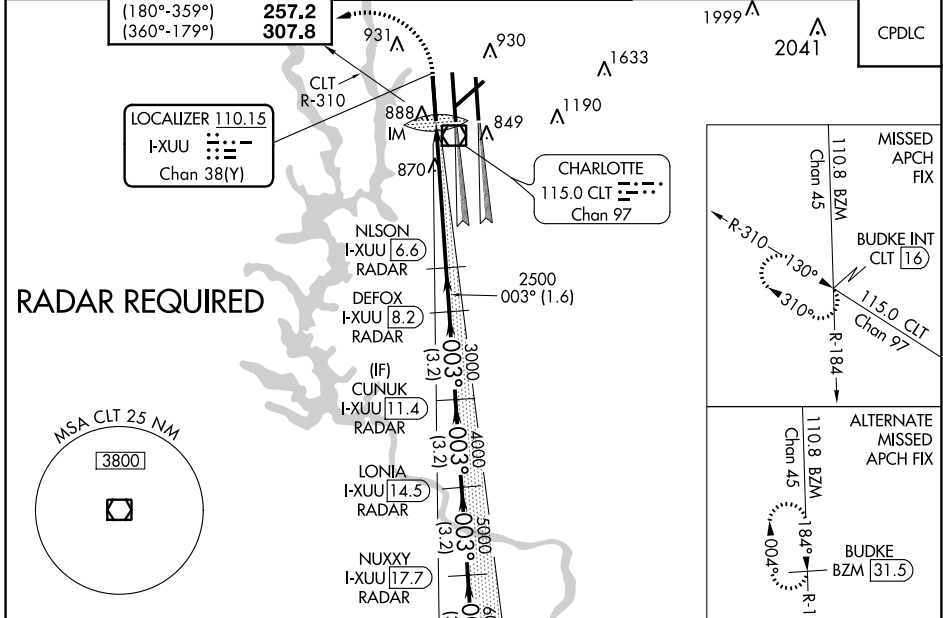
LOC/DME I-XUU 110.15 Chan 38(Y)	APP CRS 003°	Rwy Idg TDZE 744 Apt Elev 748	9000
---	------------------------	---	-------------

ILS RWY 36L (CAT II & III)

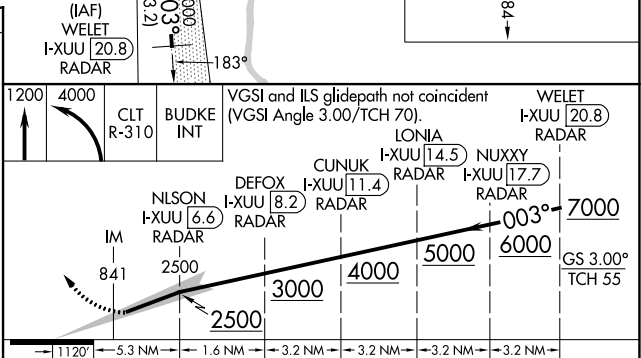
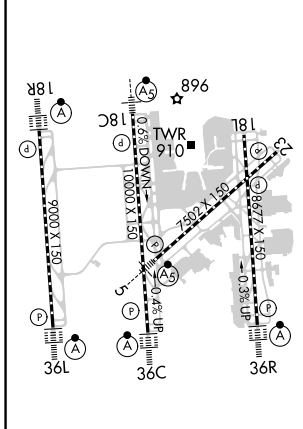
CHARLOTTE/DOUGLAS INTL (CLT)

⚠	Simultaneous approach authorized. DME or RADAR required.	ALSF-2 	MISSED APPROACH: Climb to 1200 then climbing left turn to 4000 on CLT VOR/DME R-310 to BUDKE INT/CLT 16 DME and hold.
----------	---	------------	---

D-ATIS ARR 121.15 DEP 132.1	CHARLOTTE APP CON (001°-119°) 128.32 (120°-295°) 120.05 (296°-360°) 134.75 (180°-359°) 257.2 (360°-179°) 307.8	CHARLOTTE TOWER (Rwys 18L-36R, 5-23) 118.1 257.8 (Rwy 18C-36C) 126.4 257.8 (Rwy 18R-36L) 133.35 257.8	GND CON 121.8 348.6 (WEST) 121.9 348.6 (EAST)	CLNC DEL 127.15 348.6
---	--	---	---	---



ELEV 748	D	TDZE 744
----------	----------	----------



CATEGORY	A	B	C	D
S-ILS 36L	CAT II RA 106/12 100 DA 844			
S-ILS 36L	CAT IIIa RVR 07			
S-ILS 36L	CAT IIIb RVR 06			
S-ILS 36L	CAT IIIc NA			

CATEGORY II & III ILS SPECIAL AIRCREW & AIRCRAFT CERTIFICATION REQUIRED

SE-2, 25 FEB 2021 to 25 MAR 2021

SE-2, 25 FEB 2021 to 25 MAR 2021