

LOC/DME I-RGS 110.15 Chan 38(Y)	APP CRS 183°	Rwy Idg 9000 TDZE 744 Apt Elev 748
---	------------------------	---

ILS RWY 18R (SA CAT I)

CHARLOTTE/DOUGLAS INTL (CLT)

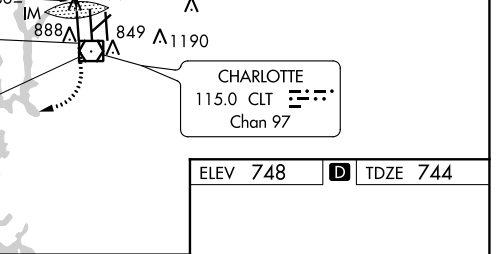
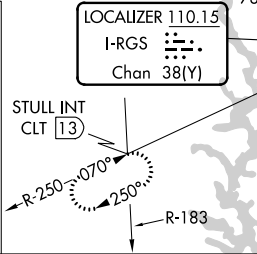
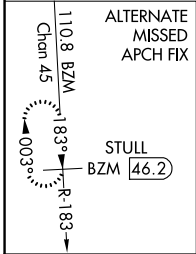
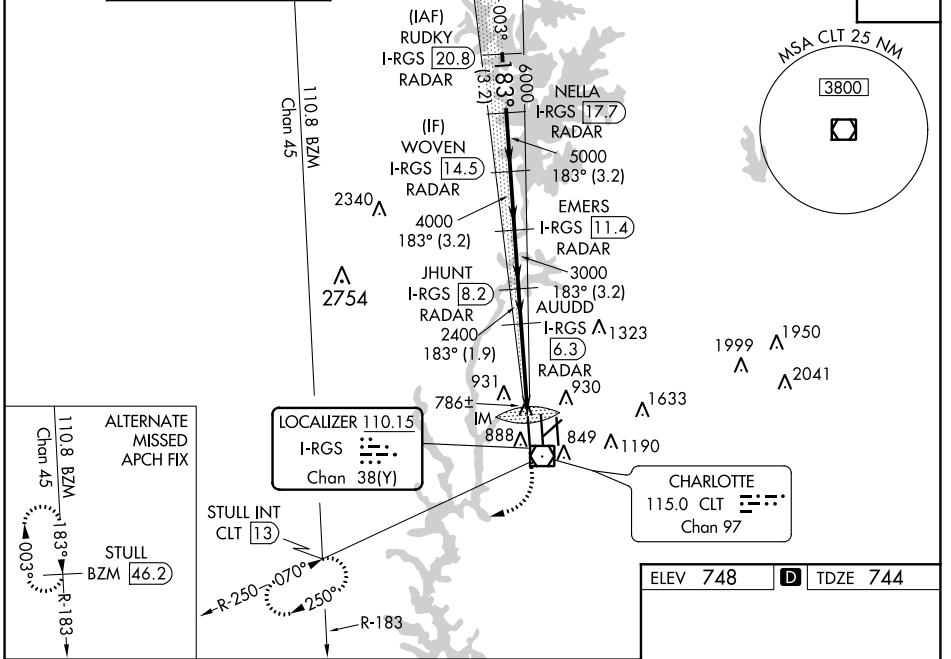
RADAR required for procedure entry. DME or RADAR required.

- Simultaneous approach authorized.
- Requires specific OPSPEC, MSPEC or LOA approval and use of HUD to DH.

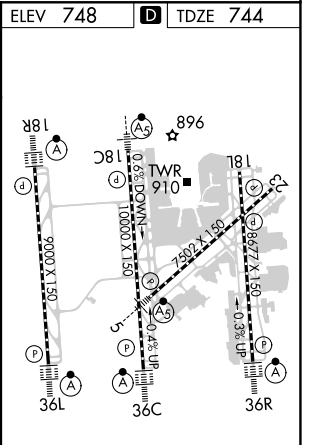


MISSED APPROACH: Climb to 1200 then climbing right turn to 4000 on CLT VOR/DME R-250 to STULL INT/CLT 13 DME and hold, continue climb-in-hold to 4000.

D-ATIS ARR 121.15 DEP 132.1	CHARLOTTE APP CON (001°-119°) 128.32 (120°-295°) 120.05 (296°-360°) 134.75 (180°-359°) 257.2 (360°-179°) 307.8	CHARLOTTE TOWER (Rwys 18L-36R, 5-23) 118.1 257.8 (Rwy 18C-36C) 126.4 257.8 (Rwy 18R-36L) 133.35 257.8	GND CON 121.8 348.6 (WEST) 121.9 348.6 (EAST)	CLNC DEL 127.15 348.6
---	--	---	---	---



VGSI and ILS glidepath not coincident (VGSI Angle 2.80/TCH 65).				
RUDKY I-RGS 20.8 RADAR NELLA I-RGS 17.7 RADAR WOVEN I-RGS 14.5 RADAR EMERS I-RGS 11.4 RADAR JHUNT I-RGS 8.2 RADAR AUUDD I-RGS 6.3 RADAR	1200 4000 STULL INT CLT R-250	7000 6000 5000 4000 3000 2400	GS 3.00° TCH 55	IM 1078'
-3.2 NM 3.2 NM 3.2 NM 3.2 NM 1.9 NM 5 NM 1078'	CATEGORY A B C D	S-ILS 18R RA 228/14 150 DA 894	SA CATEGORY I ILS SPECIAL AIRCREW & AIRCRAFT CERTIFICATION REQUIRED	



HIRL all Rwys
REIL Rwys 18L and 23
TDZ/CL Rwys 18R, 36L, 36C and 36R

SE-2, 25 FEB 2021 to 25 MAR 2021

SE-2, 25 FEB 2021 to 25 MAR 2021