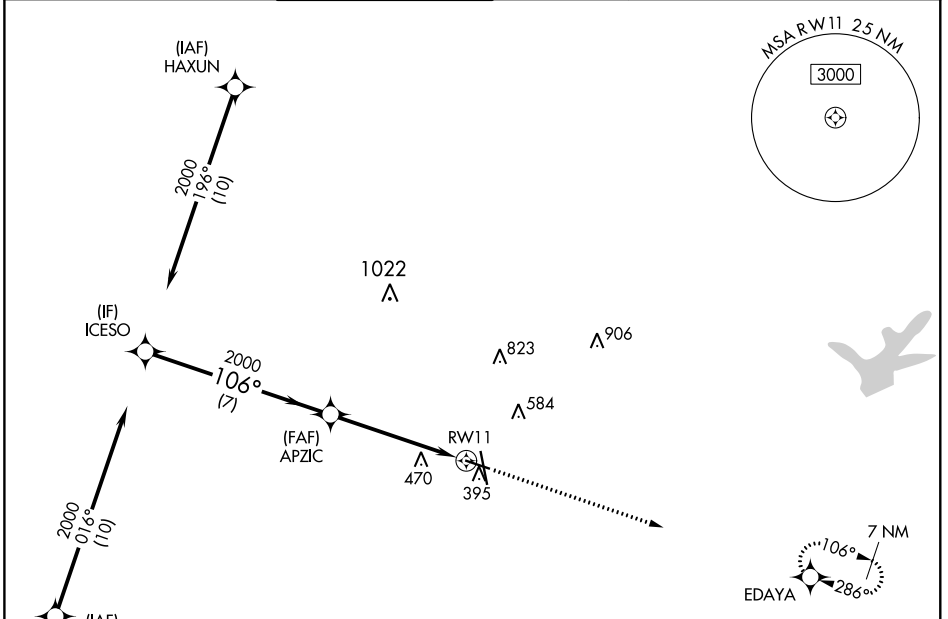


WAAS CH <b>65632</b>	APP CRS <b>106°</b>	Rwy Idg TDZE Apt Elev	<b>5158</b> <b>319</b> <b>321</b>
<b>W11A</b>			

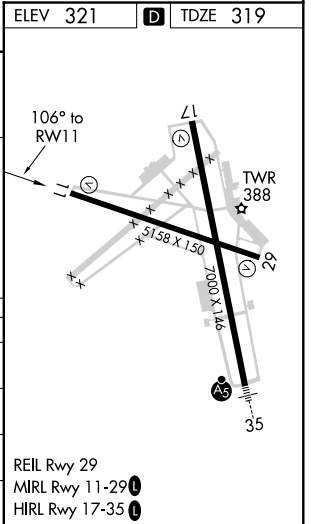
# RNAV (GPS) RWY 11

EASTERWOOD FIELD (CLL)

RNP APCH.		MISSED APPROACH: Climb to 3000 direct EDAYA and hold.				
For uncompensated Baro-VNAV systems, LNAV/VNAV NA below -3°C or above 54°C. Rwy 11 helicopter visibility reduction below 3/4 SM NA.						
ATIS <b>126.85</b>	HOUSTON APP CON <b>134.3 360.85</b>	EASTERWOOD TOWER ★ <b>118.5 (CTAF) 284.7</b>	GND CON <b>128.7 284.7</b>	CLNC DEL <b>128.7</b>	CLNC DEL <b>120.4</b> <small>(when twr closed)</small>	UNICOM <b>122.95</b>



ELEV 321	TDZE 319
GP 3.00° TCH 50	*LNAV only.
CATEGORY	A B C D E
LPV DA	569-3/4 250 (300-3/4)
LNAV/VNAV DA	641-1 322 (400-1)
LNAV MDA	740-1 421 (500-1) 740-1 1/4 421 (500-1 1/4)
CIRCLING	860-1 880-1 1000-2 1180-2 3/4 1180-3 539 (600-1) 559 (600-1) 679 (700-2) 859 (900-2 3/4) 859 (900-3)



REIL Rwy 29  
MIRL Rwy 11-29   
HIRL Rwy 17-35

SC-5, 25 FEB 2021 to 25 MAR 2021

SC-5, 25 FEB 2021 to 25 MAR 2021