

WAAS CH <b>40120</b> <b>W36A</b>	APP CRS <b>003°</b>	Rwy Idg <b>5404</b> TDZE <b>173</b> Apt Elev <b>173</b>
--	------------------------	---

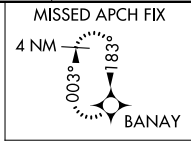
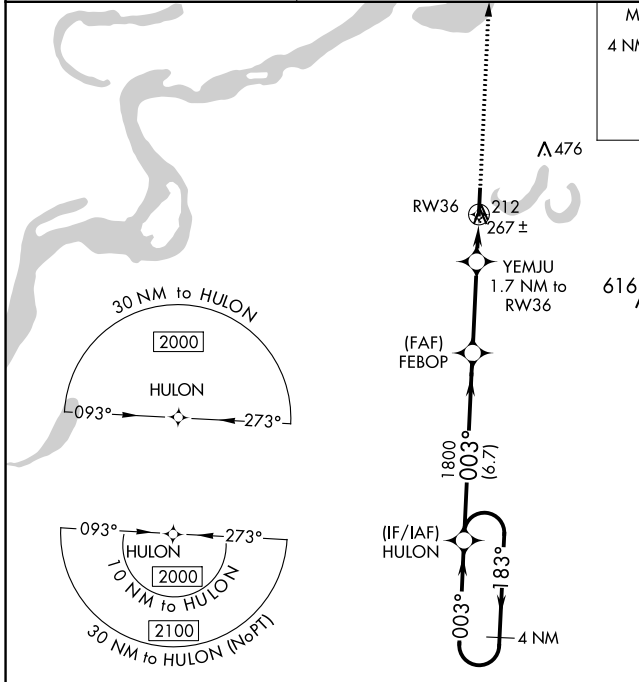
# RNAV (GPS) RWY 36

FLETCHER FIELD (CKM)

⚠ For uncompensated Baro-VNAV systems, LNAV/VNAV NA below -15°C (5°F) or above 54°C (130°F). DME/DME RNP-0.3 NA. When local altimeter setting not received, use Tunica altimeter setting: increase LPV DA to 537 feet, LNAV/VNAV DA to 508 feet and all MDA 60 feet; increase LPV all Cats visibility ¼ SM, LNAV/VNAV all Cats visibility ½ SM, and LNAV Cat C/D visibility ½ SM. Baro-VNAV NA with Tunica altimeter setting. Straight-in/Circling Rwy 36 NA at night. Rwy 36 helicopter visibility reduction below 1 SM NA.

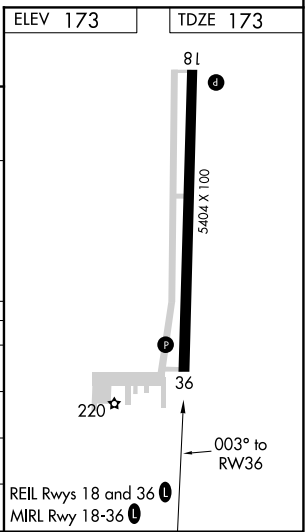
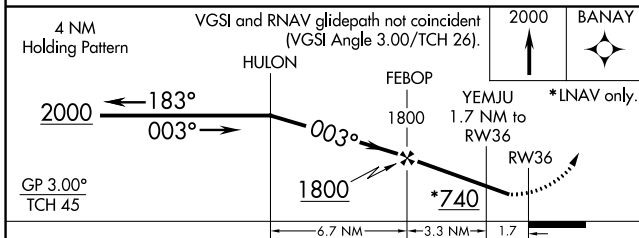
**MISSED APPROACH:**  
Climb to 2000 direct BANAY and hold.

AWOS-3 <b>120.675</b>	MEMPHIS CENTER <b>135.3 335.8</b>	UNICOM <b>122.8 (CTAF) ①</b>
--------------------------	--------------------------------------	---------------------------------



SC-4, 25 FEB 2021 to 25 MAR 2021

SC-4, 25 FEB 2021 to 25 MAR 2021



CATEGORY	A	B	C	D
LPV DA		477-1	304 (400-1)	
LNAV/VNAV DA		448-1	275 (300-1)	
LNAV MDA		520-1	347 (400-1)	
<b>C</b> CIRCLING	740-1	567 (600-1)	780-1¾ 607 (700-1¾)	780-2 607 (700-2)

REIL Rwys 18 and 36 ①  
MRL Rwy 18-36 ①