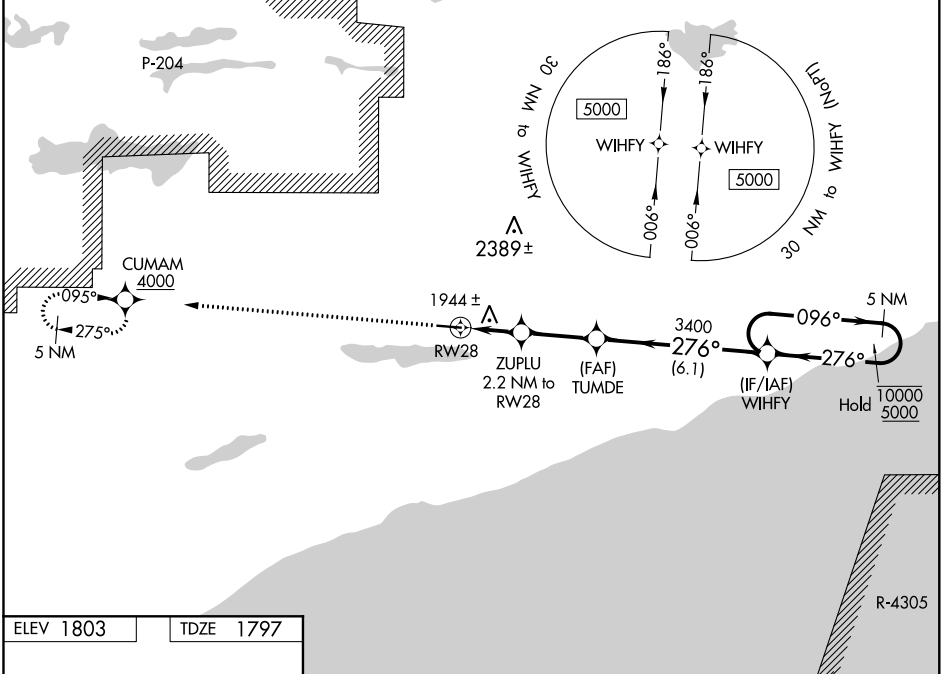


WAAS CH <b>69520</b> <b>W28A</b>	APP CRS <b>276°</b>	Rwy Idg TDZE Apt Elev	<b>5002</b> <b>1797</b> <b>1803</b>
--	------------------------	-----------------------------	---

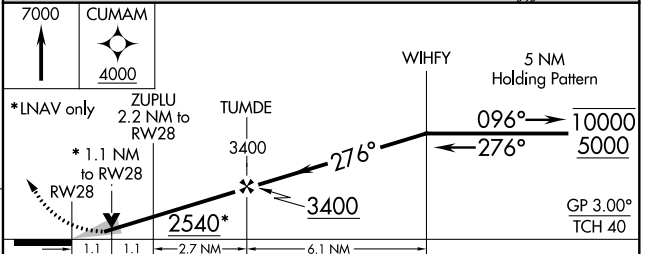
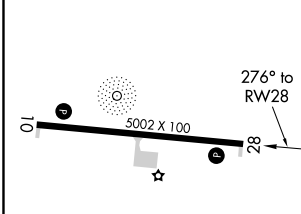
# RNAV (GPS) RWY 28

GRAND MARAIS/COOK COUNTY (CKC)

RNP APCH.	MISSED APPROACH: Climb to 7000 direct CUMAM, cross CUMAM at or above 4000 and hold, continue climb-in-hold to 7000.	
<p><b>⚠</b> Circling Rwy 10 NA at night. Rwy 28 helicopter visibility reduction below ¼ SM NA. For uncompensated Baro-VNAV systems, LNAV/VNAV NA below -18°C or above 54°C.</p> <p><b>❄</b> -30°C</p>		
AWOS-3 <b>119.925</b>	MINNEAPOLIS CENTER <b>127.9 281.45</b>	UNICOM <b>122.8 (CTAF) 0</b>



ELEV 1803	TDZE 1797
-----------	-----------



CATEGORY	A	B	C	D
LPV DA		2047-1	250 (300-1)	
LNAV/VNAV DA		2219-1¼	422 (500-1¼)	
LNAV MDA	2200-1	403 (400-1)	2200-1½	403 (400-1½)
<b>C</b> CIRCLING	2300-1	497 (500-1)	2380-1½ 577 (600-1½)	2640-2¾ 837 (900-2¾)

NC-1, 25 FEB 2021 to 25 MAR 2021

NC-1, 25 FEB 2021 to 25 MAR 2021