

(SWPFX2.SWPFX) 20310

AL-76 (FAA)

CHARLESTON AFB/INTL (CHS)  
CHARLESTON, SOUTH CAROLINA

# SWPFX TWO DEPARTURE (RNAV)

ATIS  
124.75  
GND CON  
121.9 348.6  
CLNC DEL  
127.325 291.65  
CPDLC  
CHARLESTON TOWER  
126.0 239.0  
CHARLESTON DEP CON  
119.3 379.925

**TOP ALTITUDE:  
4000**

TAKEOFF MINIMUMS:

Rwys 15, 33: Standard.

Rwys 3, 21: Standard with minimum  
climb of 500' per NM  
to 560.

NOTE: Transponder code will be issued  
by Charleston clearance delivery.

NOTE: If unable to accept climb rate,  
advise ATC on initial contact.

NOTE: DME/DME/IRU or GPS Required.

NOTE: RNAV 1.

NOTE: Radar Required for non-GPS  
equipped aircraft.

NOTE: For non-GPS equipped aircraft: CHS  
and VAN DMEs must be operational  
for Takeoff Rwys 15, 21.

NOTE: Chart not to scale.

**DEPARTURE ROUTE DESCRIPTION**

TAKEOFF RWY 3: Climb heading 031° to 560  
MSL, then direct PALLI, then on depicted route  
to SWPFX, thence. . . .

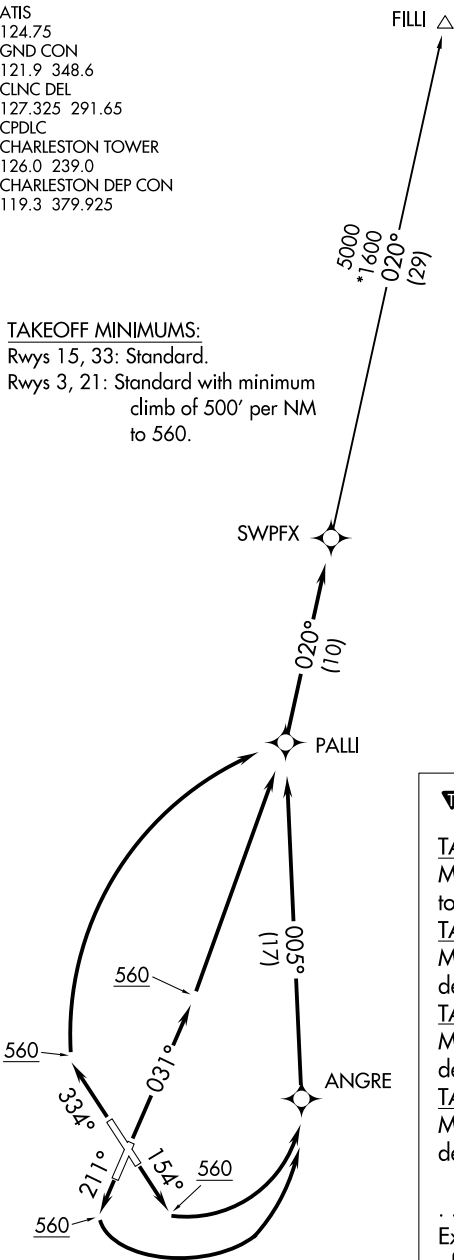
TAKEOFF RWY 15: Climb heading 154° to 560  
MSL, then left turn direct ANGRE, then on  
depicted route to SWPFX, thence. . . .

TAKEOFF RWY 21: Climb heading 211° to 560  
MSL, then left turn direct ANGRE, then on  
depicted route to SWPFX, thence. . . .

TAKEOFF RWY 33: Climb heading 334° to 560  
MSL, then right turn direct PALLI, then on  
depicted route to SWPFX, thence. . . .

. . . . on assigned transition, maintain 4000.  
Expect clearance to filed altitude 10 minutes  
after departure.

FILLI TRANSITION (SWPFX2.FILLI):



SE-2, 25 FEB 2021 to 25 MAR 2021

SE-2, 25 FEB 2021 to 25 MAR 2021

**SWPFX TWO DEPARTURE (RNAV)**  
(SWPFX2.SWPFX) 21JUL16

CHARLESTON, SOUTH CAROLINA  
CHARLESTON AFB/INTL (CHS)