

PLMTO THREE DEPARTURE (RNAV)

TOP ALTITUDE:
4000

NOTE: Chart not to scale.

DEPARTURE ROUTE DESCRIPTION

TAKEOFF RUNWAY 3: Climb on heading 031° to 560, then right turn direct LOIRN, then on depicted route to PLMTO, thence. . . .

TAKEOFF RUNWAY 15: Climb on heading 154° to 560, then left turn direct JAYLN, then on depicted route to PLMTO, thence. . . .

TAKEOFF RUNWAY 21: Climb on heading 211° to 560, then left turn direct JAYLN, then on depicted route to PLMTO, thence. . . .

TAKEOFF RUNWAY 33: Climb on heading 334° to 560, then right turn direct LOIRN, then on depicted route to PLMTO, thence. . . .

. . . on assigned transition/route. Maintain 4000. Expect clearance to filed altitude within ten minutes after departure.

GRAND STRAND TRANSITION (PLMTO3.CRE):

SE-2, 25 FEB 2021 to 25 MAR 2021

ATIS 124.75
 CLNC DEL 127.325 291.65
 CPDLC
 GND CON 121.9 348.6
 CHARLESTON TOWER 126.0 239.0
 DEP CON 119.3 379.925

NOTE: If unable to accept climb rate, advise ATC on initial contact.

NOTE: RNAV 1.

NOTE: DME/DME/IRU or GPS required.

NOTE: RADAR required for non-GPS equipped aircraft.

GRAND STRAND CRE

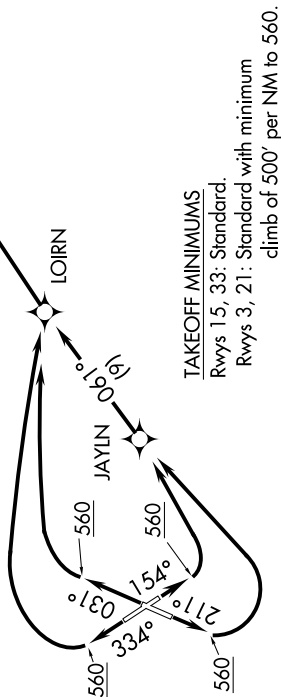
5000
121.00
0.48°
(49)

PLMTO

N

LOIRN

JAYLN



TAKEOFF MINIMUMS
 Rwy 15, 33: Standard.
 Rwy 3, 21: Standard with minimum climb of 500' per NM to 560.

PLMTO THREE DEPARTURE (RNAV)

SE-2, 25 FEB 2021 to 25 MAR 2021