


WAAS CH <b>61105</b> <b>W03A</b>	APP CRS <b>030°</b>	Rwy Idg <b>6801</b> TDZE <b>640</b> Apt Elev <b>640</b>
--	------------------------	---

# RNAV (GPS) RWY 3

CHARLOTTESVILLE-ALBEMARLE (CHO)

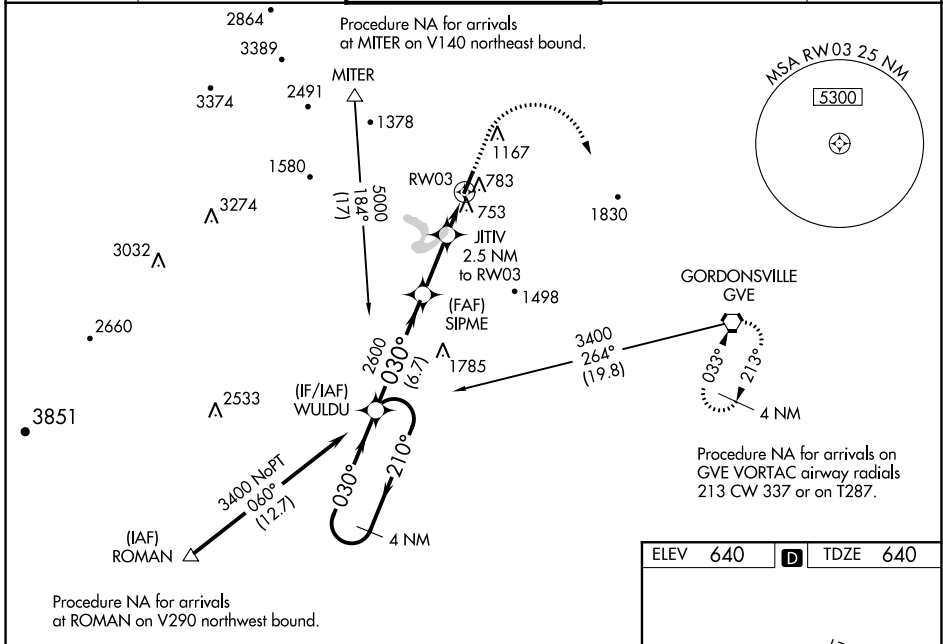
**⚠** For uncompensated Baro-VNAV systems, LNAV/VNAV NA below -12°C (11°F) or above 54°C (130°F). DME/DME RNP-0.3 NA. When local altimeter setting not received, use Orange altimeter setting and increase LPV DA to 912, LNAV/VNAV DA to 986, and all MDA 80 feet; increase LNAV/VNAV all Cats visibility 1/8 mile, Circling Cats C/D visibility 1/4 mile, and LNAV Cats C/D visibility 3/8 mile. Baro-VNAV and VDP NA when using Orange altimeter setting. For inoperative MALS, increase LNAV/VNAV Cats C/D to 3/8 mile and LNAV Cats C/D visibility to 1 mile. For inoperative MALS when using Orange altimeter setting, increase LPV all Cats visibility to 3/8 mile, and LNAV Cats C/D visibility to 1 3/8 mile.

**MALS**



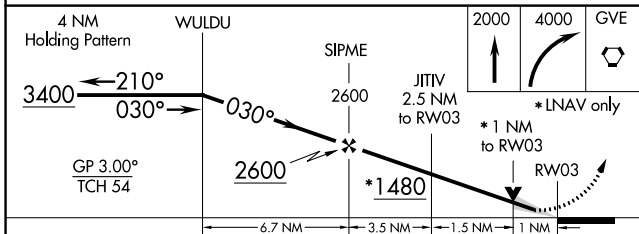
**MISSED APPROACH:**  
Climb to 2000 then climbing right turn to 4000 direct GVE VORTAC and hold.

ATIS <b>118.425</b>	POTOMAC APP CON <b>132.85 323.125</b>	CHARLOTTESVILLE TOWER ★ <b>124.5 (CTAF) 0 338.275</b>	GND CON <b>121.9 338.275</b>	UNICOM <b>122.95</b>
------------------------	--	--	---------------------------------	-------------------------



NE-3, 25 FEB 2021 to 25 MAR 2021

NE-3, 25 FEB 2021 to 25 MAR 2021



CATEGORY	A	B	C	D
LPV DA	840-1/2		200 (200-1/2)	
LNAV/VNAV DA	914-1/2		274 (300-1/2)	
LNAV MDA	1020-1/2 380 (400-1/2)		1020-5/8 380 (400-5/8)	
<b>C</b> CIRCLING	1060-1 420 (500-1)	1100-1 460 (500-1)	1500-2 1/2 860 (900-2 1/2)	1500-2 3/4 860 (900-2 3/4)

