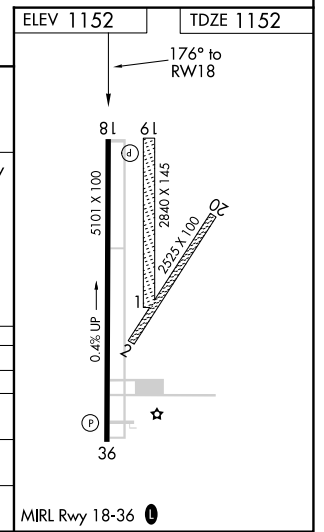
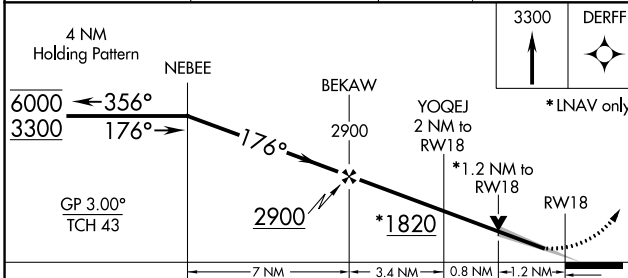
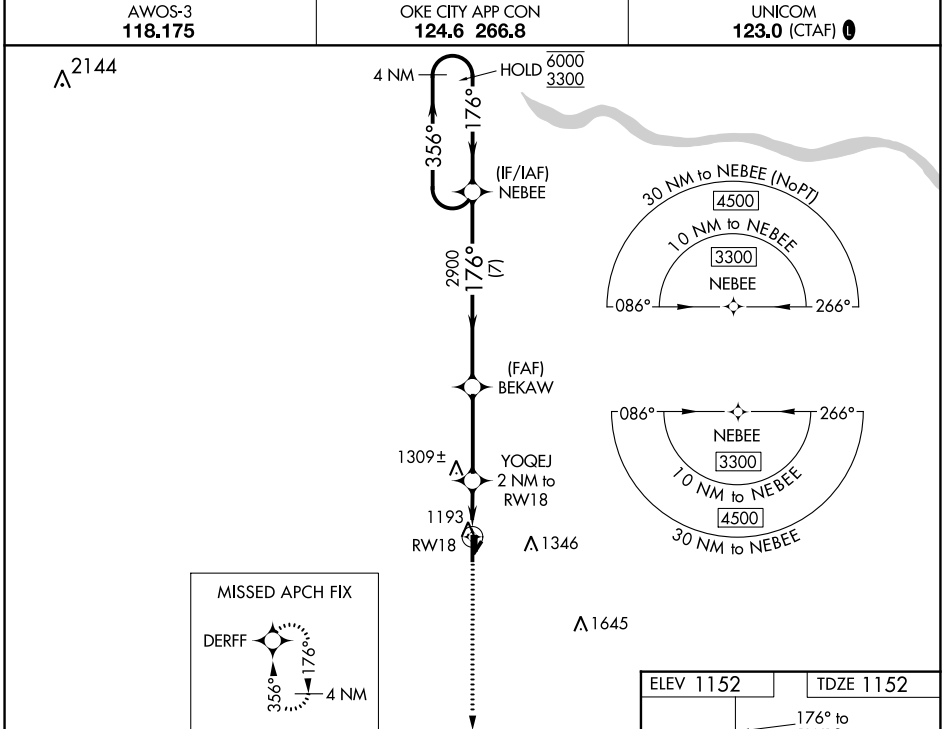


WAAS CH <b>70430</b> <b>W18A</b>	APP CRS <b>176°</b>	Rwy Idg TDZE Apt Elev	<b>5101</b> <b>1152</b> <b>1152</b>
--	------------------------	-----------------------------	---

# RNAV (GPS) RWY 18

CHICKASHA MUNI (CHK)

RNP APCH.	<p>▼ Circling NA to Rwys 1, 2, 19 and 20. For uncompensated Baro-VNAV systems, LNAV/VNAV NA below -17°C or above 54°C.</p>	<p>MISSED APPROACH: Climb to 3300 direct DERFF and hold.</p>
AWOS-3 <b>118.175</b>	OKE CITY APP CON <b>124.6 266.8</b>	UNICOM <b>123.0 (CTAF) 0</b>



4 NM Holding Pattern	NEBEE	BEKAW	YOQEJ 2 NM to RW18	RW18
6000 ← 356°		2900	*1.2 NM to RW18	
3300 → 176°			*1.2 NM to RW18	
GP 3.00° TCH 43				
	7 NM	3.4 NM	0.8 NM	1.2 NM
CATEGORY	A	B	C	D
LPV DA	1352-3/4	200 (200-3/4)		NA
LNAV/VNAV DA	1482-1 1/8	330 (400-1 1/8)		NA
LNAV MDA	1560-1	408 (500-1)	1560-1 1/8 408 (500-1 1/8)	NA
CIRCLING	1600-1 448 (500-1)	1620-1 468 (500-1)	1700-1 1/2 548 (600-1 1/2)	NA

SC-1, 25 FEB 2021 to 25 MAR 2021

SC-1, 25 FEB 2021 to 25 MAR 2021