

WAAS CH 45834 W09A	APP CRS 095°	Rwy Idg 4557 TDZE 9 Apt Elev 9
--	------------------------	---

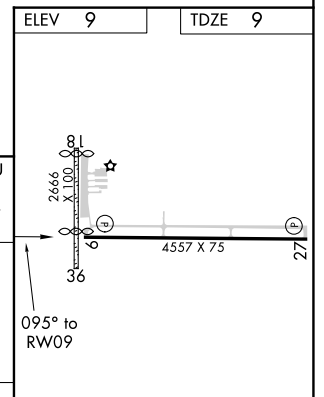
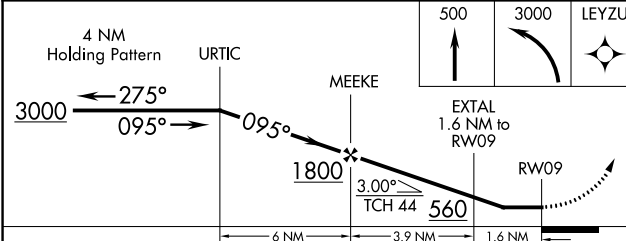
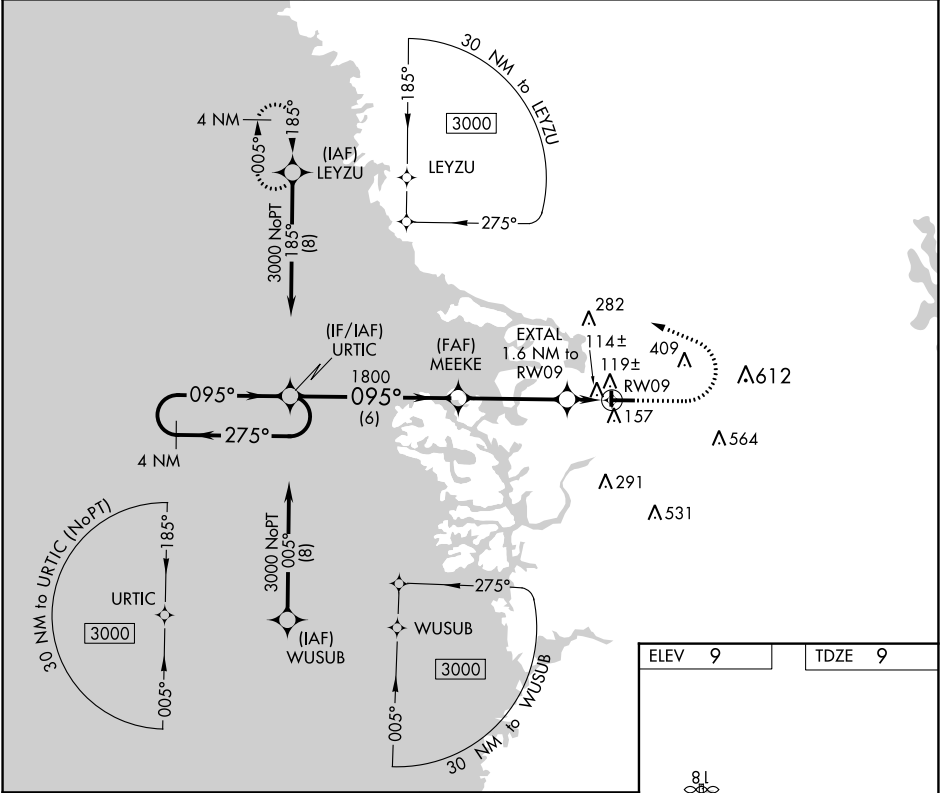
RNAV (GPS) RWY 9

CRYSTAL RIVER-CAPTAIN TOM DAVIS FIELD (CGC)

▼ Procedure NA at night. DME/DME RNP-0.3 NA. When local altimeter setting not received, use Ocala altimeter setting and increase all MDA 80 feet; increase LP Cat C/D visibility 3/8 mile, LNAV Cat C/D visibility 1/4 mile and Circling Cat C/D visibility 1/4 mile. Helicopter visibility reduction below 1 SM NA.

▲ MISSED APPROACH: Climb to 500 then climbing left turn to 3000 direct LEYZU and hold.

AWOS-3 118,325	JACKSONVILLE APP CON 118.6 251.15	UNICOM 122.725 (CTAF) 0
--------------------------	---	-----------------------------------



CATEGORY	A	B	C	D
LP MDA	380-1		371 (400-1)	
LNAV MDA	420-1	411 (500-1)	420-1 1/8	411 (500-1 1/8)
C CIRCLING	460-1 451 (500-1)	540-1 531 (600-1)	760-2 1/4 751 (800-2 1/4)	880-2 3/4 871 (900-2 3/4)

MIRL Rwy 9-27 **0**
REIL Rlys 9 and 27 **0**

SE-3, 25 FEB 2021 to 25 MAR 2021

SE-3, 25 FEB 2021 to 25 MAR 2021