

WAAS CH 56627 W19A	APP CRS 187°	Rwy Idg TDZE Apt Elev	6502 130 130
--	------------------------	-----------------------------	---

RNAV (GPS) RWY 19

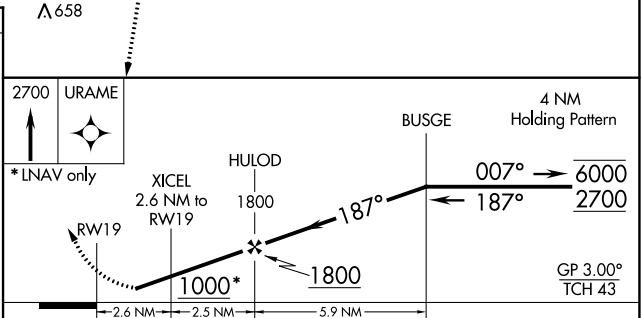
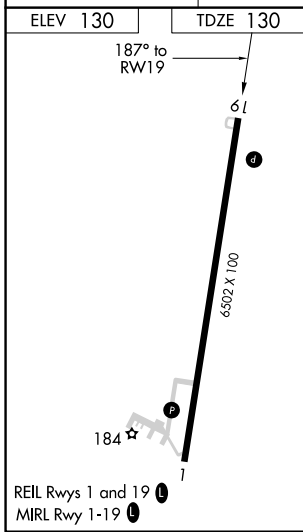
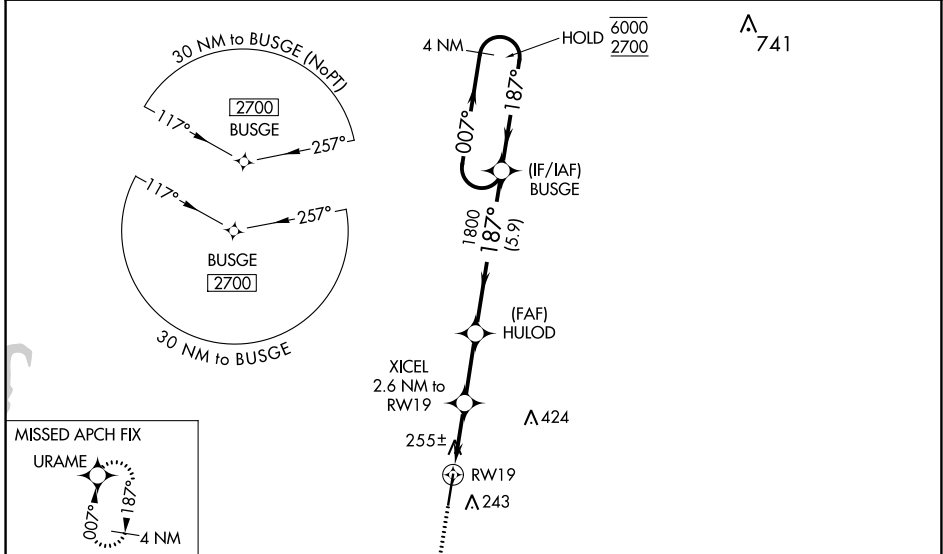
HARRELL FIELD (CDH)

RNP APCH.

⚠ Rwy 19 helicopter visibility reduction below ¾ SM NA. Baro-VNAV NA when using El Dorado altimeter setting. For uncompensated Baro-VNAV systems, LNAV/VNAV NA below -15°C or above 54°C. When local altimeter setting not received, use El Dorado altimeter setting and increase all DA/MDA 80 feet, and visibility LPV all CATs ½ SM and LNAV Cats C and D ¼ SM.

MISSED APPROACH: Climb to 2700 direct URAME and hold.

AWOS-3 125.2	FORT WORTH CENTER 128.2 269.1	UNICOM 122.7 (CTAF) 0
------------------------	---	---------------------------------



CATEGORY	A	B	C	D
LPV DA		440-1	310 (400-1)	
LNAV/VNAV DA		426-1	296 (300-1)	
LNAV MDA	520-1	390 (400-1)	520-1½	390 (400-1½)
CIRCLING	560-1 430 (500-1)	580-1 450 (500-1)	580-1½ 450 (500-1½)	680-2 550 (600-2)

SC-1, 25 FEB 2021 to 25 MAR 2021

SC-1, 25 FEB 2021 to 25 MAR 2021