

WAAS CH <b>78227</b> <b>W01A</b>	APP CRS <b>007°</b>	Rwy Idg TDZE Apt Elev	<b>6502</b> <b>124</b> <b>130</b>
--	------------------------	-----------------------------	---

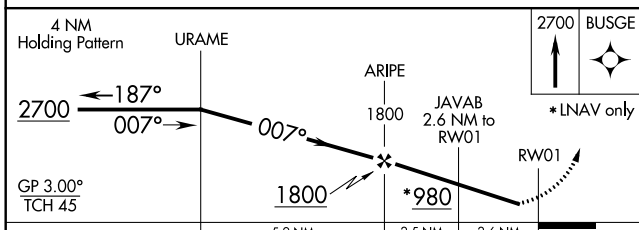
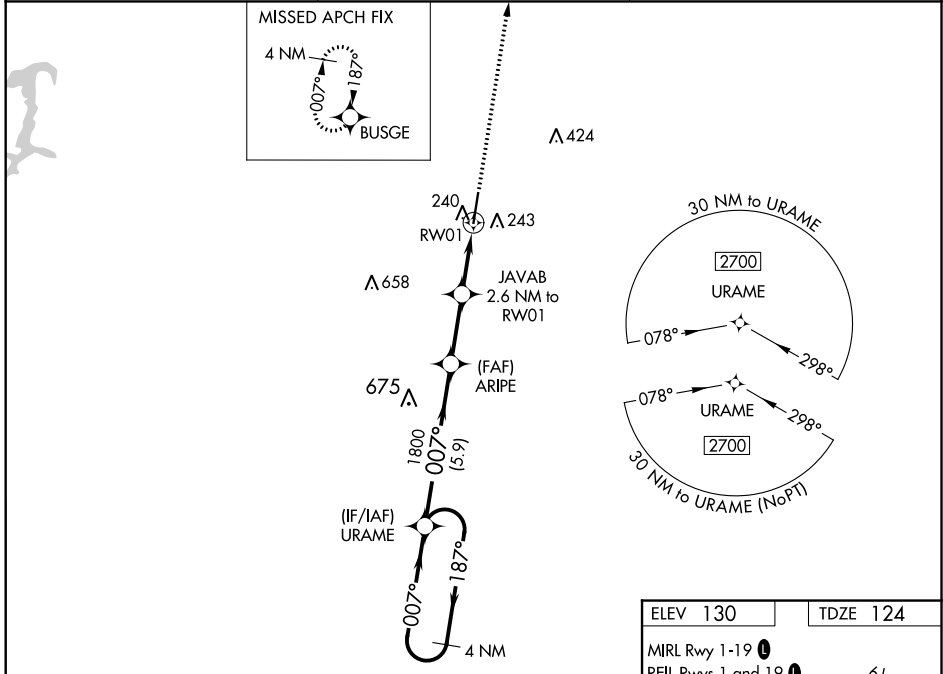
# RNAV (GPS) RWY 1

HARRELL FIELD (CDH)

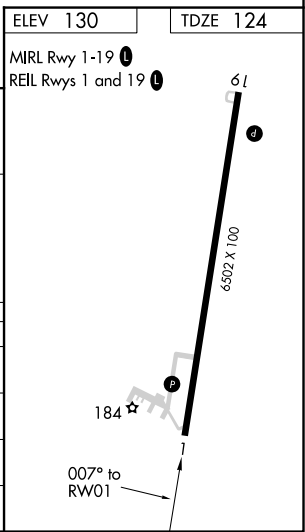
**⚠** Baro-VNAV NA when using El Dorado altimeter setting. For uncompensated Baro-VNAV systems, LNAV/VNAV NA below -15°C (5°F) or above 43°C (109°F). DME/DME RNP-0.3 NA. Visibility reduction by helicopters NA. When local altimeter setting not received, use El Dorado altimeter setting and increase all DA/MDA 80 feet, LPV and LNAV/VNAV all Cats visibility ¼ mile and LNAV Cats C and D visibility ⅜ mile. When VGSi inop, Straight-in/Circling Rwy 1 procedure NA at night. When VGSi inop, Circling Rwy 19 NA at night.

**MISSED APPROACH:** Climb to 2700 direct BUSGE and hold.

AWOS-3 <b>125.2</b>	FORT WORTH CENTER <b>128.2 269.1</b>	UNICOM <b>122.7 (CTAF) 0</b>
------------------------	---	---------------------------------



CATEGORY	A	B	C	D
LPV DA		430-1	306 (300-1)	
LNAV/VNAV DA		422-1	298 (300-1)	
LNAV MDA		500-1	376 (400-1)	
CIRCLING	560-1 430 (500-1)	580-1 450 (500-1)	580-1½ 450 (500-1½)	680-2 550 (600-2)



SC-1, 25 FEB 2021 to 25 MAR 2021

SC-1, 25 FEB 2021 to 25 MAR 2021