

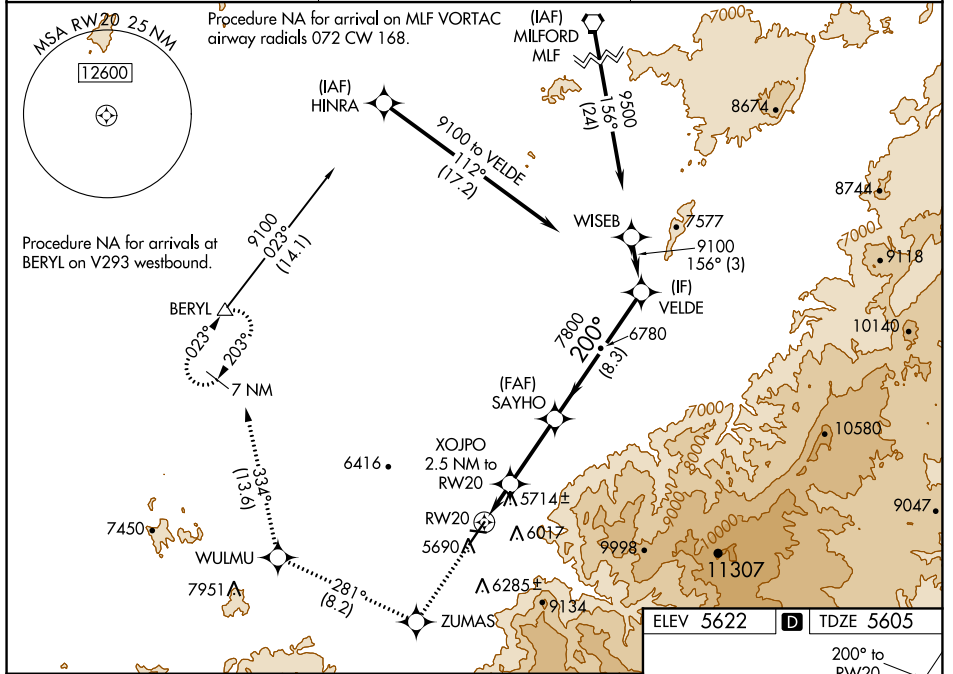
WAAS CH <b>72640</b> <b>W20A</b>	APP CRS <b>200°</b>	Rwy Idg TDZE Apt Elev	<b>8653</b> <b>5605</b> <b>5622</b>
--	------------------------	-----------------------------	---

# RNAV (GPS) RWY 20

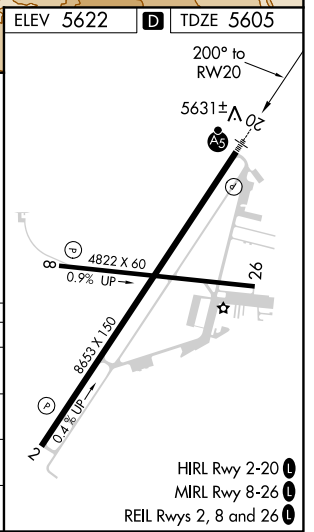
CEDAR CITY RGNL (CDC)

RNP APCH.	MALSR 	MISSED APPROACH: Climb to 9800 direct ZUMAS and on track 281° to WULMU and on track 334° to BERYL and hold.
<p><b>⚠</b> Circling NA east of Rwy 2-20. For uncompensated Baro-VNAV systems, LNAV/VNAV NA below -19°C or above 54°C. For inop ALS, increase LNAV/VNAV all Cats visibility to 1½ SM and LNAV Cats C/D visibility to 1½ SM.</p>		

ASOS <b>119.025</b>	SALT LAKE CITY CENTER <b>125.575 379.275</b>	UNICOM <b>123.0 (CTAF) 0</b>
------------------------	---	---------------------------------



9800	ZUMAS	WULMU	BERYL	SAYHO	VELDE
	tr 281°	tr 334°			
*LNAV only		XOJPO 2.5 NM to RW20		7800	9100
RW20		*1.6 NM to RW20		6440*	GP 3.00° TCH 47
-1.6 NM		0.9 NM		4.3 NM	8.3 NM



CATEGORY	A	B	C	D
LPV DA		5825-½	220 (300-½)	
LNAV/VNAV DA		6015-¾	410 (400-¾)	
LNAV MDA	6180-½	575 (600-½)	6180-¼	575 (600-¼)
<b>C</b> CIRCLING	6180-1	558 (600-1)	6180-1½	6180-2
			558 (600-1½)	558 (600-2)

SW-4, 25 FEB 2021 to 25 MAR 2021

SW-4, 25 FEB 2021 to 25 MAR 2021