

COLUMBUS, MISSISSIPPI

RNAV (GPS) RWY 31C

APCH CRS 315°	Rwy Idg 12,004
	TDZE 213
	Arpt Elev 218

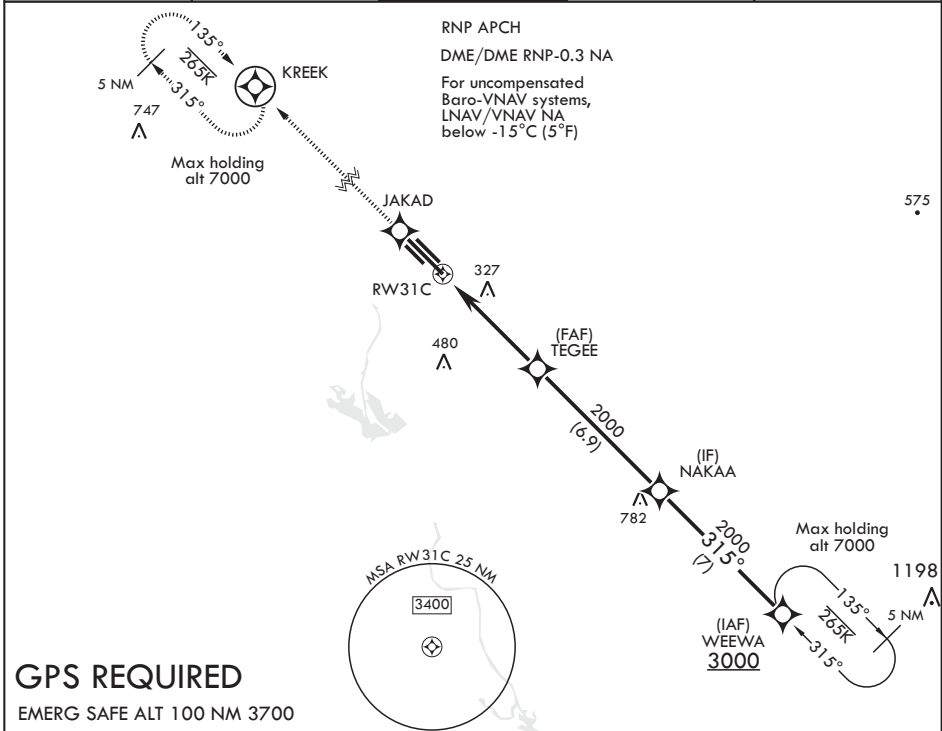
AL-91 (USAF)

COLUMBUS AFB (KCBM)

▼ * When ALS inop, increase vis to 1 1/4 miles.
 ** When ALS inop, increase CAT AB RVR to 55, vis to 1 mile;
 CAT CDE vis to 1 3/4 miles.

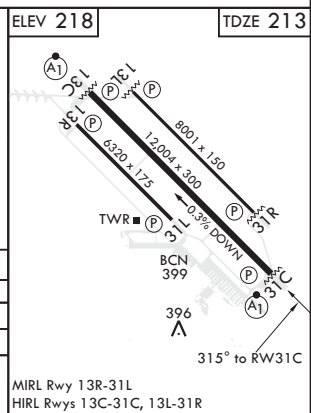
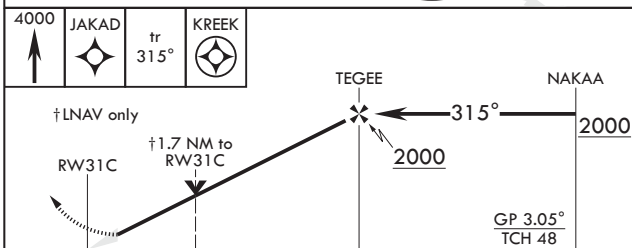
ALSF-1 MISSED APPROACH: Climb to 4000 direct JAKAD, direct KREEK and hold.

ATIS 115.2 273.5	APP CON 126.075 239.25 N 134.55 350.3 SE 135.6 323.275 SW	TOWER 126.65 379.925	GND CON 121.9 275.8	CLNC DEL 269.55
---------------------	--	-------------------------	------------------------	--------------------



GPS REQUIRED

EMERG SAFE ALT 100 NM 3700



CATEGORY	A	B	C	D	E
LNAV/VNAV DA*	640/40		427	(500-3/4)	
LNAV MDA**	800/24 587 (600-1/2)		800-1 1/4	587	(600-1 1/4)
C CIRCLING	800-1 582 (600-1)		800-1 3/4 582 (600-1 3/4)	800-2 582 (600-2)	1240-3 1022 (1100-3)

COLUMBUS, MISSISSIPPI

33°39'N - 88°27'W

COLUMBUS AFB (KCBM)

Amdt 1 27FEB20

RNAV (GPS) RWY 31C

SC-4, 25 FEB 2021 to 25 MAR 2021

SC-4, 25 FEB 2021 to 25 MAR 2021