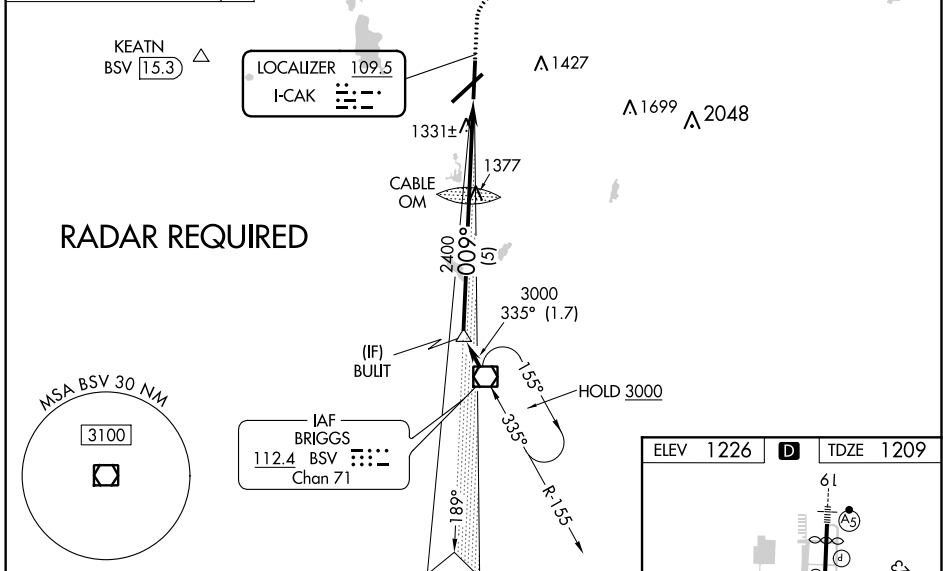
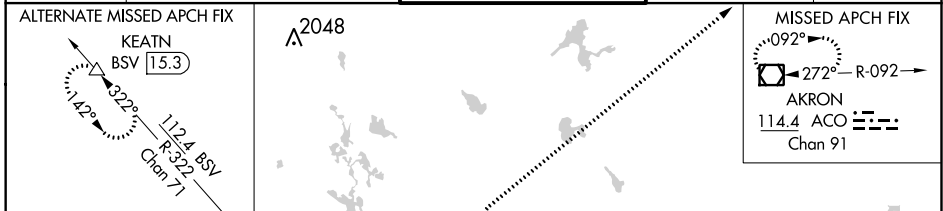


LOC I-CAK 109.5	APP CRS 009°	Rwy Idg TDZE Apt Elev	7007 1209 1226
---------------------------	------------------------	-----------------------------	---

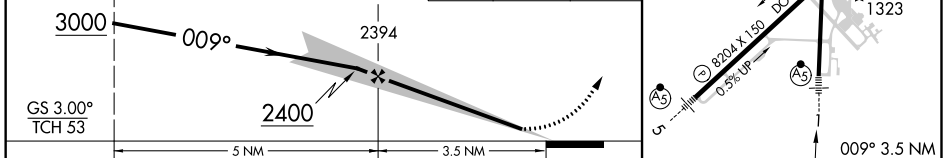
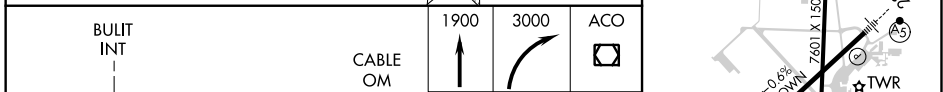
ILS or LOC RWY 1
AKRON-CANTON RGNL (CAK)

▽ ** RVR 1800 authorized with the use of FD or AP or HUD to DA.	MALSR 	MISSED APPROACH: Climb to 1900 then climbing right turn to 3000 direct ACO VOR/DME and hold.
--	-----------	--

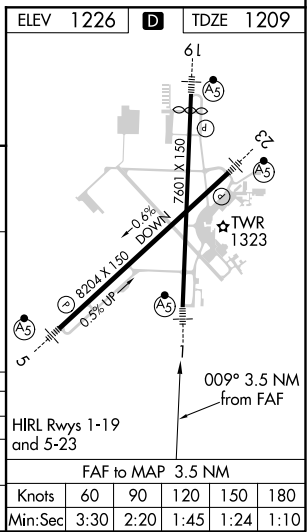
ATIS 121.05	CLEVELAND APP CON * 125.5 269.25	AKRON-CANTON TOWER 134.75 279.575	GND CON 121.7 348.6	CLNC DEL 132.05
-----------------------	--	---	-------------------------------	---------------------------



RADAR REQUIRED



CATEGORY	A	B	C	D
S-ILS 1 **	1409/24 200 (200-½)			
S-LOC 1	1600/24 391 (400-½)		1600/40 391 (400-¾)	
CIRCLING	1760-1 534 (600-1)	1760-1½ 534 (600-1½)	1780-2 554 (600-2)	



EC-2, 25 FEB 2021 to 25 MAR 2021

EC-2, 25 FEB 2021 to 25 MAR 2021