

WAAS CH <b>86413</b> <b>W07A</b>	APP CRS <b>070°</b>	Rwy Idg <b>5000</b> TDZE <b>1307</b> Apt Elev <b>1307</b>
--	------------------------	---

# RNAV (GPS) RWY 7

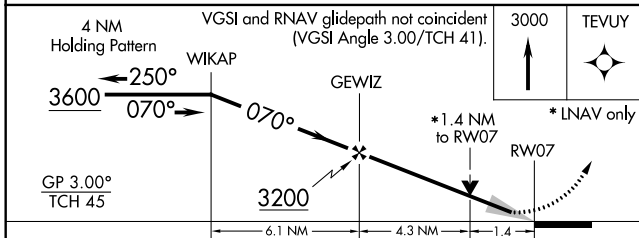
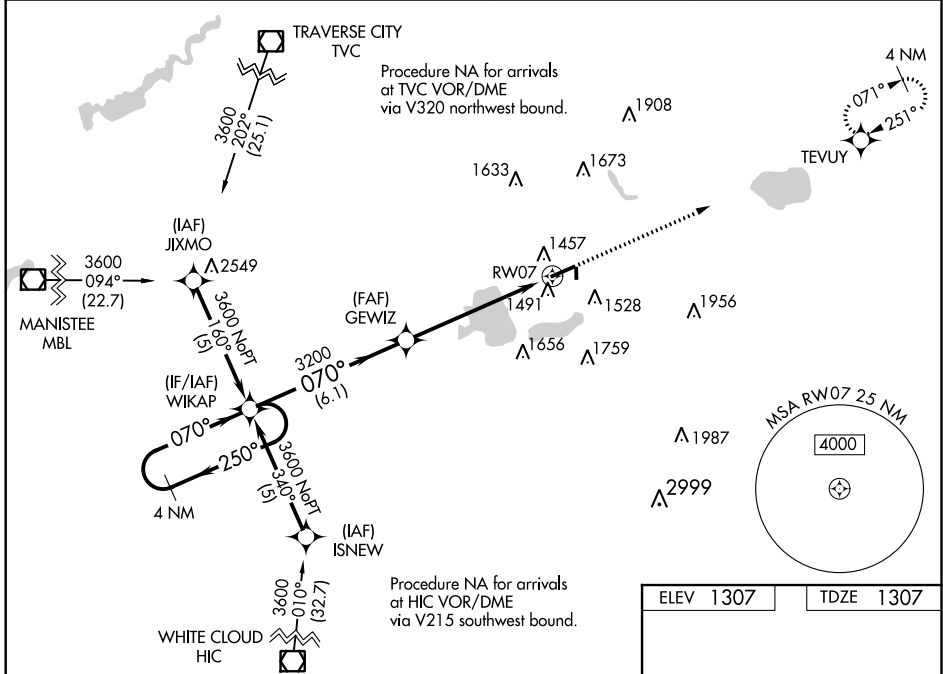
WEXFORD COUNTY (CAD)

**⚠ DME/DME RNP-0.3 NA.** When local altimeter setting not received, use Houghton Lake altimeter setting and increase all DA 137 feet and all MDA 140 feet, LPV and LNAV/VNAV visibility ½ mile all Cats, LNAV Cats C/D visibility ½ mile, Circling Cat C visibility ½ mile and Cat D visibility ¼ mile. Inop table does not apply to LNAV Cat C visibilities. For uncompensated Baro-VNAV systems, LNAV/VNAV NA below -17°C (2°F) or above 46°C (114°F). Baro-VNAV and VDP NA when using Houghton Lake altimeter setting.

**MALSF**

**MISSED APPROACH:**  
Climb to 3000 direct TEVUY and hold.

AWOS-3 <b>128.325</b>	MINNEAPOLIS CENTER <b>132.9 338.3</b>	GCO <b>121.725</b>	UNICOM <b>122.8 (CTAF) 0</b>
--------------------------	--	-----------------------	---------------------------------



ELEV 1307	TDZE 1307
-----------	-----------

2006 X 150  
50' Obstacle Clearance

070° to RW07

HIRL Rwy 7-25 0  
REIL Rwy 7 and 25 0

CATEGORY	A	B	C	D
LPV DA		1507-¾	200 (200-¾)	
LNAV/VNAV DA		1761-1½	454 (500-1½)	
LNAV MDA	1780-¾ 473 (500-¾)		1780-1¼ 473 (500-1¼)	1780-1½ 473 (500-1½)
CIRCLING	1900-1 593 (600-1)		1900-1½ 593 (600-1½)	1900-2 593 (600-2)

EC-1, 25 FEB 2021 to 25 MAR 2021

EC-1, 25 FEB 2021 to 25 MAR 2021