

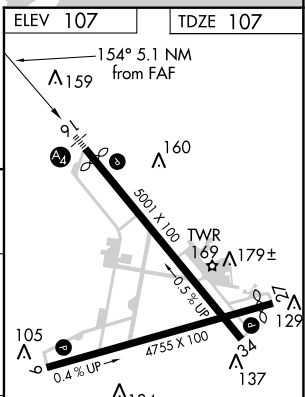
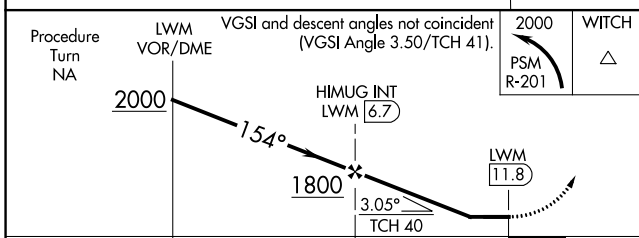
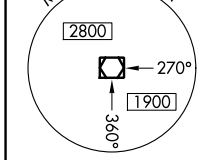
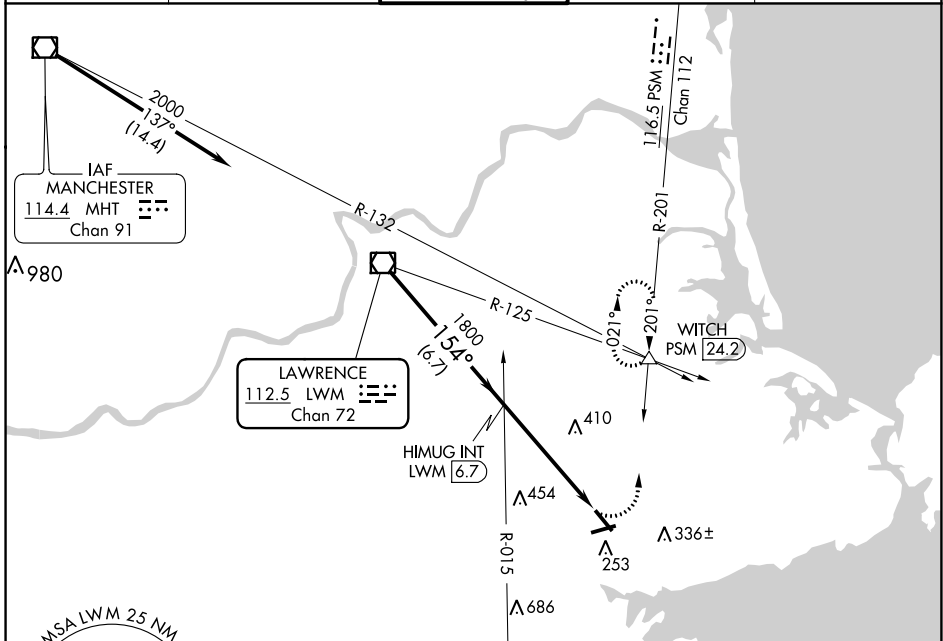
VOR/DME LWM <b>112.5</b> Chan 72	APP CRS <b>154°</b>	Rwy Idg <b>4762</b> TDZE <b>107</b> Apt Elev <b>107</b>
--	------------------------	---

# VOR RWY 16

BEVERLY RGNL (BVY)

<p><b>⚠</b> Inop table does not apply. When local altimeter setting not received, use Lawrence altimeter setting; increase all MDA 40 feet and Circling visibility Cats C and D 1/2 SM. Circling Rwy 9 NA at night. Rwy 16 helicopter visibility reduction below 3/4 SM NA. Rwy 9 helicopter visibility reduction below 1 SM NA.</p>	<p>MALS </p>	<p>MISSED APPROACH: Climbing left turn to 2000 via PSM R-201 to WITCH INT/24.2 DME and hold.</p>
--	--------------	--

ATIS <b>119.2</b>	BOSTON APP CON <b>124.4 279.6</b>	BEVERLY TOWER ★ <b>125.2</b> (CTAF) <b>0</b>	GND CON <b>121.6</b>	UNICOM <b>122.95</b>
----------------------	--------------------------------------	---	-------------------------	-------------------------



CATEGORY	A	B	C	D
S-16	720-1 613 (700-1)	720-1 613 (700-1)	720-1 1/4 613 (700-1 1/4)	720-2 613 (700-2)
<b>C</b> CIRCLING	720-1 613 (700-1)	820-2 713 (800-2)	880-2 1/2 773 (800-2 1/2)	

REIL Rwy 34 <b>0</b>	MIRL Rwy 9-27 and 16-34 <b>0</b>
FAF to MAP 5.1 NM	
Knots	60 90 120 150 180
Min:Sec	5:06 3:24 2:33 2:02 1:42

NE-1, 25 FEB 2021 to 25 MAR 2021

NE-1, 25 FEB 2021 to 25 MAR 2021