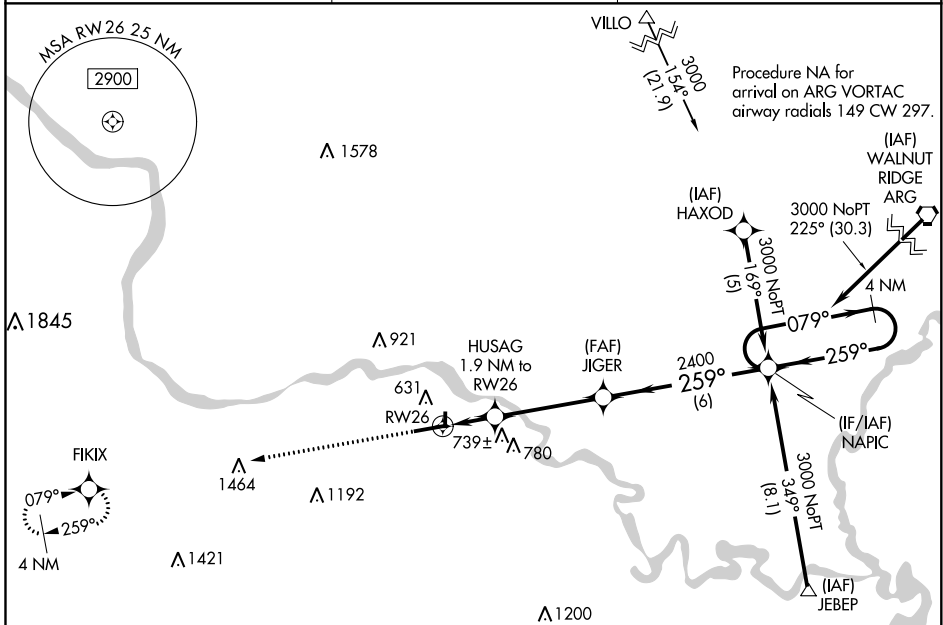


# RNAV (GPS) RWY 26

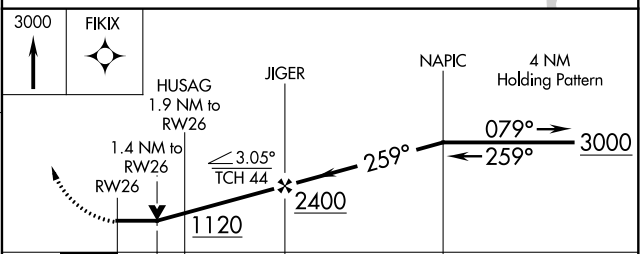
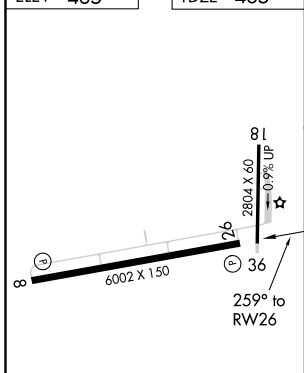
BATESVILLE RGNL (BVX)

|             |          |             |
|-------------|----------|-------------|
| APP CRS     | Rwy Idg  | <b>6002</b> |
| <b>259°</b> | TDZE     | <b>465</b>  |
|             | Apt Elev | <b>465</b>  |

|  |                      |   |
|--|----------------------|---|
| RNP APCH.  |                      | MISSED APPROACH: Climb to 3000 direct FIKIX and hold. |
| <p><b>▽</b> Circling NA N of Rwy 8-26.<br/> <b>▲</b> Rwy 26 helicopter visibility reduction below ¾ SM NA.</p> |                      |   |
| AWOS-3PT   | MEMPHIS CENTER       | UNICOM  |
| <b>126.375</b>   | <b>126.85 281.55</b> | <b>122.8 (CTAF) 0</b>                                 |



|          |          |
|----------|----------|
| ELEV 465 | TDZE 465 |
|----------|----------|



| CATEGORY | A     | B           | C                            | D                            |
|----------|-------|-------------|------------------------------|------------------------------|
| LNAV MDA | 940-1 | 475 (500-1) | 940-1 3/8<br>475 (500-1 3/8) | 940-1 1/2<br>475 (500-1 1/2) |
| CIRCLING | 980-1 | 515 (600-1) | 980-1 1/2<br>515 (600-1 1/2) | 1040-2<br>575 (600-2)        |

REIL Rwy 8 and 26 **0**  
 MIRL Rwy 8-26 **0**

BATESVILLE, ARKANSAS  
 Amdt 1B 03JAN19

35°44'N-91°39'W

# RNAV (GPS) RWY 26

SC-1, 25 FEB 2021 to 25 MAR 2021

SC-1, 25 FEB 2021 to 25 MAR 2021