


LOC I-BVO 111.3	APP CRS 176°	Rwy ldg 6201
		TDZE 694
		Apt Elev 717

LOC RWY 17

BARTLESVILLE MUNI (BVO)

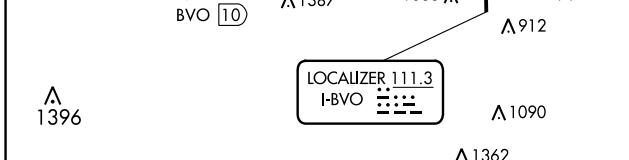
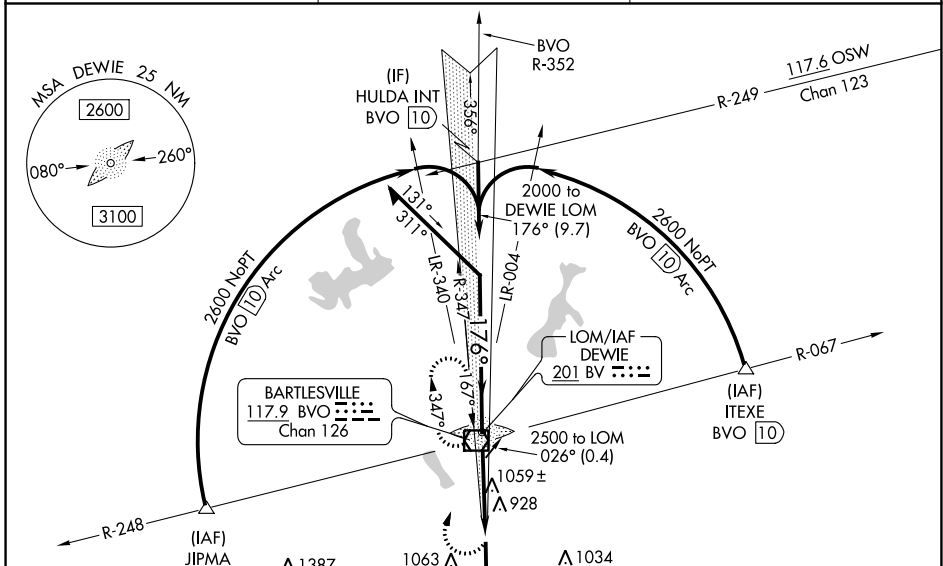
NA When local altimeter setting not received, use Tulsa Intl altimeter setting and increase all MDA 100 feet, increase S-17 and Circling Cat C visibility ¼ mile. For inop MALS, increase S-17 Cat A/B visibility to 1 mile and Cat C to 1 ¼ mile. For inop MALS when using Tulsa Intl altimeter setting, increase S-17 Cat A/B visibility to 1 mile and Cat C to 2 mile. Circling NA east of Rwy 17-35. Helicopter visibility reduction below ¾ SM NA.

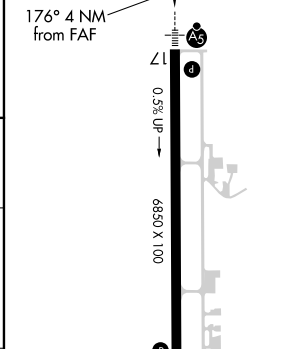
MALS  MISSED APPROACH: Climbing right turn to 2500 direct BVO VOR/DME and hold, continue climb-in-hold to 2500.

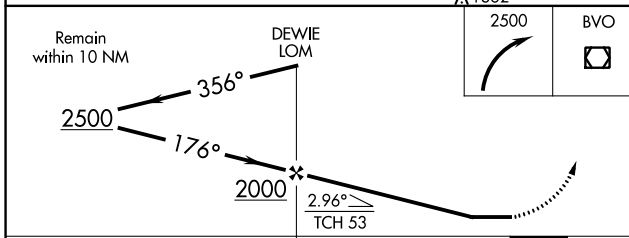
AWOS
132.675

KANSAS CITY CENTER
128.8 354.1

UNICOM
122.825 (CTAF) 0



ELEV 717	D TDZE 694
176° 4 NM from FAF	
	
MIRL Rwy 17-35 0	923 ☆
REL Rwy 35 0	35
FAF to MAP 4 NM	
Knots	60 90 120 150 180
Min:Sec	4:00 2:40 2:00 1:36 1:20



CATEGORY	A	B	C	D
S-17	1320-¾	626 (700-¾)	1320-1⅜ 626 (700-1⅜)	NA
C CIRCLING	1380-1	663 (700-1)	1400-2 683 (700-2)	NA

SC-1, 25 FEB 2021 to 25 MAR 2021

SC-1, 25 FEB 2021 to 25 MAR 2021