

VOR/DME BPT 114.5 Chan 92	APP CRS 359°	Rwy Idg 5070 TDZE 16 Apt Elev 16
---	------------------------	---

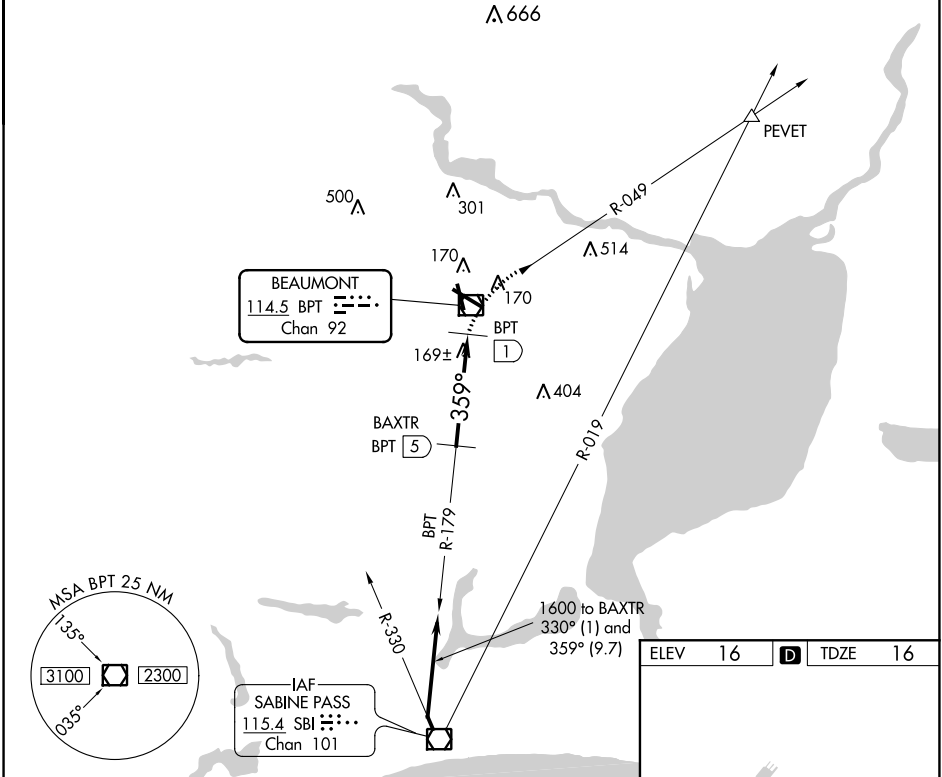
VOR/DME RWY 34

JACK BROOKS RGNL (BPT)

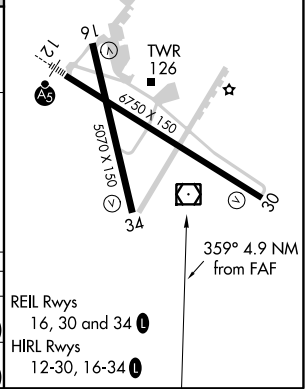
⚠ When local altimeter setting not received, use Orange County altimeter setting and increase all MDA 40 feet, increase S-34 visibility Cat C and D ¼ mile and Circling Cat E visibility ¼ mile.

⚠ MISSED APPROACH: Climb to 2000 via BPT VOR/DME R-049 to PEVET INT.

ATIS 126.3	HOUSTON APP CON 121.3 377.1	BEAUMONT TOWER* 119.5 (CTAF) 0	GND CON 124.85	CLNC DEL 118.3	UNICOM 122.95
----------------------	---------------------------------------	--	--------------------------	--------------------------	-------------------------



	BAXTR BPT 5		2000 PEVET BPT R-049		
Procedure Turn NA	1600 * 359°		BPT VOR/DME		
	2.97° TCH 50		BPT 1		
	4 NM		0.9 NM		
CATEGORY	A	B	C	D	E
S-34	500-1¼	484 (500-1¼)		500-1½ 484 (500-1½)	500-1¾ 484 (500-1¾)
CIRCLING	500-1¼	484 (500-1¼)	500-1½ 484 (500-1½)	580-2 564 (600-2)	820-2¾ 804 (900-2¾)



SC-5, 25 FEB 2021 to 25 MAR 2021

SC-5, 25 FEB 2021 to 25 MAR 2021