

WAAS CH <b>99715</b> <b>W12A</b>	APP CRS <b>116°</b>	Rwy Idg TDZE Apt Elev	<b>6750</b> <b>15</b> <b>15</b>
--	------------------------	-----------------------------	---------------------------------------

# RNAV (GPS) RWY 12

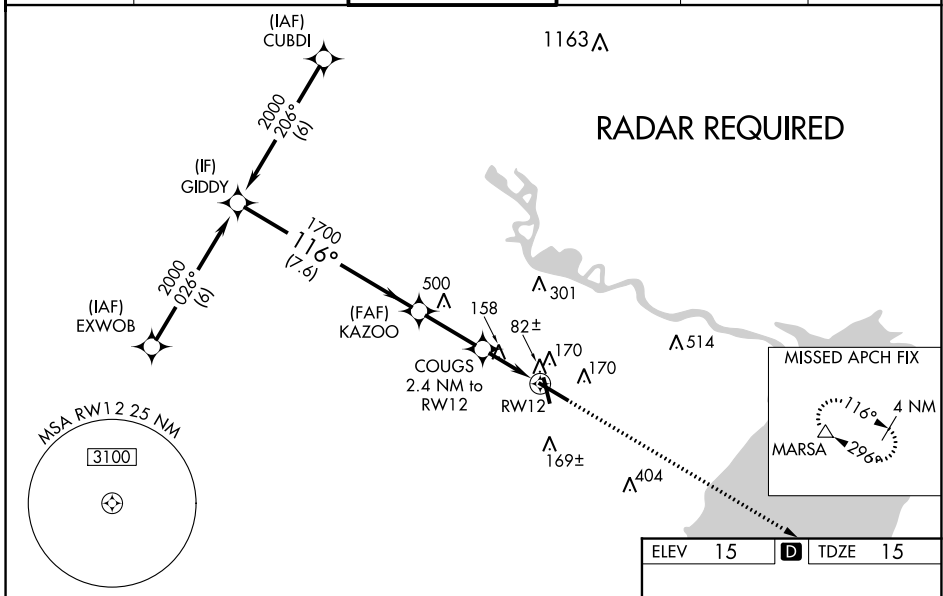
JACK BROOKS RGNL (BPT)

**▼** Baro-VNAV NA when using Orange County altimeter setting. For uncompensated Baro-VNAV systems, LNAV/VNAV NA below -15°C (5°F) or above 49°C (120°F), DME/DME RNP-0.3 NA. When local altimeter setting not received, use Orange County altimeter setting and increase all DA 32 feet and all MDA 40 feet, increase LNAV/VNAV Cat E, LNAV Cat E and Circling Cat E visibility ¼ mile. For inoperative MALSR, increase LPV Cat E visibility to RVR 4000, LNAV/VNAV Cat E to RVR 6000 and LNAV Cat E to 1½ miles. For inoperative MALSR when using Orange County altimeter setting, increase LPV Cat E visibility to RVR 4000, LNAV/VNAV Cat E to 1½ miles, and LNAV Cat E to 1¾ miles. VDP NA when using Orange County altimeter setting. \*\*RVR 1800 authorized with use of FD or AP or HUD to DA (NA when using Orange County altimeter setting).

**MALSR**

**MISSED APPROACH:**  
Climb to 3000 direct MARSAs and hold.

ATIS <b>126.3</b>	HOUSTON APP CON <b>121.3 377.1</b>	<b>BEAUMONT TOWER*</b> <b>119.5 (CTAF) 0</b>	GND CON <b>124.85</b>	CLNC DEL <b>118.3</b>	UNICOM <b>122.95</b>
----------------------	---------------------------------------	---	--------------------------	--------------------------	-------------------------



GIDDY Procedure Turn NA GP 3.00° TCH 52	2000 1700 820 3000 MARSAs *LNAV only.				
	7.6 NM	2.7 NM	1.2 NM	1.2 NM	
CATEGORY	A	B	C	D	E
LPV DA **	215/24		200 (200-½)		
LNAV/VNAV DA	375/40		360 (400-¾)		
LNAV MDA	460/24	445 (500-½)	460/40 445 (500-¾)	460/50	445 (500-1)
CIRCLING	480-1	465 (500-1)	480-1½ 465 (500-1½)	580-2 565 (600-2)	820-2¾ 805 (900-2¾)

ELEV 15	<b>D</b>	TDZE 15
---------	----------	---------

REIL Rwy 16, 30 and 34  
HIRL Rwy 12-30, 16-34

SC-5, 25 FEB 2021 to 25 MAR 2021

SC-5, 25 FEB 2021 to 25 MAR 2021