

WAAS CH 69300 W05A	APP CRS 049°	Rwy Idg 5000 TDZE 928 Apt Elev 928
--	------------------------	---

RNAV (GPS) RWY 5

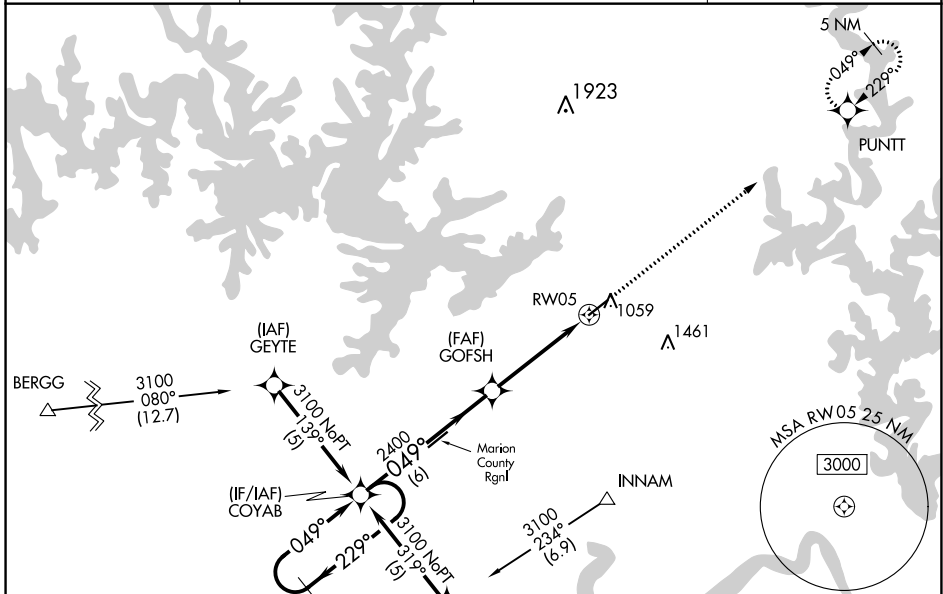
BAXTER COUNTY (BPK)

RNP APCH.

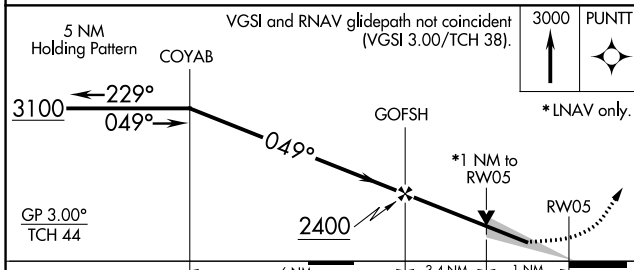
▼ For uncompensated Baro-VNAV systems, LNAV/VNAV NA below -16°C (4°F) or above 54°C (130°F). When local altimeter setting not received, use Flippin altimeter setting: increase LPV DA to 1261 feet, LNAV/VNAV DA to 1310 feet; increase all MDAs 60 feet and visibility LNAV Cat C 1/8 SM. Baro-VNAV NA when using Flippin altimeter setting. Circling NA for Cat C, SE of Rwy 5-23. Circling Rwy 23 NA at night.

MISSED APPROACH: Climb to 3000 direct PUNTT and hold.

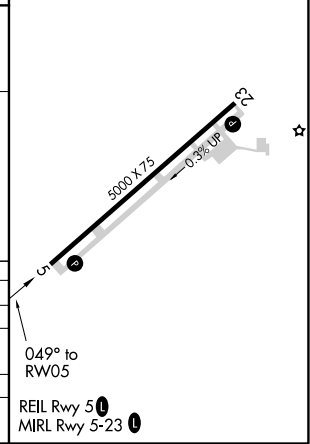
ASOS 133.975	MEMPHIS CENTER 126.85 281.55	GCO 121.72	UNICOM 123.0 (CTAF) 0
------------------------	--	----------------------	---------------------------------



ELEV 928	TDZE 928
----------	----------



CATEGORY	A	B	C	D
LPV DA		1201-1	273 (300-1)	NA
LNAV/VNAV DA		1250-1 1/4	322 (400-1 1/4)	NA
LNAV MDA		1280-1	352 (400-1)	NA
CIRCLING	1400-1	472 (500-1)	1420-1 1/2 492 (500-1 1/2)	NA



SC-1, 25 FEB 2021 to 25 MAR 2021

SC-1, 25 FEB 2021 to 25 MAR 2021