

WAAS CH 65803 W28B	APP CRS 282°	Rwy Idg 10000 TDZE 2871 Apt Elev 2871
--	------------------------	--

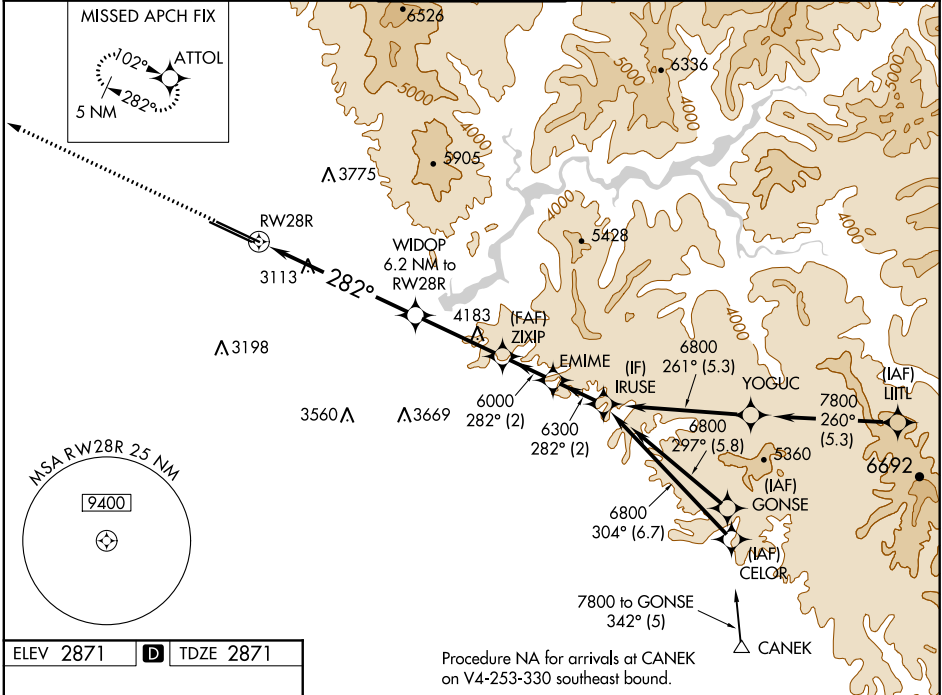
RNAV (GPS) Y RWY 28R

BOISE AIR TERMINAL/GOWEN FIELD (BOI)

⚠ For uncompensated Baro-VNAV systems, LNAV/VNAV NA below -12°C (11°F) or above 52°C (126°F).
Circling NA north of Rwy 10L-28R. DME/DME RNP-0.3 NA.

MISSED APPROACH: Climb to 6000 direct ATTOL and hold, continue climb-in-hold to 6000.

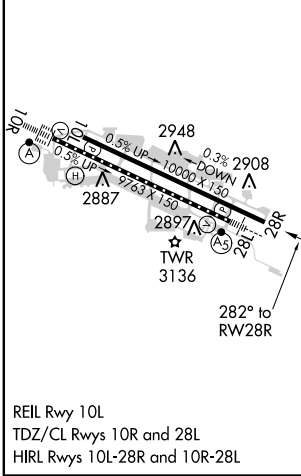
D-ATIS 123.9 290.4	BIG SKY APP CON 119.6 269.4	BOISE TOWER 118.1 257.8	GND CON 121.7 348.6	CLNC DEL 125.9 323.2
------------------------------	---------------------------------------	--	-------------------------------	--------------------------------



NW-1, 25 FEB 2021 to 25 MAR 2021

NW-1, 25 FEB 2021 to 25 MAR 2021

ELEV 2871	D TDZE 2871
-----------	--------------------



Procedure NA for arrivals at CANEK on V4-253-330 southeast bound.

6000	ATTOL	VGSi and RNAV glidepath not coincident (VGSi Angle 3.00/TCH 70).			
*LNAV only		WIDOP 6.2 NM to RW28R	ZIXIP 6000	EMIME 6300	IRUSE 6800
RW28R		2.3 NM	3.9 NM	3.5 NM	2 NM
2.3 NM		3.9 NM	3.5 NM	2 NM	2 NM
GP 3.00°	TCH 55				
CATEGORY	A	B	C	D	
LPV DA	DA	3121-3/4	250 (300-3/4)		
LNAV/VNAV DA	DA	3199-1	328 (400-1)		
LNAV MDA	3660-1 1/4	789 (800-1 1/4)	3660-2 1/2	789 (800-2 1/2)	
C CIRCLING	3660-1 1/4	789 (800-1 1/4)	3740-2 1/2	3820-3 949 (1000-3)	