

APP CRS	Rwy Idg	10000
102°	TDZE	2844
	Apt Elev	2872

RNAV (RNP) Z RWY 10L

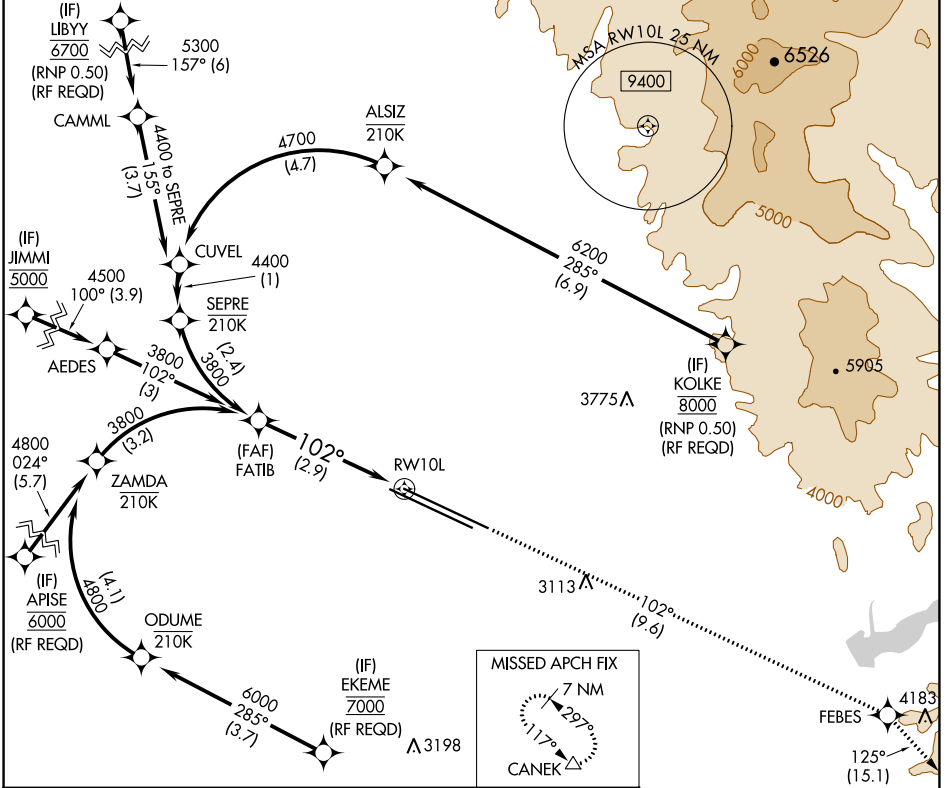
BOISE AIR TERMINAL/GOWEN FIELD (BOI)

RNP AR APCH.

▼ For uncompensated Baro-VNAV systems, procedure NA below -1.4°C or above 54°C.

MISSED APPROACH: Climb to 7300 on track 102° to FEBES and on track 125° to CANEK and hold.

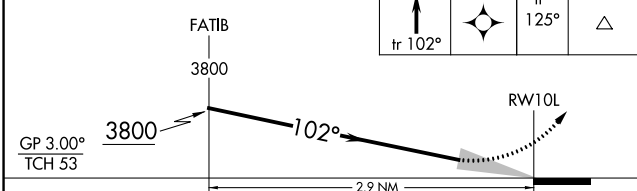
D-ATIS	BIG SKY APP CON	BOISE TOWER	GND CON	CLNC DEL
123.9 290.4	119.6 269.4	118.1 257.8	121.7 348.6	125.9 323.2



NW-1, 25 FEB 2021 to 25 MAR 2021

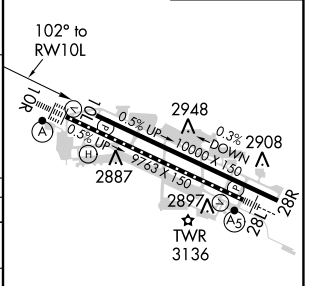
NW-1, 25 FEB 2021 to 25 MAR 2021

See planview for multiple IF locations.



CATEGORY	A	B	C	D
RNP 0.15 DA		3167-1 $\frac{1}{8}$	323 (300-1 $\frac{1}{8}$)	
RNP 0.30 DA		3219-1 $\frac{1}{4}$	375 (400-1 $\frac{1}{4}$)	

ELEV 2872	TDZE 2844
-----------	-----------



REIL Rwy 10L
 TDZ/CL Rwy 10R and 28L
 HIRL Rwy 10L-28R and 10R-28L