

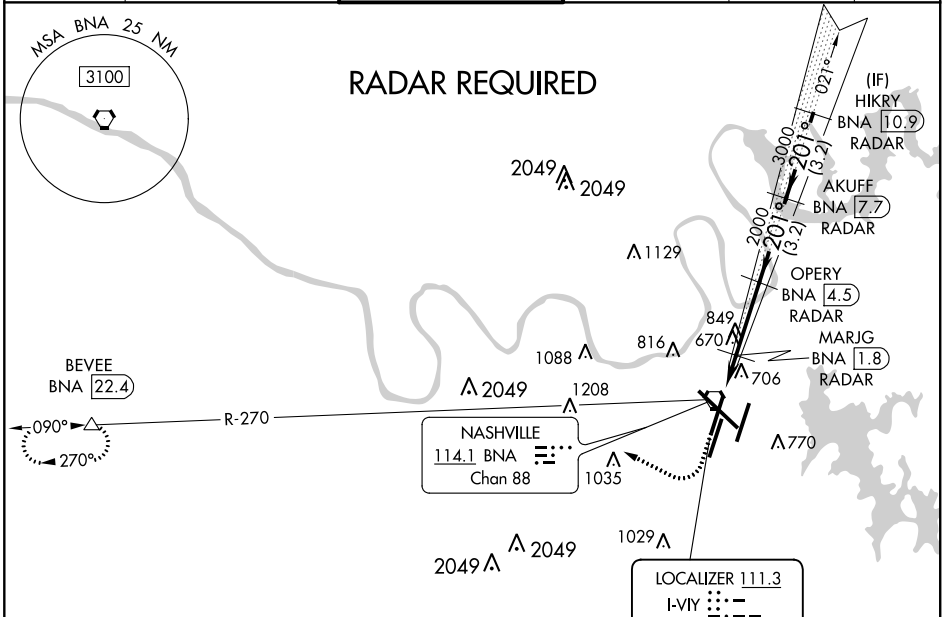
LOC I-VII 111.3	APP CRS 201°	Rwy Idg 20R 7702 20C 8001 TDZE 578 588 Apt Elev 599 599
---------------------------	------------------------	--

ILS or LOC RWY 20R

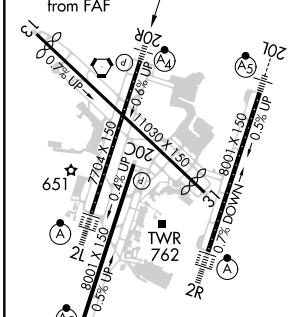
NASHVILLE INTL (BNA)

<p>⚠ Simultaneous approach authorized with Rwy 20L. DME or radar required. For inop ALS, increase S-LOC 20R Cat D visibility to 1/4 SM. DME from BNA VORTAC. Simultaneous reception of I-VII and BNA DME required.</p>	<p>MALSF</p>	<p>MISSED APPROACH: Climb to 1200 then climbing right turn to 4000 on heading 300° and on BNA VORTAC R-270 to BEVEE/BNA 22.4 DME and hold.</p>
---	---------------------	---

D-ATIS 135.1	NASHVILLE APP CON 118.4 360.7	NASHVILLE TOWER 118.6 257.8	GND CON 121.9 348.6	CLNC DEL 126.05	CPDLC
------------------------	---	---------------------------------------	-------------------------------	---------------------------	-------



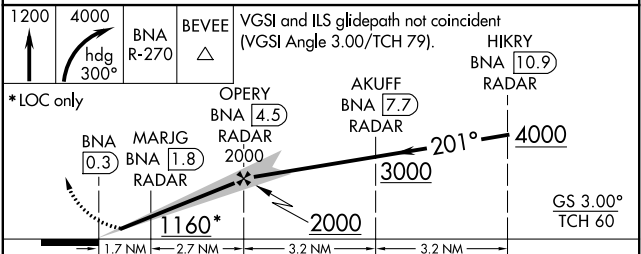
ELEV 599	D	TDZE 20C 588
		TDZE 20R 578



HIRL all Rwys
TDZ/CL Rwys 2L and 2R
REIL Rwys 13, 20C, and 31

FAF to MAP 4.4 NM

Knots	60	90	120	150	180
Min:Sec	4:24	2:56	2:12	1:46	1:28



CATEGORY	A	B	C	D
S-ILS 20R	778/40 200 (200-¾)			
S-LOC 20R	1000/40	422 (500-¾)	1000/50	422 (500-1)
SIDESTEP 20C	1000-1	412 (500-1)	1000-1½ 412 (500-1½)	1000-2 412 (500-2)
C CIRCLING	1100-1 501 (600-1)	1120-1 521 (600-1)	1200-1¾ 601 (700-1¾)	1380-2½ 781 (800-2½)