

LOC/DME I-BMI	APP CRS	Rwy Idg	6525
110.95	291°	TDZE	871
Chan 46 (Y)		Apt Elev	871

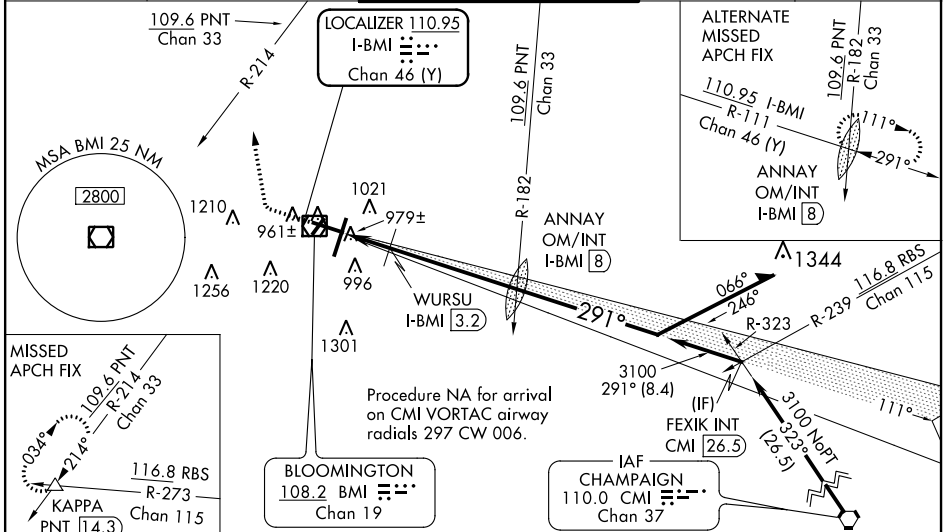
ILS or LOC RWY 29

CENTRAL IL RGNL ARPT AT BLOOMINGTON-NORMAL (BMI)

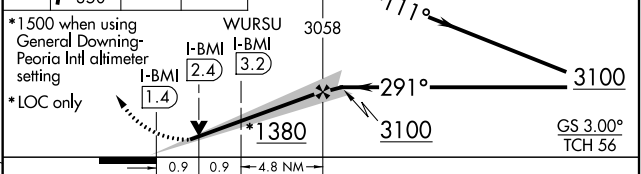
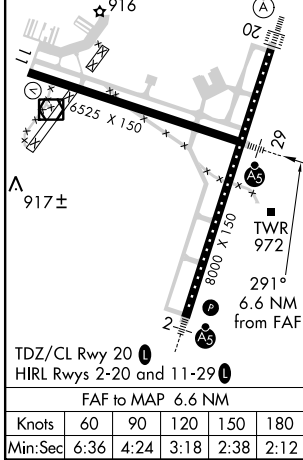
LOC minimums: For inop ALS, increase S-LOC 29 Cats C and D visibility to 1 3/8 SM; WURSU fix minimums: For inop ALS, increase S-LOC 29 visibility to RVR 5500. For inop ALS when using General Downning-Peoria Intl altimeter setting: increase S-ILS 29 visibility to RVR 4500; increase S-LOC 29 Cats C and D visibility to 1 3/4 SM; increase WURSU fix minimums S-LOC 29 Cats C and D visibility to 1 3/8 SM. **RVR 1800 authorized with use of FD or AP or HUD to DA. (NA when using General Downning-Peoria Intl altimeter setting).

MISSED APPROACH: Climb to 1500 then climbing right turn to 3000 on heading 350° and PNT VOR/DME R-214 to KAPPA INT/PNT 14.3 DME and hold.

ATIS 135.35	PEORIA APP CON 128.725 256.9	BLOOMINGTON TOWER * 124.6 (CTAF) 269.575	GND CON 121.65	UNICOM 122.95
------------------------------	---	---	---------------------------------	--------------------------------



ELEV 871	D TDZE 871	1500	3000	PNT R-214	KAPPA	ANNAY OM/INT I-BMI [8]	Remain within 10 NM
----------	-------------------	------	------	-----------	-------	------------------------	---------------------



CATEGORY	A	B	C	D
S-ILS 29 **	1071/24 200 (200-1/2)			
S-LOC 29	1380/24	509 (600-1/2)	1380/55	509 (600-1)
C CIRCLING	1380-1	509 (600-1)	1620-2 1/4 749 (800-2 1/4)	1620-2 1/2 749 (800-2 1/2)
WURSU FIX MINIMUMS				
S-LOC 29	1240/24	369 (400-1/2)	1240/40	369 (400-3/4)
C CIRCLING	1340-1	469 (500-1)	1620-2 1/4 749 (800-2 1/4)	1620-2 1/2 749 (800-2 1/2)

ILS or LOC RWY 29

EC-3, 25 FEB 2021 to 25 MAR 2021

EC-3, 25 FEB 2021 to 25 MAR 2021