

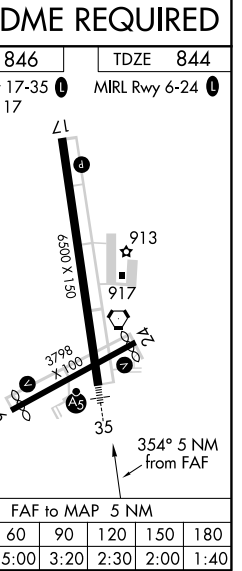
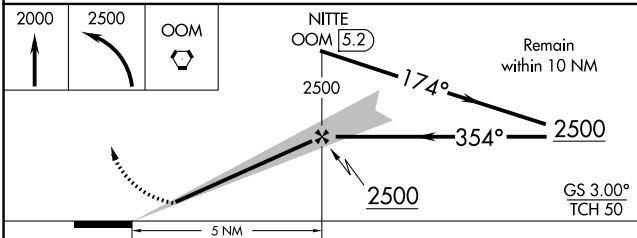
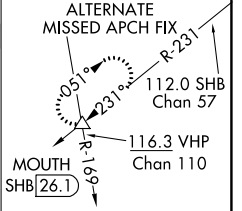
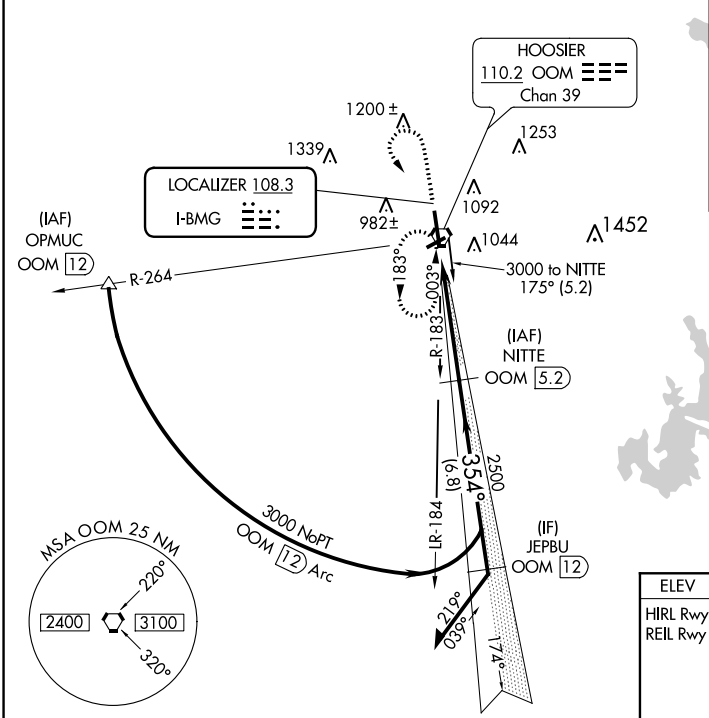
ILS or LOC/DME RWY 35 MONROE COUNTY (BMG)

| | | | |
|---------------------------|------------------------|-----------------------------|---|
| LOC I-BMG 108.3 | APP CRS 354° | Rwy Idg TDZE Apt Elev | 6500 844 846 |
|---------------------------|------------------------|-----------------------------|---|

▼ Circling to Rwy 6/24 NA at night. When local altimeter setting not received, use Terre Haute Rgnl altimeter setting and increase all DA 121 feet and all MDA 140 feet and increase S-ILS 35 all Cats visibility 1/4 mile, S-LOC 35 Cat C, D and Circling Cat C visibility 1/2 mile and Circling Cat D visibility 1/4 mile. For inoperative MALSR when using Terre Haute Rgnl altimeter setting: increase S-ILS 35 all Cats visibility to 1 1/4 miles. DME from OOM VORTAC. Simultaneous reception of I-BMG and OOM DME required.

MALSR
AS
MISSED APPROACH: Climb to 2000 then climbing left turn to 2500 direct OOM VORTAC and hold.

| | | | | |
|------------------------|--|--|-------------------------|-------------------------|
| ASOS 134.525 | HULMAN APP CON 128.025 339.8 | BLOOMINGTON TOWER ★ 120.775 (CTAF) 0 | GND CON 121.9 | UNICOM 122.95 |
|------------------------|--|--|-------------------------|-------------------------|



| CATEGORY | A | B | C | D |
|----------|------------------------|------------------------|------------------------|------------------------|
| S-ILS 35 | 1044-1/2 200 (200-1/2) | | | |
| S-LOC 35 | 1420-1/2 576 (600-1/2) | 1420-1 576 (600-1) | 1420-1 576 (600-1 1/4) | 1420-1 576 (600-1 1/4) |
| CIRCLING | 1420-1 574 (600-1) | 1420-1 574 (600-1 1/2) | 1420-1 574 (600-2) | 1420-2 574 (600-2) |

| | | | | | |
|-----------------|------|------|------|------|------|
| FAF to MAP 5 NM | | | | | |
| Knots | 60 | 90 | 120 | 150 | 180 |
| Min:Sec | 5:00 | 3:20 | 2:30 | 2:00 | 1:40 |

EC-2, 25 FEB 2021 to 25 MAR 2021

EC-2, 25 FEB 2021 to 25 MAR 2021