

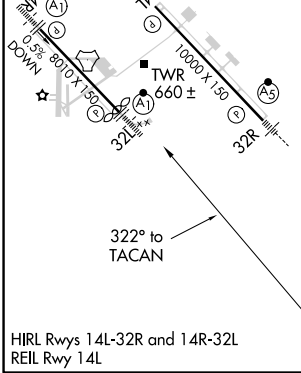
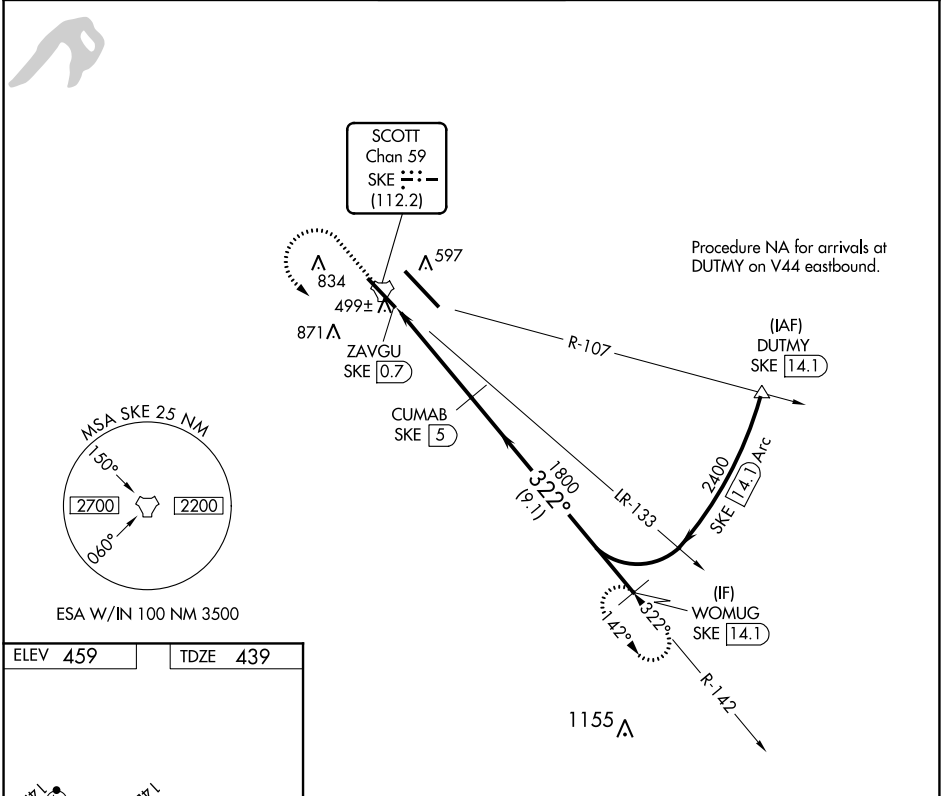
TACAN SKE Chan 59 (112.2)	APP CRS 322°	Rwy ldg TDZE 439 Apt Elev 459
--	------------------------	---

TACAN RWY 32L

SCOTT AFB/MIDAMERICA (BLV)

<p>For inop ALS, increase S-32L Cat C/D/E visibility to 1 3/8 SM.</p>		<p>MISSED APPROACH: Climb to 1500 then climbing left turn to 2400 on SKE R-142 to WOMUG/14.1 DME and hold.</p>

<p>ATIS ★ 128.7 256.7</p>	<p>ST LOUIS APP CON 125.2 281.5</p>	<p>SCOTT TOWER 128.25 253.5</p>	<p>GND CON 119.2 275.8</p>	<p>CLNC DEL 119.875 225.4 263.025</p>
--------------------------------------	--	--	---------------------------------------	--



ELEV 459	TDZE 439	<p>1500 2400 ↑ SKE R-142</p>		<p>WOMUG SKE [14.1]</p>	<p>VGSI and descent angles not coincident (VGSI Angle 3.00/TCH 50).</p>
		<p>CUMAB SKE [5]</p>	<p>WOMUG SKE [14.1]</p>		
<p>1.3 NM 3 NM 9.1 NM</p>					
CATEGORY	A	B	C	D	E
S-32L	920/24	481 (500-1/2)	920/50	481 (500-1)	920/60 481 (500-1 1/4)
<input checked="" type="checkbox"/> CIRCLING	1000-1 541 (600-1)	1080-1 621 (700-1)	1240-2 1/4 781 (800-2 1/4)	1240-2 1/2 781 (800-2 1/2)	1240-2 3/4 781 (800-2 3/4)

EC-3, 25 FEB 2021 to 25 MAR 2021

EC-3, 25 FEB 2021 to 25 MAR 2021