

WAAS CH 50518 W32A	APP CRS 319°	Rwy Idg 10000 TDZE 442 Apt Elev 459
--	------------------------	--

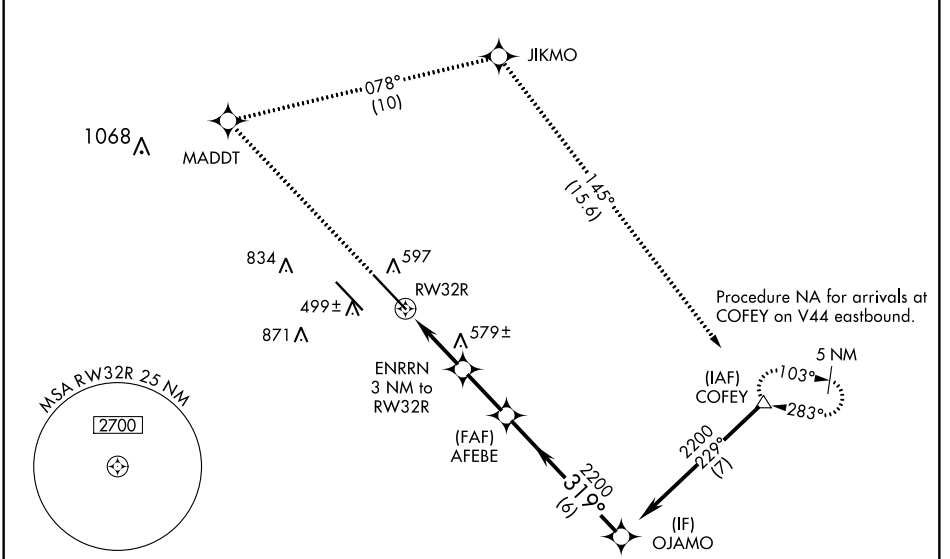
RNAV (GPS) RWY 32R

SCOTT AFB/MIDAMERICA (BLV)

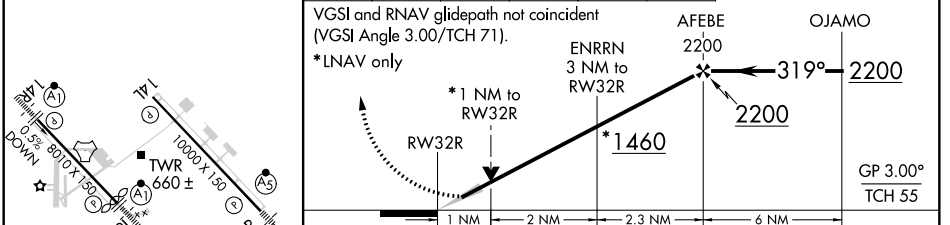
ASR For uncompensated Baro-VNAV systems, LNAV/VNAV NA below -18°C (0°F) or above 54°C (130°F). DME/DME RNP-0.3 NA. Baro-VNAV and VDP NA when using St Louis Downtown altimeter setting. When local altimeter setting not received, use St Louis Downtown altimeter setting: increase LPV DA to 684 feet and LNAV/VNAV DA to 846 feet and all MDA 60 feet; increase LNAV/VNAV all Cats visibility and LNAV Cat C/D visibility to RVR 4500; increase Circling Cat C/D visibility ¼ mile. For inoperative MALS, increase LNAV/VNAV all Cats visibility to RVR 6000.

MALS MISSED APPROACH: Climb to 2300 direct MADDT and right turn on track 078° to JIKMO and on track 145° to COFEY and hold.

ATIS ★ 128.7 256.7	ST LOUIS APP CON 125.2 281.5	SCOTT TOWER 128.25 253.5	GND CON 119.2 275.8	CLNC DEL 119.875 225.4 263.025
------------------------------	--	------------------------------------	-------------------------------	--



ELEV 459	TDZE 442	2300	MADDT	JIKMO	COFEY
			tr 078°	tr 145°	



CATEGORY	A	B	C	D
LPV DA	642/24 200 (200-1/2)			
LNAV/VNAV DA	804/40 362 (400-3/4)			
LNAV MDA	840/24	398 (400-1/2)	840/35	398 (400-5/8)
CIRCLING	1000-1 541 (600-1)	1080-1 621 (700-1)	1240-2 1/4 781 (800-2/4)	1240-2 1/2 781 (800-2/2)

EC-3, 25 FEB 2021 to 25 MAR 2021

EC-3, 25 FEB 2021 to 25 MAR 2021