

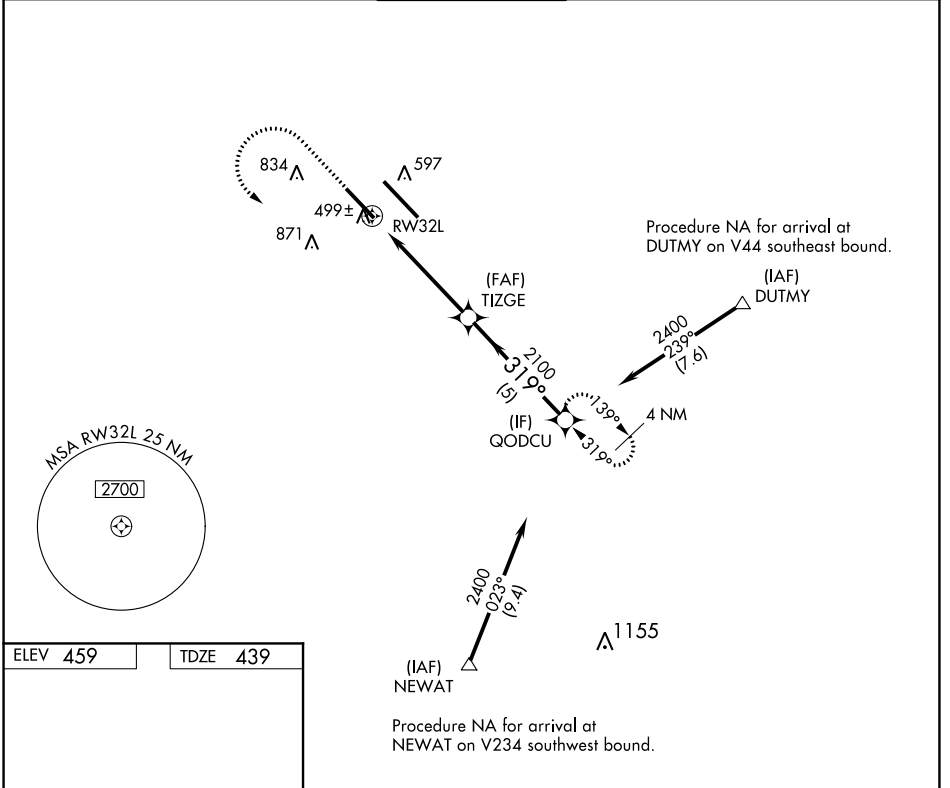
APP CRS <b>319°</b>	Rwy Idg <b>7801</b>
	TDZE <b>439</b>
	Apt Elev <b>459</b>

# RNAV (GPS) RWY 32L

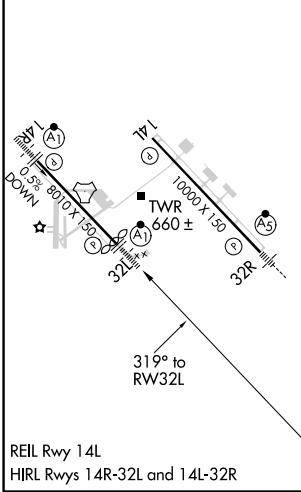
SCOTT AFB/MIDAMERICA (BLV)

	DME/DME RNP-0.3 NA. For inoperative ALSF-1, increase LNAV Cat C/D visibility to 1 1/8 mile.	ALSF-1 	MISSED APPROACH: Climb to 1500 then climbing left turn to 2400 direct QODCU and hold.

ATIS ★ <b>128.7 256.7</b>	ST LOUIS APP CON <b>125.2 281.5</b>	<b>SCOTT TOWER</b> <b>128.25 253.5</b>	GND CON <b>119.2 275.8</b>	CLNC DEL <b>119.875 225.4 263.025</b>
------------------------------	--	---	-------------------------------	--



ELEV 459	TDZE 439
----------	----------



			VGSI and descent angles not coincident (VGSI Angle 3.00/TCH 50).	
			QODCU	
CATEGORY	A	B	C	D
LNAV MDA	920/24	481 (500-1/2)	920/50	481 (500-1)
CIRCLING	1000-1 541 (600-1)	1080-1 621 (700-1)	1240-2 1/4 781 (800-2 1/4)	1240-2 1/2 781 (800-2 1/2)

EC-3, 25 FEB 2021 to 25 MAR 2021

EC-3, 25 FEB 2021 to 25 MAR 2021