

PLESS FIVE DEPARTURE

AL-46 (FAA)

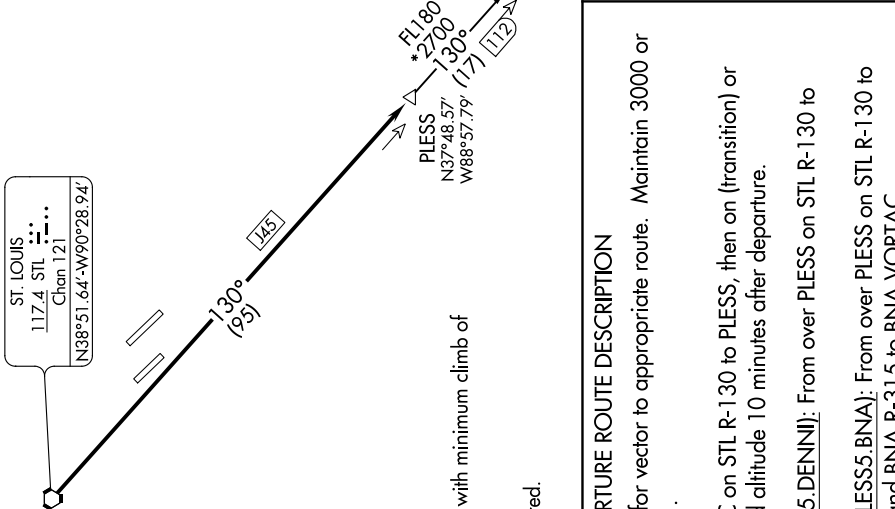
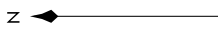
SCOTT AFB/MIDAMERICA (BLV)
BELLEVILLE, ILLINOIS

ATIS ★
128.7 256.7
CLINC DEL
113.3 PXY
119.875 225.4 263.025
GND CON
119.2 275.8
SCOTT TOWER
128.25 263.5
ST LOUIS DEP CON
125.2 281.5

POCKET CITY
113.3 PXY
Chen 80

NASHVILLE
114.1 BNA
Chen 88
N36°08.22'
W86°41.09'
L-16, H-6-9

ST. LOUIS
117.4 STL
Chen 121
N38°51.64'-W90°28.94'



**TOP ALTITUDE:
ASSIGNED BY ATC**

TAKEOFF MINIMUMS
Rwys 14L/R, 32R: Standard.
Rwy 32L: 300-1½ or standard with minimum climb of 250' per NM to 800.

NOTE: DME and RADAR required.

DEPARTURE ROUTE DESCRIPTION

Climb on assigned heading for vector to appropriate route. Maintain 3000 or assigned altitude, thence. . . .

. . . . from over STL VORTAC on STL R-130 to PLESS, then on (transition) or (assigned route). Expect filed altitude 10 minutes after departure.

DENNI TRANSITION (PLESS5.DENNI): From over PLESS on STL R-130 to DENNI.

NASHVILLE TRANSITION (PLESS5.BNA): From over PLESS on STL R-130 to DENNI, then on STL R-130 and BNA R-315 to BNA VORTAC.

NOTE: Chart not to scale.

PLESS FIVE DEPARTURE