

LINDBERGH SEVEN DEPARTURE

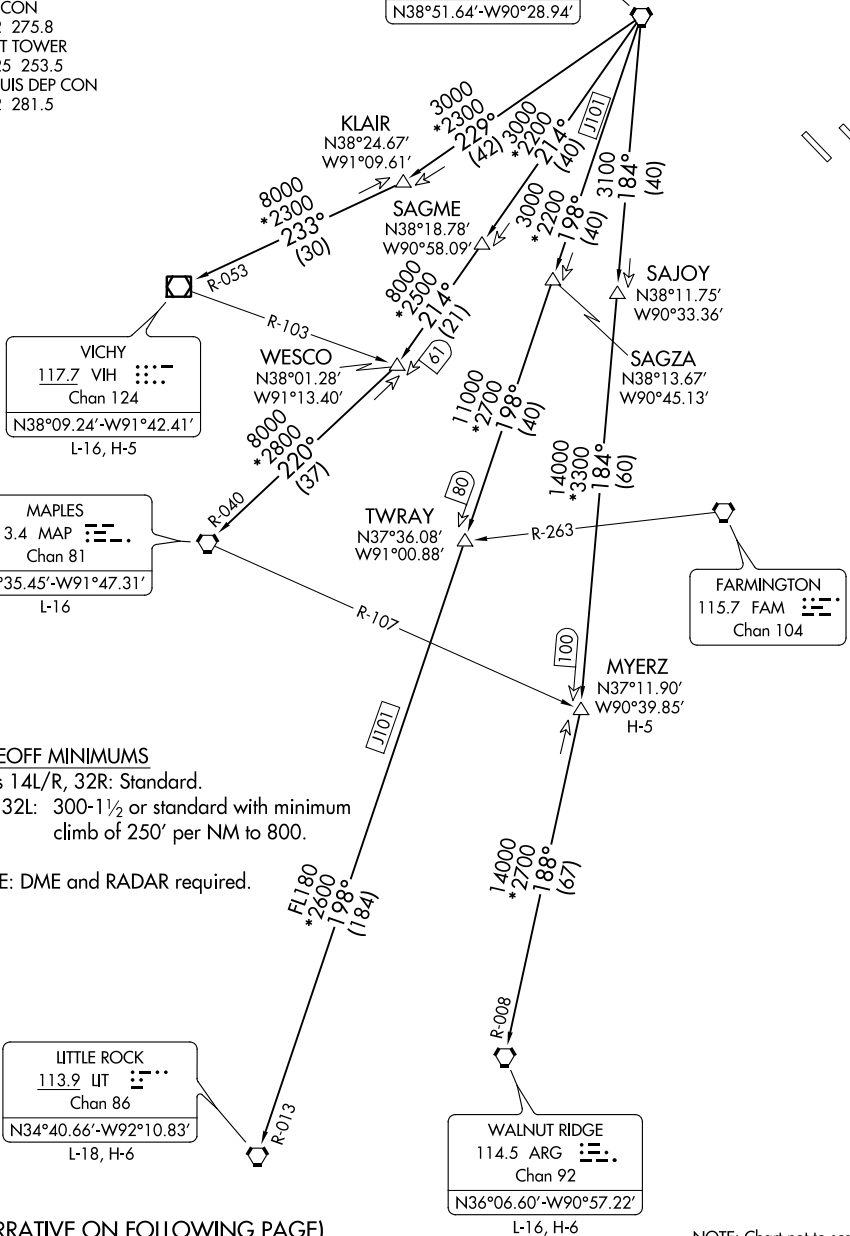
AL-46 (FAA)

SCOTT AFB/MIDAMERICA (B.L.V)
BELLEVILLE, ILLINOIS

ATIS ★
 128.7 256.7
 CLNC DEL
 119.875 225.4 263.025
 GND CON
 119.2 275.8
 SCOTT TOWER
 128.25 253.5
 ST LOUIS DEP CON
 125.2 281.5

ST LOUIS
 117.4 STL :--:
 Chan 121
 N38°51.64'-W90°28.94'

**TOP ALTITUDE:
 3000**



TAKEOFF MINIMUMS

Rwys 14L/R, 32R: Standard.
 Rwy 32L: 300-1½ or standard with minimum climb of 250' per NM to 800.

NOTE: DME and RADAR required.

(NARRATIVE ON FOLLOWING PAGE)

NOTE: Chart not to scale.

LINDBERGH SEVEN DEPARTURE

EC-3, 25 FEB 2021 to 25 MAR 2021

EC-3, 25 FEB 2021 to 25 MAR 2021