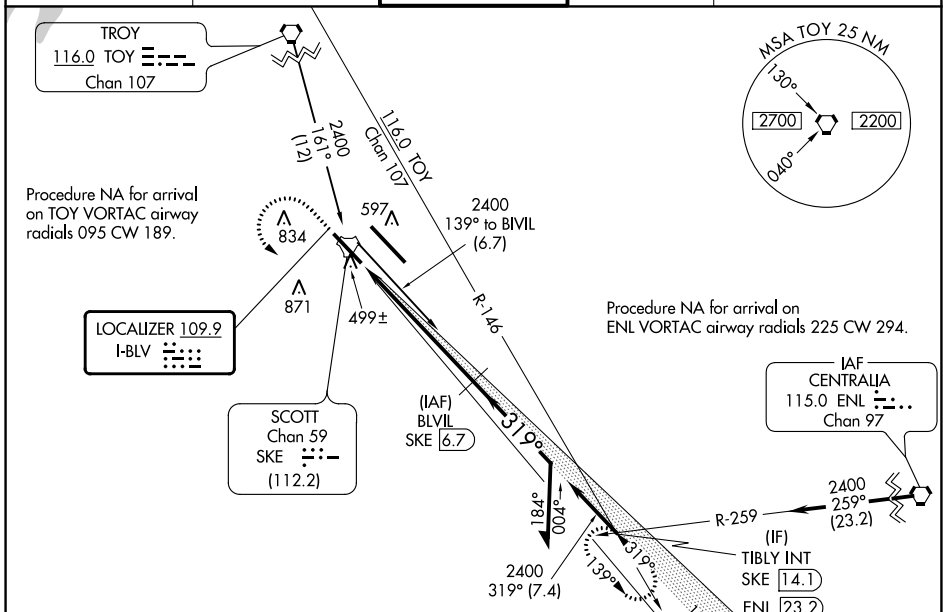


LOC I-BLV 109.9	APP CRS 319°	Rwy Idg TDZE Apt Elev	7801 439 459
---------------------------	------------------------	-----------------------------	---

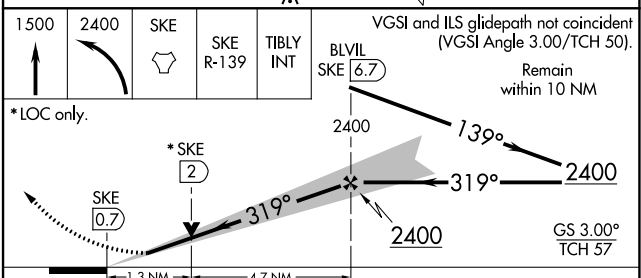
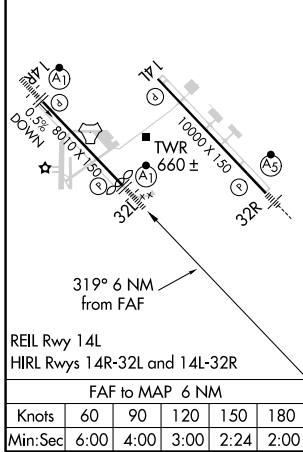
ILS or LOC RWY 32L

SCOTT AFB/MIDAMERICA (BLV)

DME required.		MISSED APPROACH: Climb to 1500 then climbing left turn to 2400 direct SKE TACAN and on SKE R-139 to TIBLY INT/ SKE 14.1 DME and hold.	
For inoperative ALS, increase S-ILS 32L Cat E visibility to RVR 4000 and increase S-LOC 32L Cat C/D/E visibility to 1 1/2 SM. Procedure turn not authorized for Cat E aircraft. DME from SKE TACAN. Simultaneous reception of I-BLV and SKE DME required. ** RVR 1800 authorized with use of FD or AP or HUD to DA.			
ATIS * 128.7 256.7	ST LOUIS APP CON 125.2 281.5	SCOTT TOWER 128.25 253.5	GND CON 119.2 275.8
			CLNC DEL 119.875 225.4 263.025



ELEV 459	TDZE 439
----------	----------



CATEGORY	A	B	C	D	E
S-ILS 32L **	639/24 200 (200-1/2)				
S-LOC 32L	920/24 481 (500-1/2)	920/50 481 (500-1)			
<input checked="" type="checkbox"/> CIRCLING	1000-1 541 (600-1)	1080-1 621 (700-1)	1240-2 1/4 781 (800-2 1/4)	1240-2 1/2 781 (800-2 1/2)	1240-2 3/4 781 (800-2 3/4)

EC-3, 25 FEB 2021 to 25 MAR 2021

EC-3, 25 FEB 2021 to 25 MAR 2021