

GATEWAY ONE DEPARTURE

AL-46 (FAA)

SCOTT AFB/MIDAMERICA (B.L.V)
BELLEVILLE, ILLINOIS

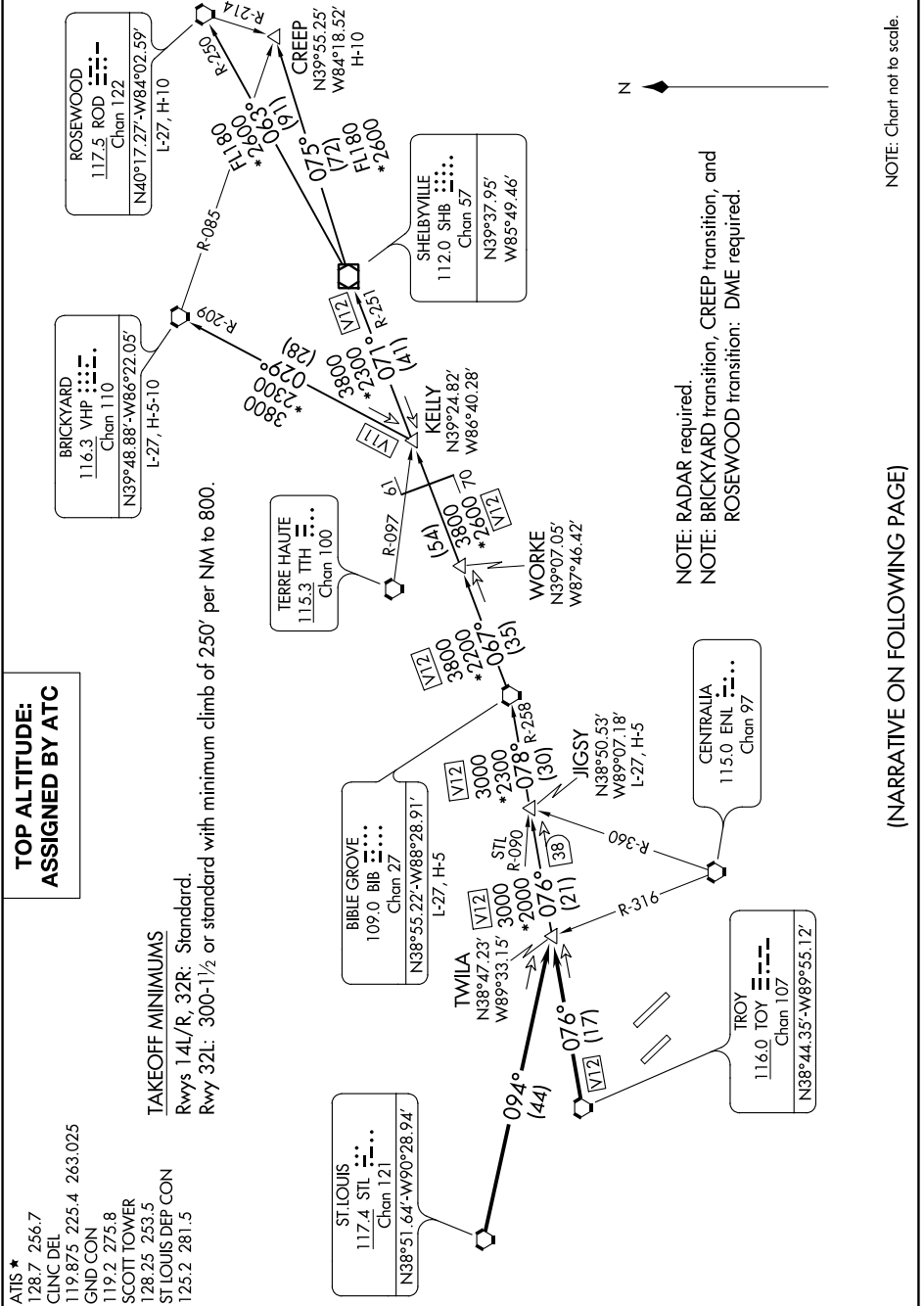
EC-3, 25 FEB 2021 to 25 MAR 2021

TOP ALTITUDE: ASSIGNED BY ATC

ATIS *
128.7 256.7
CLNC DEL
119.875 225.4 263.025
GND CON
119.2 275.8
SCOTT TOWER
128.25 253.5
ST LOUIS DEP CON
125.2 281.5

TAKEOFF MINIMUMS

Rwys 14L/R, 32R: Standard.
Rwy 32L: 300-1/2 or standard with minimum climb of 250' per NM to 800.



NOTE: RADAR required.
NOTE: BRICKYARD transition, CREEP transition, and ROSEWOOD transition: DME required.

NOTE: Chart not to scale.

(NARRATIVE ON FOLLOWING PAGE)

EC-3, 25 FEB 2021 to 25 MAR 2021