

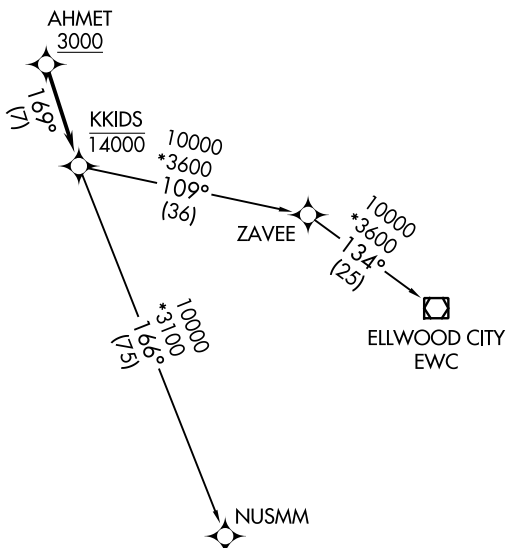
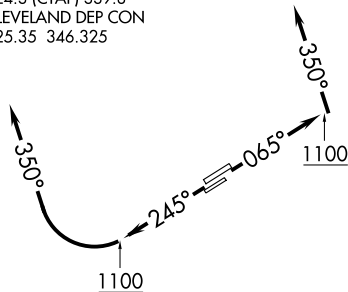
AHMET FOUR DEPARTURE (RNAV)

**TOP ALTITUDE:
ASSIGNED BY ATC**

ATIS
125.25
CLNC DEL
339.8
121.9 (when tower closed)
GND CON
121.9 339.8
LAKEFRONT TOWER ★
124.3 (CTAF) 339.8
CLEVELAND DEP CON
125.35 346.325

TAKEOFF MINIMUMS:

Rwys 6L/R, 24R: Standard with minimum climb of 500' per NM to 1100.
Rwy 24L: 400-1³/₈ or standard with minimum climb of 757' per NM to 1000.



NOTE: RNAV 1.
NOTE: RADAR required.
NOTE: DME/DME/IRU or GPS required.

NOTE: Chart not to scale.

DEPARTURE ROUTE DESCRIPTION

TAKEOFF RUNWAYS 6L/R: Climb on heading 065° to 1100, then on heading 350° or as assigned by ATC, maintain 2000 (do not climb above 2000) for RADAR vectors to cross AHMET at or above 3000, thence....

TAKEOFF RUNWAYS 24L/R: Climb on heading 245° to 1100, then right turn to heading 350° or as assigned by ATC, maintain 2000 (do not climb above 2000) for RADAR vectors to cross AHMET at or above 3000, thence....

....on track 169° to cross KKIDS at or below 14000, then on (transition).
Maintain altitude assigned by ATC, expect filed altitude ten minutes after departure.

ELLWOOD CITY TRANSITION (AHMET4.EWC)
NUSMM TRANSITION (AHMET4.NUSMM)