

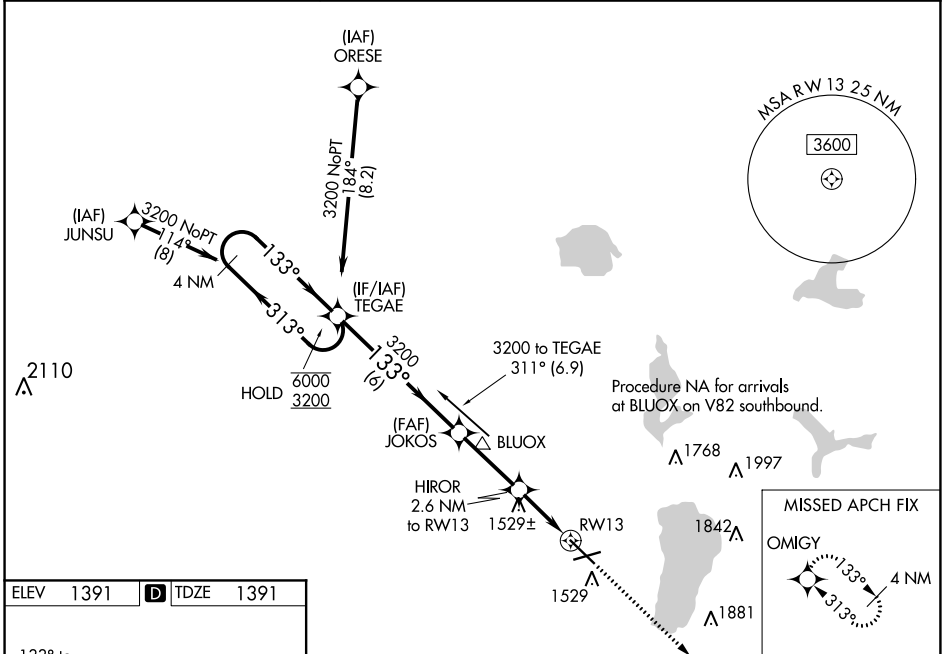
WAAS CH <b>93636</b> <b>W13A</b>	APP CRS <b>133°</b>	Rwy Idg TDZE Apt Elev	<b>7002</b> <b>1391</b> <b>1391</b>
--	------------------------	-----------------------------	---

# RNAV (GPS) RWY 13

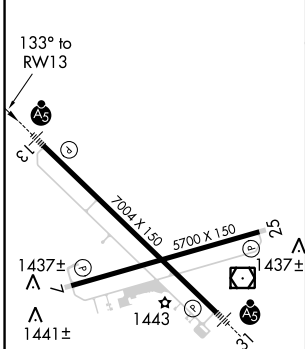
BEMIDJI RGNL (BJI)

RNP APCH.	MALS R	MISSED APPROACH: Climb to 3200 direct OMIGY and hold.
<p>For uncompensated Baro-VNAV systems, LNAV/VNAV NA below -17°C or above 54°C. For inop ALS increase LNAV/VNAV visibility all Cats to 3/4 SM, increase LNAV Cats A and B visibility to 1 SM and Cats C and D visibility to 1/2 SM.</p>		

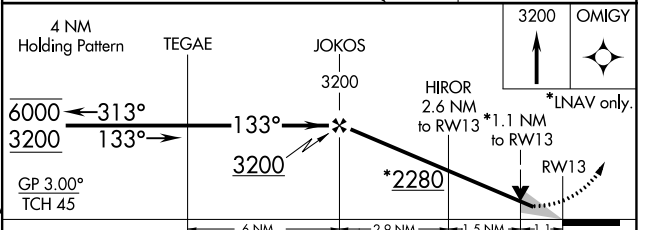
AWOS-3 <b>119.275</b>	MINNEAPOLIS CENTER <b>134.75 251.1</b>	UNICOM <b>122.8 (CTAF) 0</b>
--------------------------	---	---------------------------------



ELEV 1391	<b>D</b> TDZE 1391
-----------	--------------------



HIRL Rwy 13-31   
MIRL Rwy 7-25   
REIL Rwy 7 and 25



CATEGORY	A	B	C	D
LPV DA		1648-3/4	257 (300-3/4)	
LNAV/VNAV DA		1680-3/4	289 (300-3/4)	
LNAV MDA		1780-3/4	389 (400-3/4)	
<b>C</b> CIRCLING	1840-1 449 (500-1)	1860-1 469 (500-1)	1860-1 1/2 469 (500-1 1/2)	1960-2 569 (600-2)

NC-1, 25 FEB 2021 to 25 MAR 2021

NC-1, 25 FEB 2021 to 25 MAR 2021