

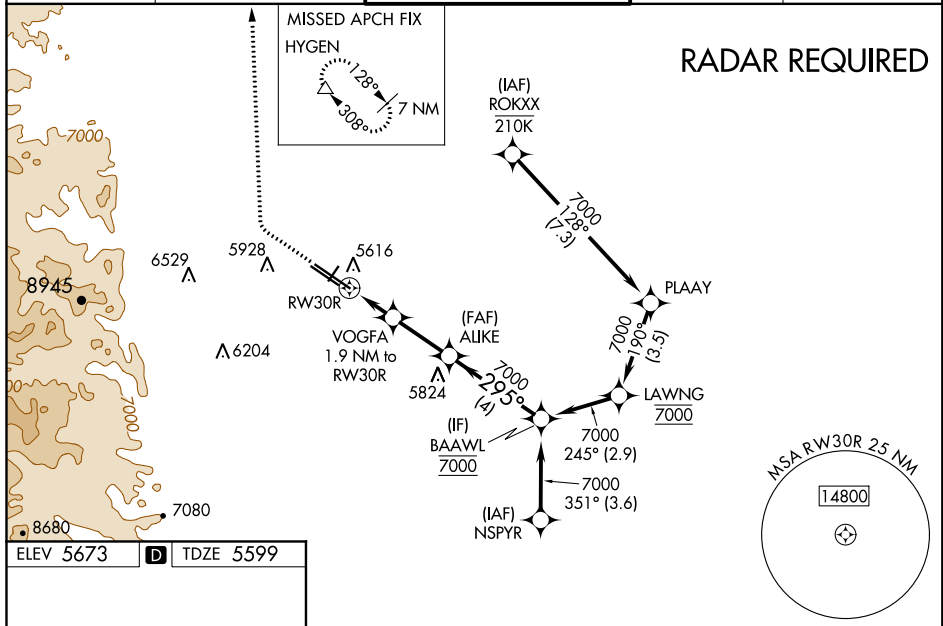
WAAS CH 82707 W30B	APP CRS 295°	Rwy Idg TDZE 9000 5599 Apt Elev 5673
--	------------------------	--

RNAV (GPS) RWY 30R
ROCKY MOUNTAIN METROPOLITAN (B.J.C)

NA Baro-VNAV and VDP NA when using Denver Intl altimeter setting. For uncompensated Baro-VNAV systems, LNAV/VNAV NA below -26°C (-14°F) or above 47°C (116°F). DME/DME RNP-0.3 NA. When local altimeter setting not received, use Denver Intl altimeter setting and increase all DA 82 feet and all MDA 100 feet, increase LNAV/VNAV all Cats, LNAV Cat C/D and Circling Cat C visibility ½ mile. For inoperative MALSR, increase LNAV/VNAV all Cats visibility to 1 ½ mile and LNAV Cat C/D visibility to 1 mile. For inoperative MALSR, when using Denver Intl altimeter setting, increase LPV all Cats visibility to 1 mile, LNAV/VNAV all Cats visibility to 1 ½ mile and LNAV Cat A/B visibility to 1 mile and Cat C/D visibility to 1 ½ mile.

MALSR
A5
MISSED APPROACH: Climb to 6300 then climbing right turn to 10300 direct HYGEN and hold, continue climb-in-hold to 10300.

ATIS 126.25	DENVER APP CON 126.1 360.75	METRO TOWER ★ 118.6 (CTAF) 233.7	GND CON 121.7	CLNC DEL 132.6
-----------------------	---------------------------------------	--	-------------------------	--------------------------



ELEV 5673	D	TDZE 5599
<p>13.10% DOWN 2000 X 100 7002 X 7.3 1.7% UP 1.1% UP 30R 295° to RW30R</p>		
<p>HIRL Rwy's 12L-30R MIRL Rwy's 3-21 and 12R-30L REIL Rwy's 12L, 12R and 30L</p>		

6300	10300	HYGEN	ALIJE	BAAWL
↑	↩	△	7000	7000
* LNAV only.		VOGFA 1.9 NM to RW30R	7000	7000
RW30R		* 1 NM to RW30R	295°	7000
6220*		7000		GP 3.00° TCH 52
-1 NM		-0.9	2.4 NM	4 NM
CATEGORY	A	B	C	D
LPV DA		5799-½	200 (200-½)	
LNAV/VNAV DA		5900-⅝	301 (300-⅝)	
LNAV MDA	5940-½	341 (300-½)	5940-⅝	341 (300-⅝)
CIRCLING	6180-1 507 (600-1)	6240-1 567 (600-1)	6360-2 687 (700-2)	6860-3 1187 (1200-3)